

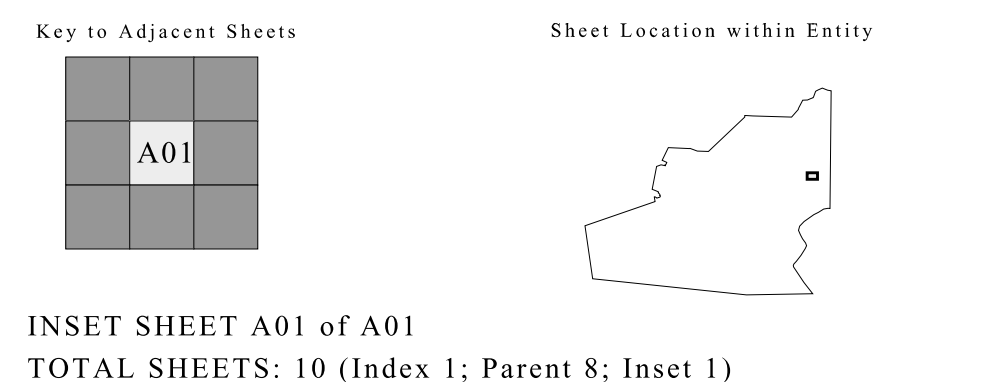
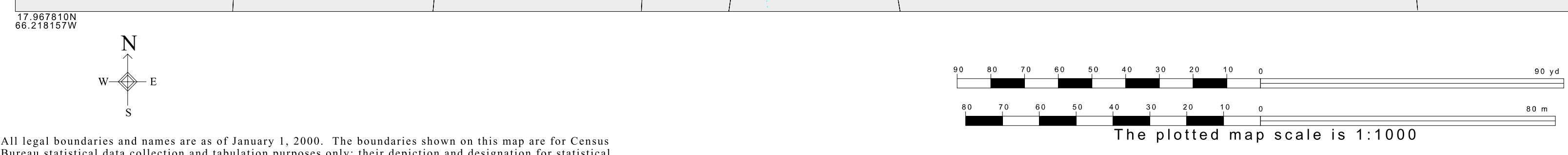
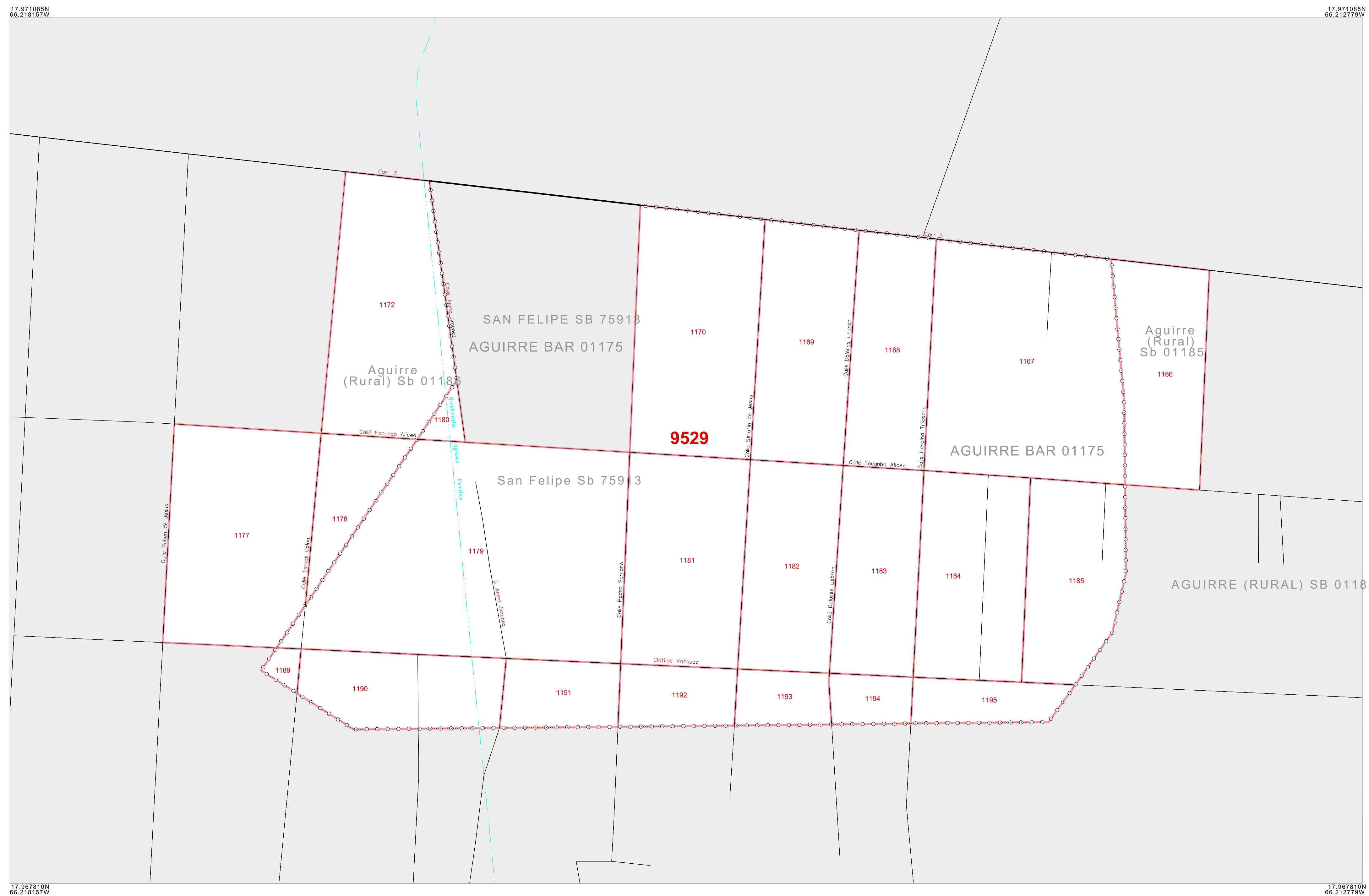
CENSUS 2000 BLOCK MAP: AGUIRRE Barrio

LEGEND

SYMBOL	NAME STYLE
*****	INTERNATIONAL
///////	PUERTO RICO
■■■■■	MUNICIPIO
●●●●●	BARRIO / BARRIO-PUEBLO
○●●●○	Subbarrio
Place within Subject Entity	Comunidad / Zona Urbana
Place outside of Subject Entity	Comunidad / Zona Urbana
—————	Census Tract
	CENSUS BLOCK ¹

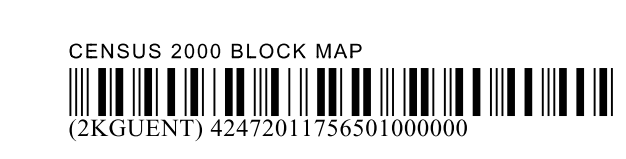
FEATURES		
Highway	Pipe/Pipe Line	Stream/Shoreline
Secondary Road	Ridge/Physical Feature	Intermittent Stream
Deep Inlet/Passage/Ferry	Property/Fence Line	River / Lake
Railroad	Nonvisible Boundary	

Where international, state, and/or county boundaries coincide, the map shows the boundary symbol for only the highest-ranking of these boundaries.
¹ A "*" following a block number indicates that the block number is repeated elsewhere in the block.



INSET SHEET A01 of A01
 TOTAL SHEETS: 10 (Index 1; Parent 8; Inset 1)

ENTITY TYPE: Barrio
 NAME: Aguirre barrio (01175)
 ST: Puerto Rico (72)
 CO: Salinas Municipio (123)



All legal boundaries and names are as of January 1, 2000. The boundaries shown on this map are for Census Bureau statistical data collection and tabulation purposes only; their depiction and designation for statistical purposes does not constitute a determination of jurisdictional authority or rights of ownership or entitlement. Source: U.S. Census Bureau's TIGER database (Census 2000). Projection: State-based Albers Equal Area. U.S. DEPARTMENT OF COMMERCE Economics and Statistics Administration U.S. Census Bureau