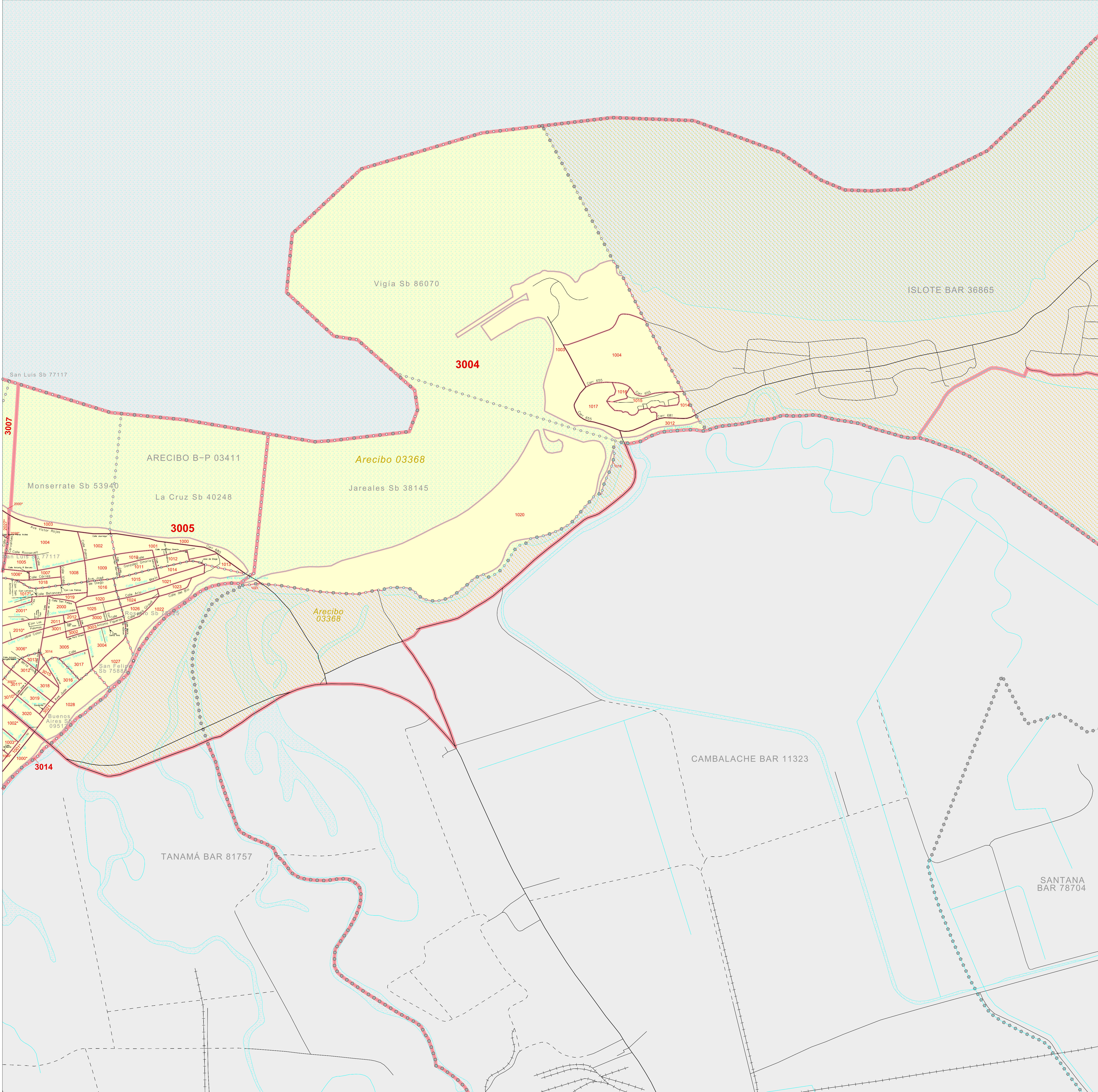


CENSUS 2000 BLOCK MAP: ARECIBO Barrio-Pueblo

18 491830N
66 719465W

18 491830N
66 680437W



LEGEND

| SYMBOL | NAME STYLE |
|-----------------|---|
| ☆☆☆☆ | INTERNATIONAL |
| //// | PUERTO RICO |
| □□□□ | MUNICIPIO |
| ●●●● | BARRIO / BARRIO-PUEBLO |
| ○●●○ | Subbarrio |
| Yellow fill | Place within Subject Entity <i>Comunidad / Zona Urbana</i> |
| Light blue fill | Place outside of Subject Entity <i>Comunidad / Zona Urbana</i> |
| Red outline | Census Tract CENSUS BLOCK ¹ |

FEATURES

| | | |
|-----------------------|------------------------|---------------------|
| Highway | Pipe/Pipe Line | Stream/Shoreline |
| Secondary Road | Ridge/Physical Feature | Intermittent Stream |
| See Inset/Inset/Inset | Property/Fence Line | River / Lake |
| Railroad | Nonvisible Boundary | |

Metadata
 Inset
 Out Area

Where international, state, and/or county boundaries coincide, the map shows the boundary symbol for only the highest-ranking of these boundaries.
 1 A " following a block number indicates that the block number is repeated elsewhere in the block.

Key to Adjacent Sheets

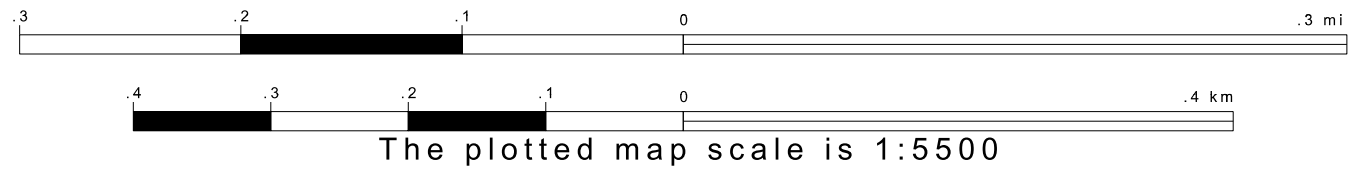
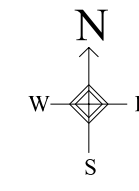
| | |
|---|---|
| 1 | 2 |
|---|---|

Sheet Location within Entity

SHEET 2 OF 2 PARENT SHEETS
TOTAL SHEETS: 3 (Index 1; Parent 2; Inset 0)

18 255020N
66 719465W

18 255020N
66 680437W



All legal boundaries and names are as of January 1, 2000. The boundaries shown on this map are for Census Bureau statistical data collection and tabulation purposes only; their depiction and designation for statistical purposes does not constitute a determination of jurisdictional authority or rights of ownership or entitlement. Source: U.S. Census Bureau's TIGER database (Census 2000) Projection: State-based Albers' Equal Area U.S. DEPARTMENT OF COMMERCE Economics and Statistics Administration U.S. Census Bureau

ENTITY TYPE: Barrio-Pueblo
NAME: Arecibo barrio-pueblo (03411)
ST: Puerto Rico (72)
CO: Arecibo Municipio (013)

