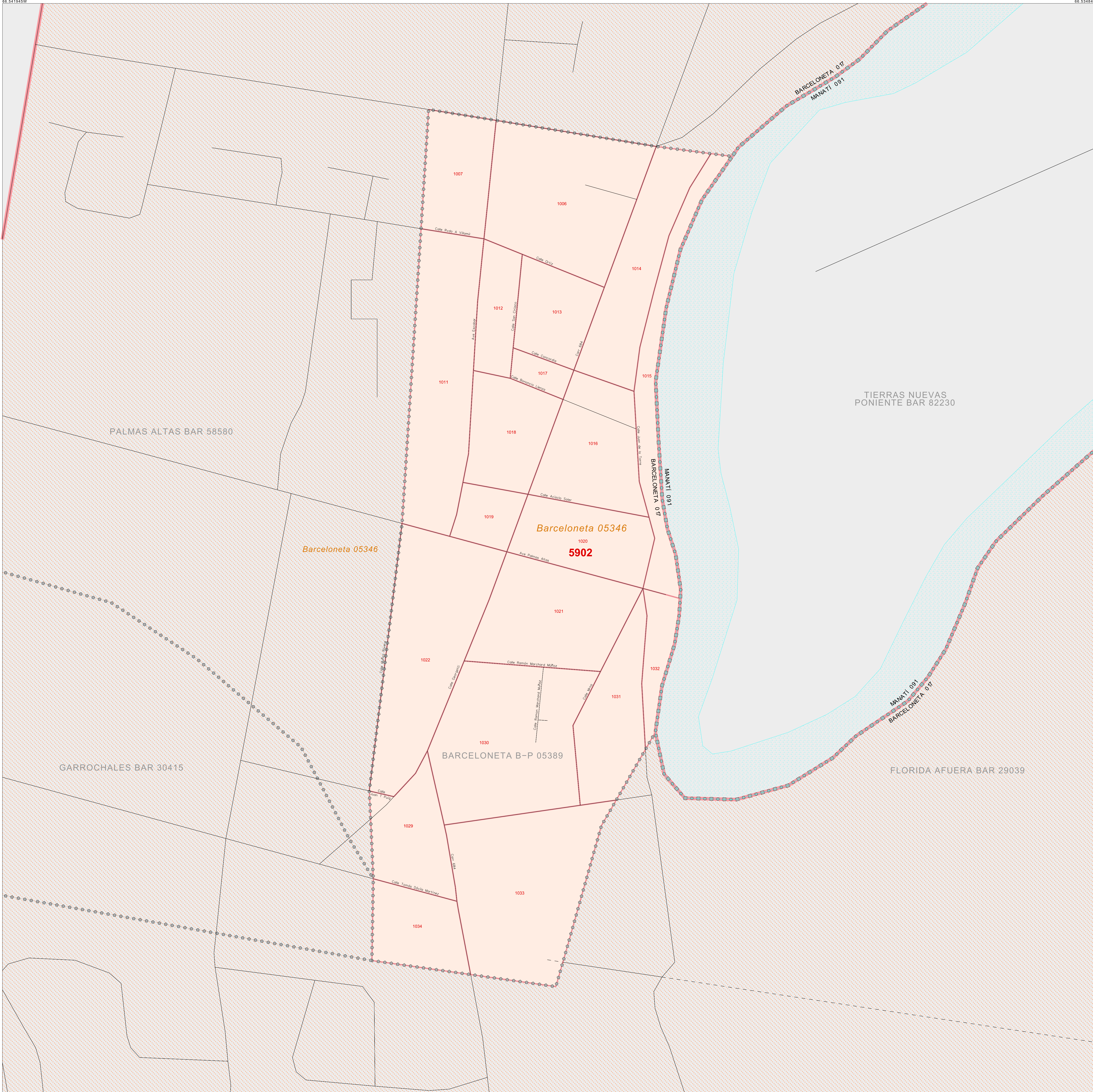


CENSUS 2000 BLOCK MAP: BARCELONETA Barrio-Pueblo

18 457884N
66 541945W

18 457884N
66 534849W



LEGEND

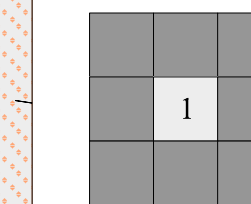
| SYMBOL | NAME STYLE |
|--------------|---|
| ***** | INTERNATIONAL |
| | PUERTO RICO |
| □□□□□ | MUNICIPIO |
| ●●●●● | BARRIO / BARRIO-PUEBLO |
| ○ ○ ○ ○ ○ | Subbarrio |
| Color swatch | Place within Subject Entity <i>Comunidad / Zona Urbana</i> |
| Color swatch | Place outside of Subject Entity <i>Comunidad / Zona Urbana</i> |
| Red outline | Census Tract CENSUS BLOCK ¹ |

FEATURES

| | | |
|-----------------------|------------------------|---------------------|
| Highway | Pipe/Pipe Line | Stream/Shoreline |
| Secondary Road | Ridge/Physical Feature | Intermittent Stream |
| See Inset/Inset/Ferry | Property/Fence Line | River / Lake |
| Railroad | Nonvisible Boundary | |

Where international, state, and/or county boundaries coincide, the map shows the boundary symbol for only the highest-ranking of these boundaries.
¹ A "*" following a block number indicates that the block number is repeated elsewhere in the block.

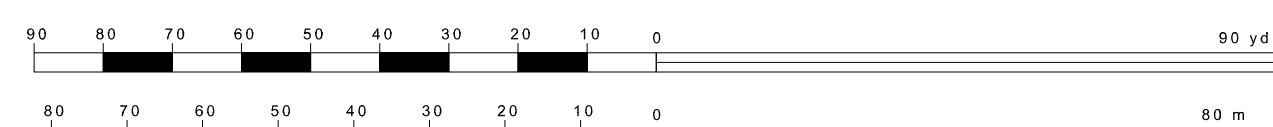
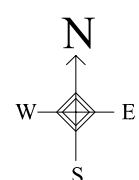
Key to Adjacent Sheets



SHEET 1 OF 1 PARENT SHEET
TOTAL SHEETS: 1 (Index 0; Parent 1; Inset 0)

18 457884N
66 541945W

18 457884N
66 534849W



The plotted map scale is 1:1000

ENTITY TYPE: Barrio-Pueblo
NAME: Barceloneta barrio-pueblo (05389)
ST: Puerto Rico (72)
CO: Barceloneta Municipio (017)



All legal boundaries and names are as of January 1, 2000. The boundaries shown on this map are for Census Bureau statistical data collection and tabulation purposes only; their depiction and designation for statistical purposes does not constitute a determination of jurisdictional authority or rights of ownership or entitlement. Source: U.S. Census Bureau's TIGER database (Census 2000). Projection: State-based Albers Equal Area