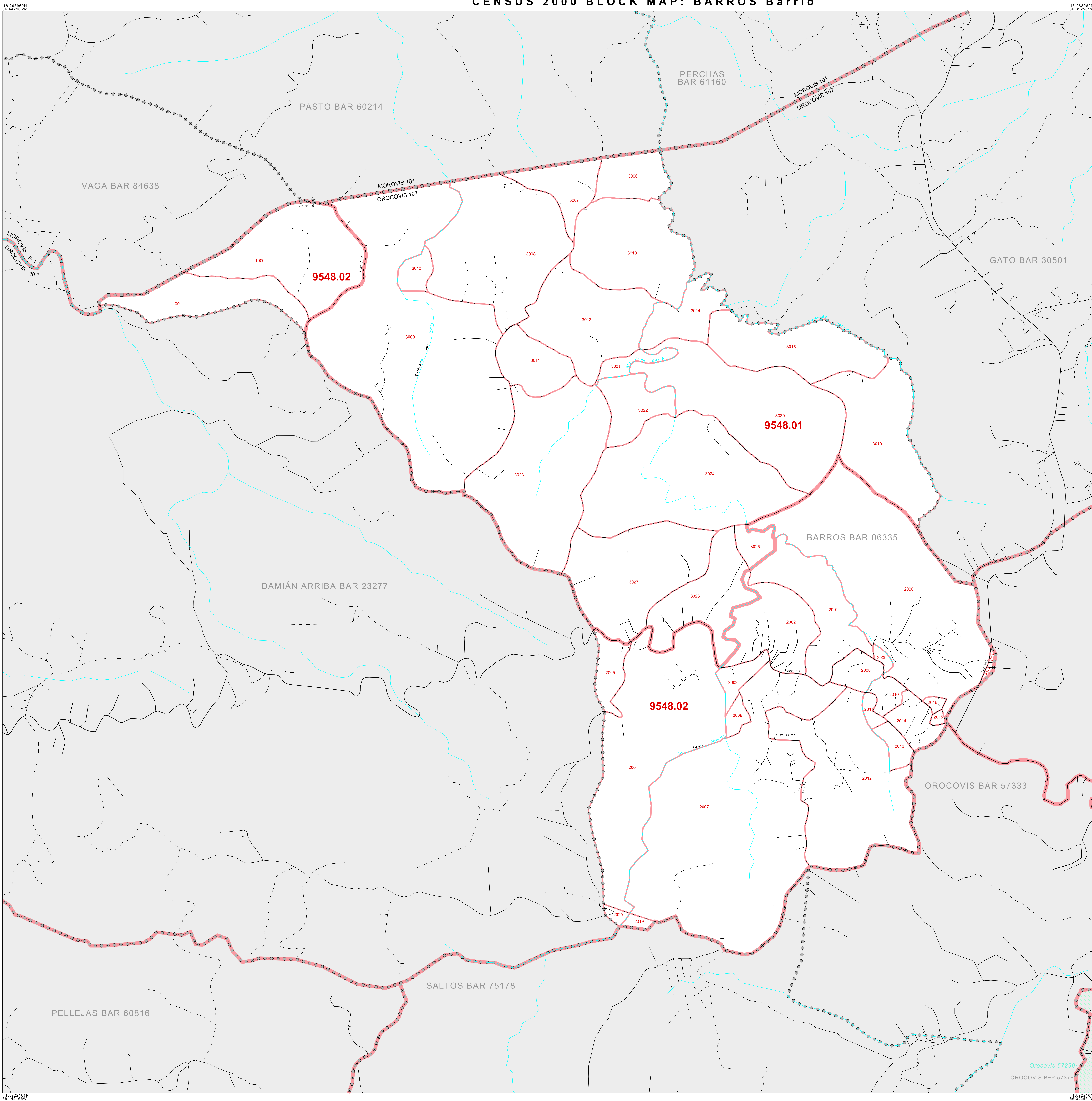


CENSUS 2000 BLOCK MAP: BARROS Barrio



LEGEND

SYMBOL	NAME STYLE
*****	INTERNATIONAL
=====	PUERTO RICO
■ ■ ■ ■ ■	MUNICIPIO
● ● ● ● ●	BARRIO / BARRIO-PUEBLO
○ ○ ○ ○ ○	Subbarrio
■ ■ ■ ■ ■ (Yellow)	Place within Subject Entity <i>Comunidad / Zona Urbana</i>
■ ■ ■ ■ ■ (White)	Place outside of Subject Entity <i>Comunidad / Zona Urbana</i>
■ ■ ■ ■ ■ (Red)	Census Tract
■ ■ ■ ■ ■ (Red)	CENSUS BLOCK ¹

FEATURES

Highway	Pipe/Pipe Line	Stream/Shoreline
Secondary Road	Ridge/Physical Feature	Intermittent Stream
See Trail/Access/Ezery	Property/Fence Line	River / Lake
Railroad	Nonvisible Boundary	

Where international, state, and/or county boundaries coincide, the map shows the boundary symbol for only the highest-ranking of these boundaries.
¹ A "*" following a block number indicates that the block number is repeated elsewhere in the block.

18 26990N
86.42216W

18 23216N
86.39256W

The plotted map scale is 1:7000

18 23216N
86.39256W

Orocovis 57290
OROCOVIS B-P 57378

ENTITY TYPE: Barrio
 NAME: Barros barrio (06335)
 ST: Puerto Rico (72)
 CO: Orocovis Municipio (107)

CENSUS 2000 BLOCK MAP
 (SEQUENT) 4147206350010000000

Key to Adjacent Sheets

1

SHEET 1 OF 1 PARENT SHEET
 TOTAL SHEETS: 1 (Index 0; Parent 1; Inset 0)

All legal boundaries and names are as of January 1, 2000. The boundaries shown on this map are for Census Bureau statistical data collection and tabulation purposes only; their depiction and designation for statistical purposes does not constitute a determination of jurisdictional authority or rights of ownership or entitlement. Source: U.S. Census Bureau's TIGER database (Census 2000). Projection: State-based Albers Equal Area. U.S. DEPARTMENT OF COMMERCE Economics and Statistics Administration U.S. Census Bureau