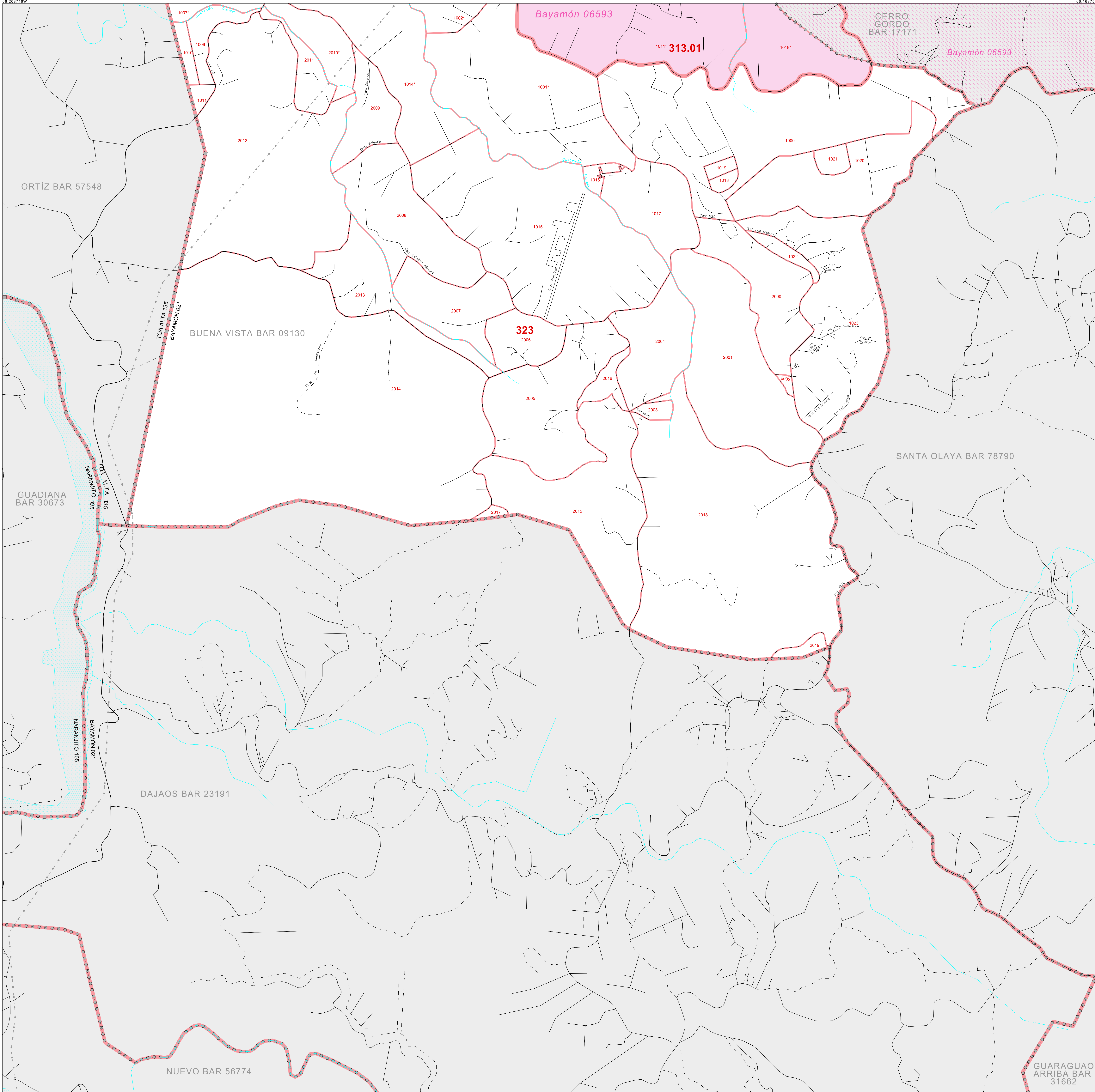


CENSUS 2000 BLOCK MAP: BUENA VISTA Barrio

18 334046N
86 208746W

18 334046N
86 168724W



LEGEND

SYMBOL	NAME STYLE
*****	INTERNATIONAL
//////	PUERTO RICO
■■■■■	MUNICIPIO
●●●●●	BARRIO / BARRIO-PUEBLO
○●○●○	Subbarrio
Color swatches	Place within Subject Entity <i>Comunidad / Zona Urbana</i>
Color swatches	Place outside of Subject Entity <i>Comunidad / Zona Urbana</i>
Red outline	Census Tract
Red outline	CENSUS BLOCK ¹

FEATURES

Highway	Pipe/Pipe Line	Stream/Shoreline
Secondary Road	Ridge/Physical Feature	Intermittent Stream
See Trail/Passway/Ferry	Property/Fence Line	River / Lake
Railroad	Nonvisible Boundary	

Where international, state, and/or county boundaries coincide, the map shows the boundary symbol for only the highest-ranking of these boundaries.
¹ A "*" following a block number indicates that the block number is repeated elsewhere in the block.

Key to Adjacent Sheets

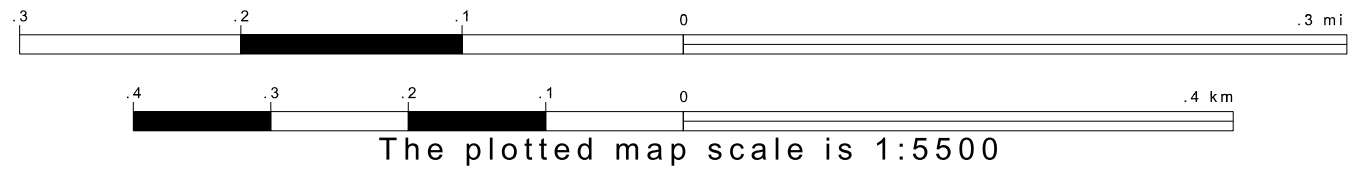
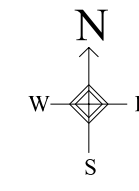
1	2
---	---

Sheet Location within Entity

SHEET 2 OF 2 PARENT SHEETS
TOTAL SHEETS: 3 (Index 1; Parent 2; Inset 0)

18 207235N
86 208746W

18 207235N
86 168724W



All legal boundaries and names are as of January 1, 2000. The boundaries shown on this map are for Census Bureau statistical data collection and tabulation purposes only; their depiction and designation for statistical purposes does not constitute a determination of jurisdictional authority or rights of ownership or entitlement. Source: U.S. Census Bureau's TIGER database (Census 2000). Projection: State-based Albers's Equal Area. U.S. DEPARTMENT OF COMMERCE Economics and Statistics Administration U.S. Census Bureau

ENTITY TYPE: Barrio
NAME: Buena Vista barrio (09130)
ST: Puerto Rico (72)
CO: Bayamón Municipio (021)

