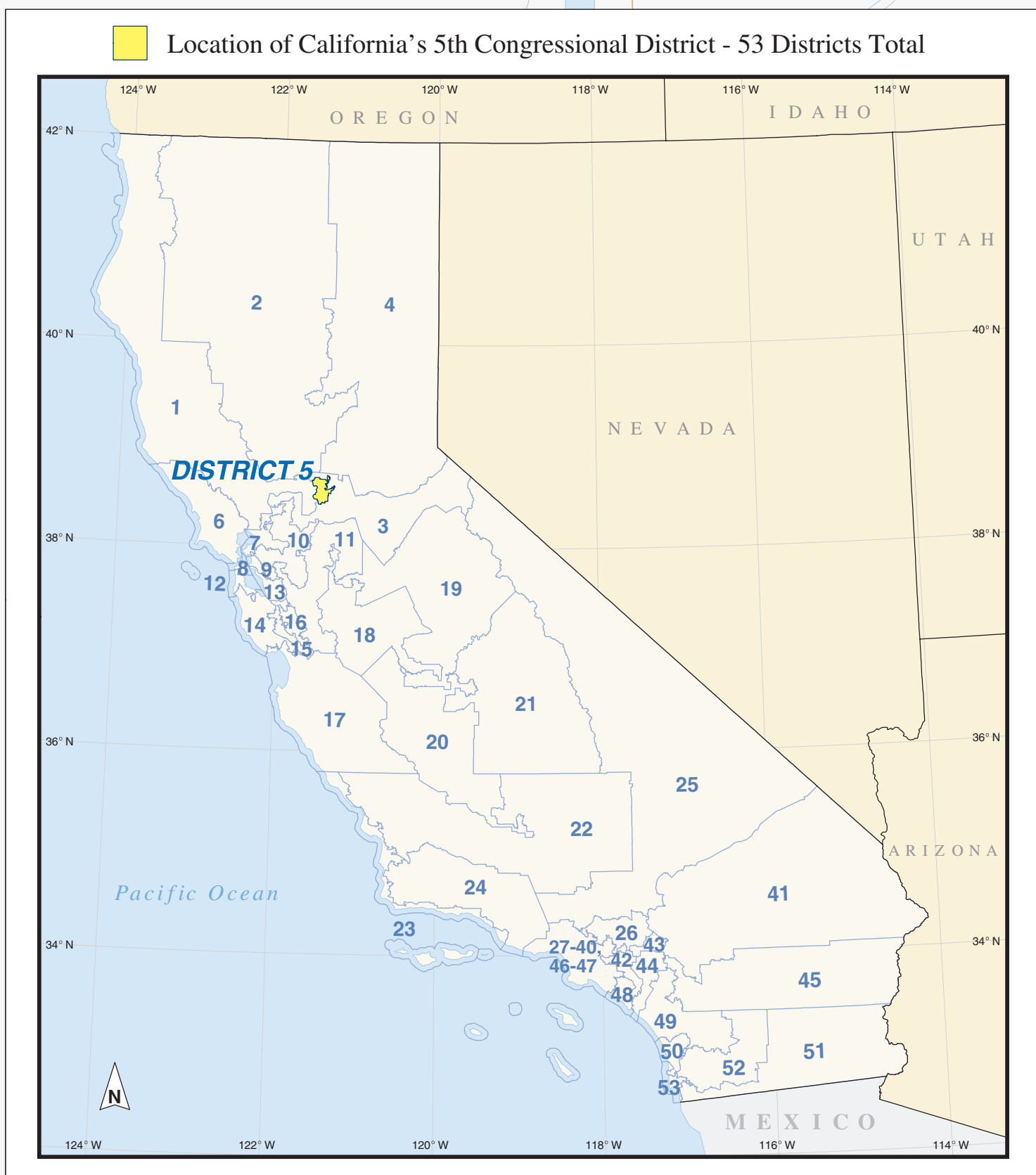
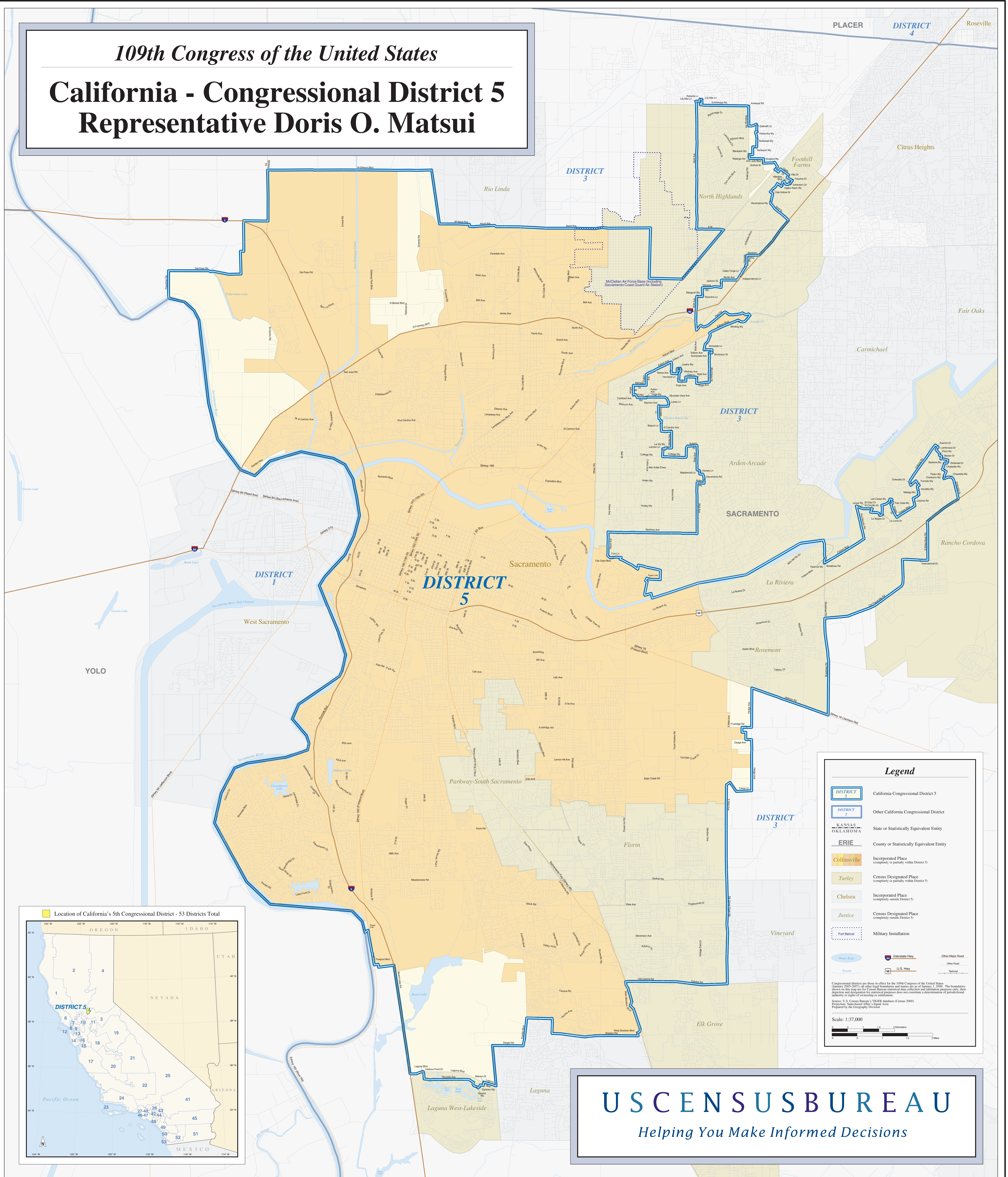


109th Congress of the United States

California - Congressional District 5 Representative Doris O. Matsui



Legend

- DISTRICT 5** California Congressional District 5
- DISTRICT 3** Other California Congressional District
- KANSAS OKLAHOMA** State or Statistically Equivalent Entity
- ERIE** County or Statistically Equivalent Entity
- Collinsville** Incorporated Place (completely or partially within District 5)
- Turley** Census Designated Place (completely or partially within District 5)
- Chelsea** Incorporated Place (completely outside District 5)
- Justice** Census Designated Place (completely outside District 5)
- Fort Belvoir** Military Installation
- Water Body** Interstate Hwy, Other Major Road, Other Road, U.S. Hwy, Railroad
- Stream** Railroad

Congressional districts are those in effect for the 109th Congress of the United States (January 2005-2007); all other legal boundaries and names are as of January 1, 2000. The boundaries shown on this map are for Census Bureau statistical data collection and tabulating purposes only; their accuracy and interpretation for statistical purposes does not constitute a determination of jurisdictional authority or rights of ownership or control.

Source: U.S. Census Bureau's TIGER database (Census 2000) Projection: Statewide Other: Equal Area Prepared by the Geography Division

Scale: 1:37,000

USCENSUS BUREAU
Helping You Make Informed Decisions