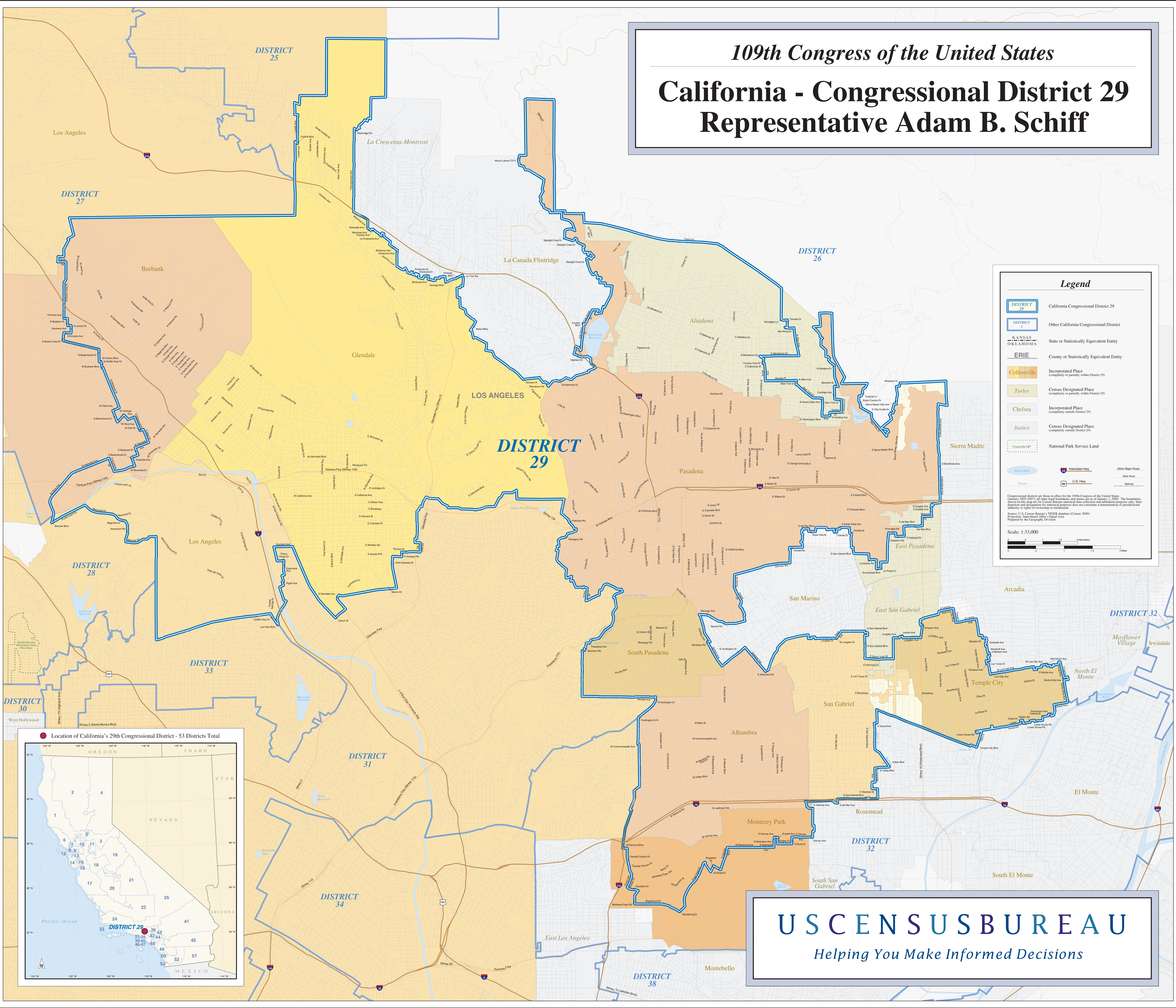


109th Congress of the United States
California - Congressional District 29
Representative Adam B. Schiff

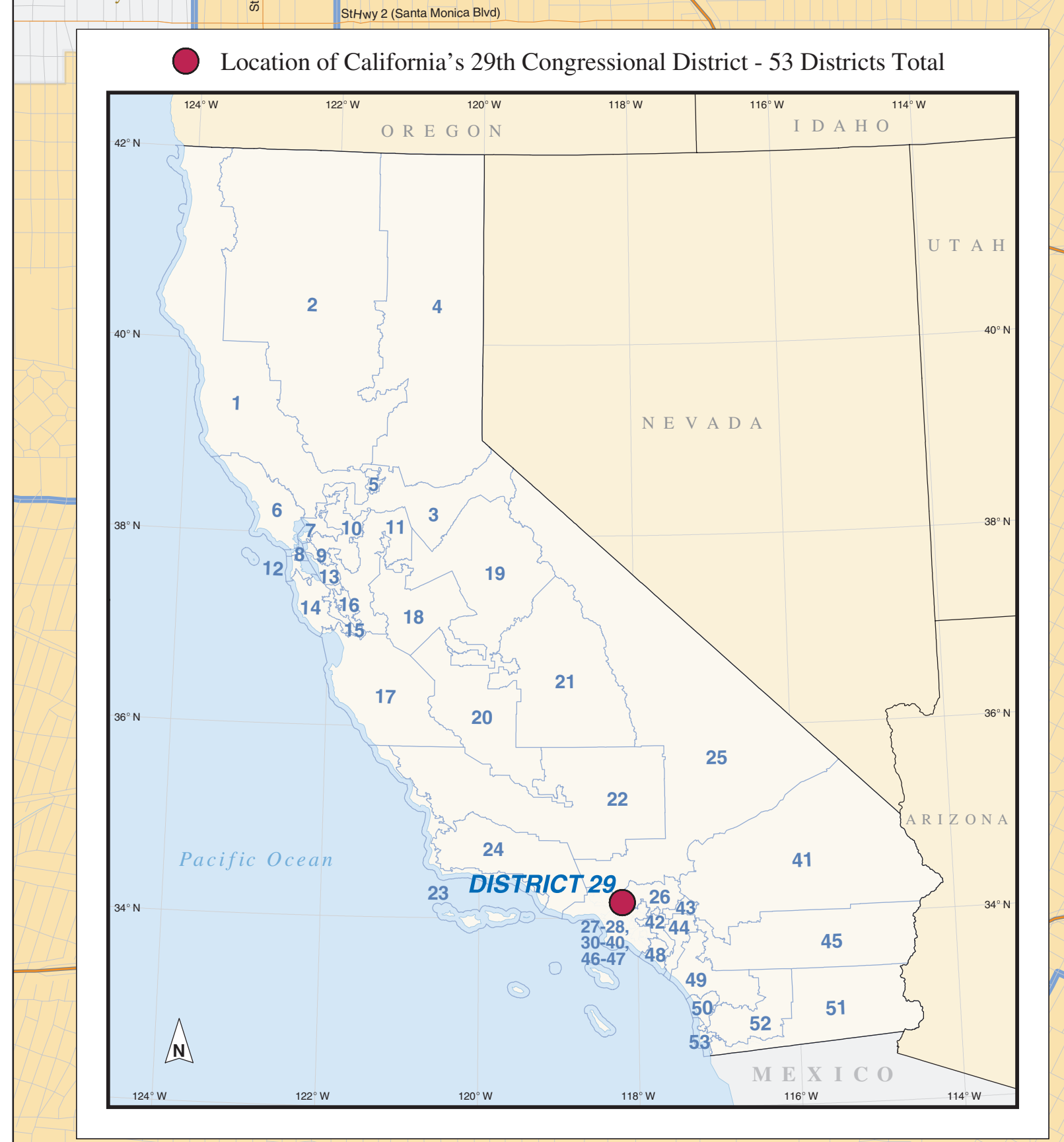


Legend

- DISTRICT 29 California Congressional District 29
- DISTRICT 2 Other California Congressional District
- KANSAS OKLAHOMA State or Statistically Equivalent Entity
- ERIE County or Statistically Equivalent Entity
- Collinsville Incorporated Place (completely or partially within District 29)
- Turley Census Designated Place (completely or partially outside District 29)
- Chelsea Incorporated Place (completely outside District 29)
- Justice Census Designated Place (completely outside District 29)
- National Park Service Land
- Water Body Water Body
- Stream Stream
- Interstate Hwy Interstate Hwy
- U.S. Hwy U.S. Hwy
- Other Major Road Other Major Road
- Railroad Railroad

Congressional districts are those in effect for the 109th Congress of the United States (January 2005-2007); all other legal boundaries and names are as of January 1, 2000. The boundaries shown on this map are for Census Bureau statistical data collection and tabulation purposes only; they do not represent or determine the political jurisdiction of any state or local government. Source: U.S. Census Bureau's TIGER database (Census 2000) Prepared by the Geography Division

Scale: 1:33,000



USCENSUSBUREAU
Helping You Make Informed Decisions