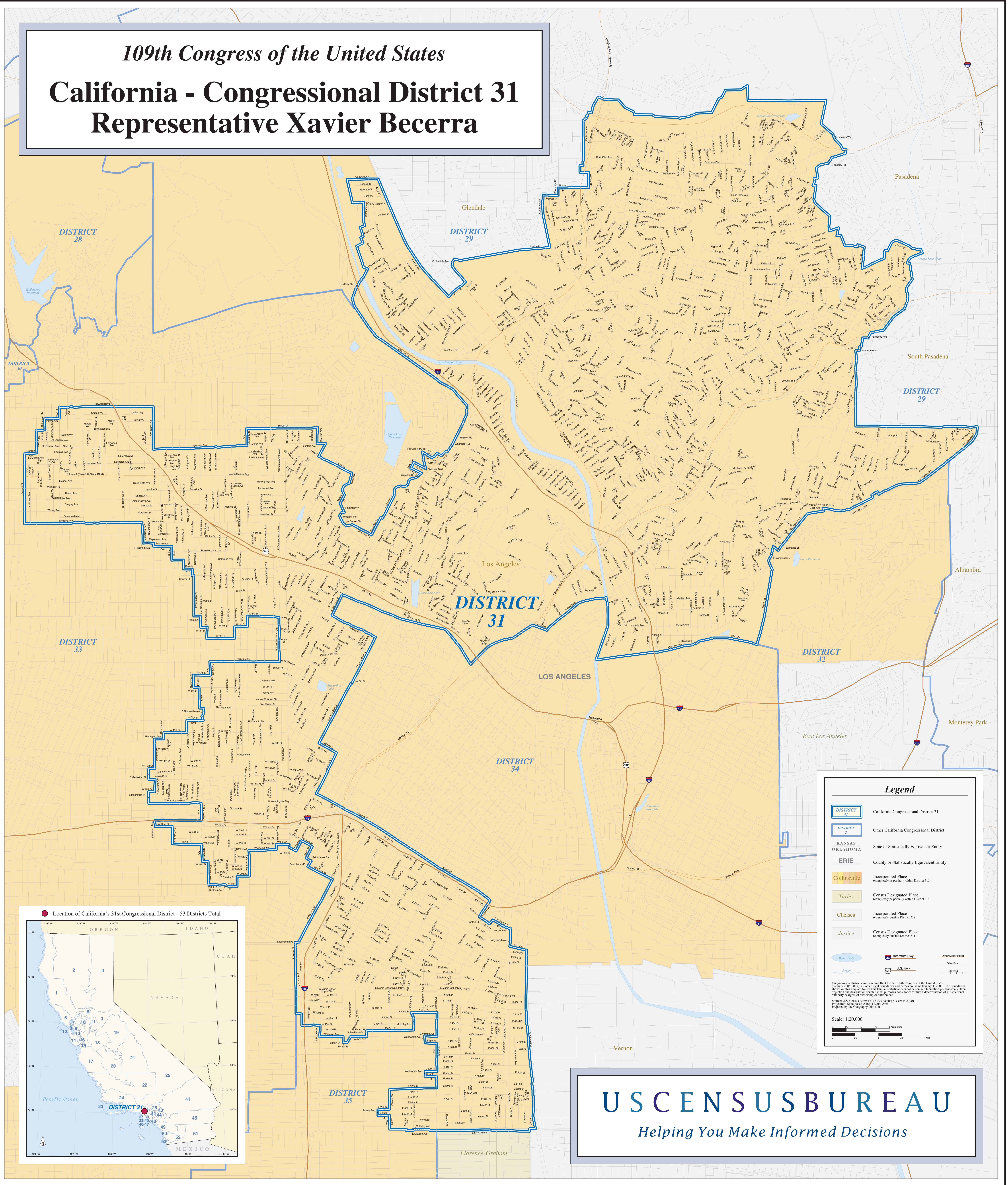


109th Congress of the United States

California - Congressional District 31
Representative Xavier Becerra



Legend

- DISTRICT 31** California Congressional District 31
- DISTRICT 2** Other California Congressional District
- KANSAS OKLAHOMA** State or Statistically Equivalent Entity
- ERIE** County or Statistically Equivalent Entity
- Collinsville** Incorporated Place (completely or partially within District 31)
- Turley** Census Designated Place (completely or partially within District 31)
- Chelsea** Incorporated Place (completely outside District 31)
- Justice** Census Designated Place (completely outside District 31)
- Water Body** Water Body
- Stream** Stream
- Interstate Hwy** Interstate Highway
- U.S. Hwy** U.S. Highway
- Other Major Road** Other Major Road
- Other Road** Other Road
- Railroad** Railroad

Congressional districts are those in effect for the 109th Congress of the United States (January 2005-2007); all other legal boundaries and names are as of January 1, 2000. The boundaries shown on this map are for Census Bureau statistical data collection and tabulation purposes only; their accuracy and suitability for statistical purposes does not constitute a determination of jurisdictional authority or rights of ownership or control.

Source: U.S. Census Bureau's TIGER database (Census 2000) Projection: Statewide Other Equal Area Prepared by the Geography Division

Scale: 1:20,000



USCENSUSBUREAU
Helping You Make Informed Decisions