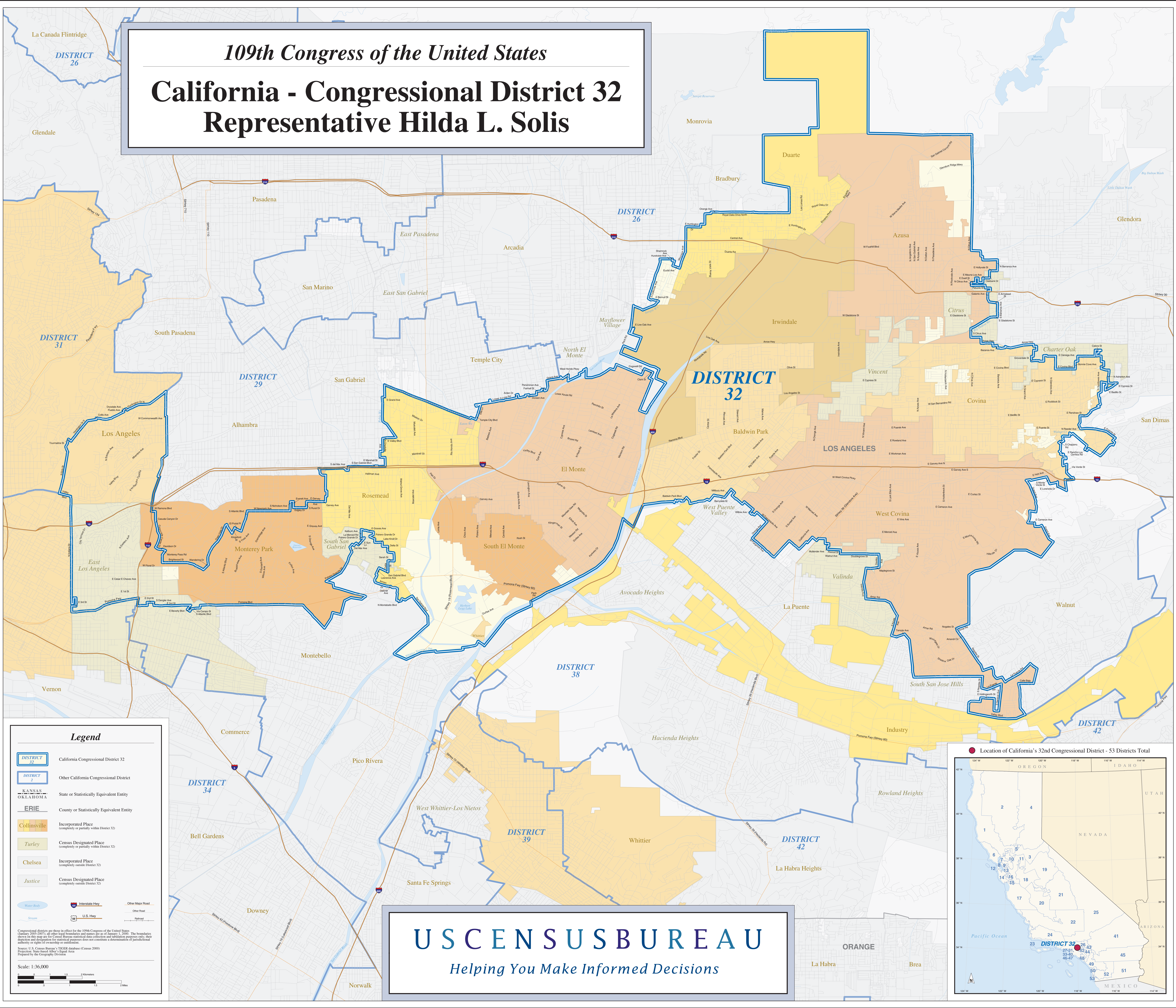


109th Congress of the United States
California - Congressional District 32
Representative Hilda L. Solis



Legend

- DISTRICT 32 California Congressional District 32
- DISTRICT 2 Other California Congressional District
- KANSAS OKLAHOMA State or Statistically Equivalent Entity
- ERIE County or Statistically Equivalent Entity
- Collinsville Incorporated Place (completely or partially within District 32)
- Turley Census Designated Place (completely or partially within District 32)
- Chelsea Incorporated Place (completely outside District 32)
- Justice Census Designated Place (completely outside District 32)
- Water Body
- Interstate Hwy
- U.S. Hwy
- Other Major Road
- Other Road
- Railroad

Congressional districts are those in effect for the 109th Congress of the United States (January 2005-2007), unless noted. Boundaries are based on the 2000 Census. The boundaries shown on this map are for Census Bureau statistical data collection and tabulation purposes only; their definition and description for statistical purposes does not constitute a determination of jurisdictional authority or rights of ownership or entitlement.

Source: U.S. Census Bureau's 2000 Census of Population and Housing (Census 2000) Projected, State-level, Equal Area

Prepared by the Geography Division

Scale: 1:36,000

USCENSUSBUREAU
Helping You Make Informed Decisions

