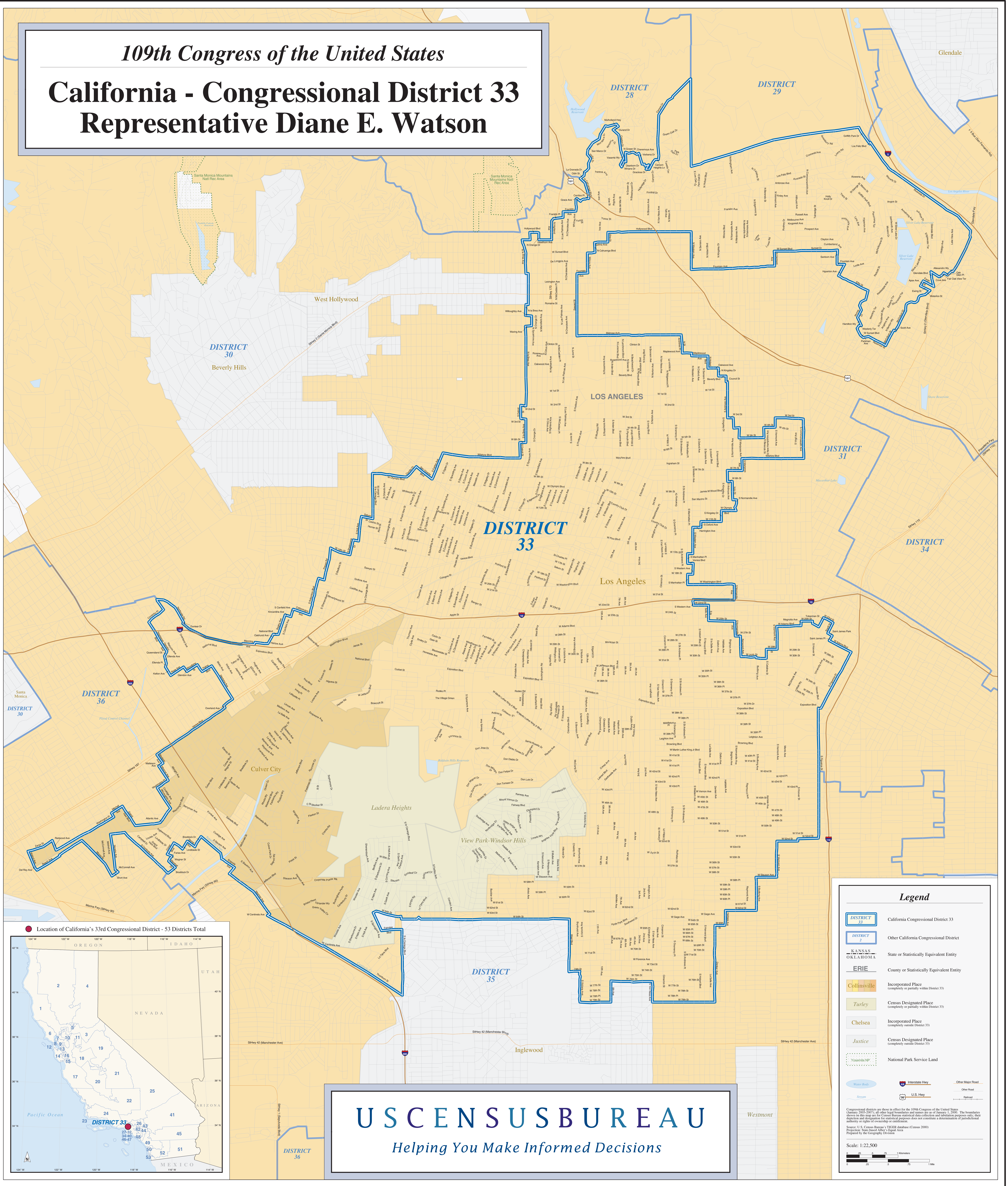


109th Congress of the United States

California - Congressional District 33 Representative Diane E. Watson



Legend

- DISTRICT 33** California Congressional District 33
- DISTRICT 2** Other California Congressional District
- KANSAS OKLAHOMA** State or Statistically Equivalent Entity
- ERIE** County or Statistically Equivalent Entity
- Collinsville** Incorporated Place (completely or partially within District 33)
- Turley** Census Designated Place (completely or partially within District 33)
- Chelsea** Incorporated Place (completely outside District 33)
- Justice** Census Designated Place (completely outside District 33)
- Yosemite NP** National Park Service Land
- Water Body** Water Body
- Stream** Stream
- Interstate Hwy** Interstate Highway
- U.S. Hwy** U.S. Highway
- Other Major Road** Other Major Road
- Other Road** Other Road
- Railroad** Railroad

USCENSUSBUREAU

Helping You Make Informed Decisions

Congressional districts are those in effect for the 109th Congress of the United States (January 2005-2007); all other legal boundaries and names are as of January 1, 2000. The boundaries shown on this map are for Census Bureau statistical data collection and tabulation purposes only. They do not constitute a determination of jurisdictional authority or rights of ownership or control.
Source: U.S. Census Bureau's TIGER database (Census 2000) Projected State/County/Tract Level Areas
Prepared by the Geography Division

Scale: 1:22,500

