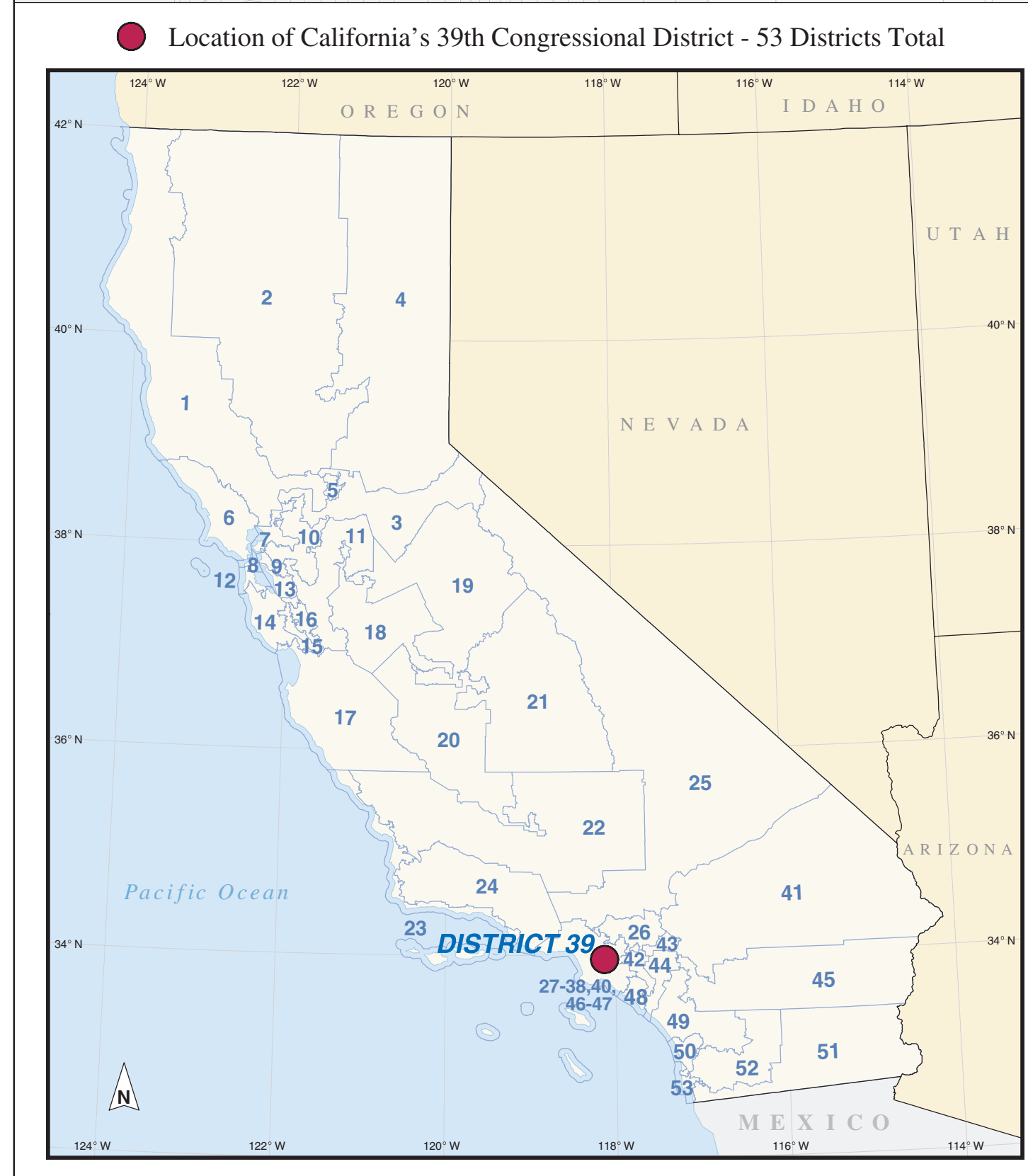
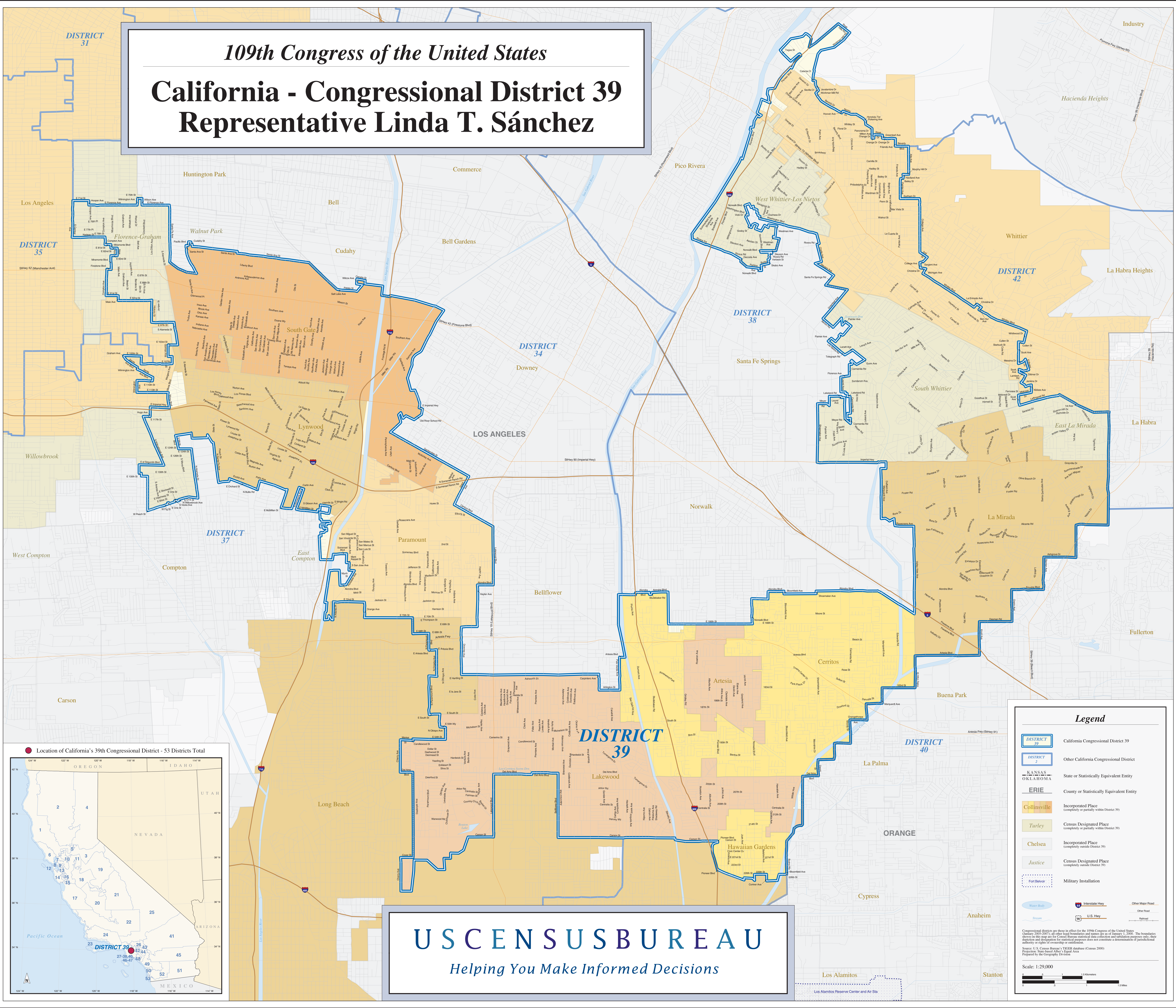


109th Congress of the United States
California - Congressional District 39
Representative Linda T. Sánchez



Legend

- DISTRICT 39 California Congressional District 39
- DISTRICT 2 Other California Congressional District
- KANSAS OKLAHOMA State or Statistically Equivalent Entity
- ERIE County or Statistically Equivalent Entity
- Collinsville Incorporated Place (completely or partially within District 39)
- Turley Census Designated Place (completely or partially within District 39)
- Chelsea Incorporated Place (completely outside District 39)
- Justice Census Designated Place (completely outside District 39)
- Fort Baker Military Installation
- Water Body Water Body
- Interstate Hwy Interstate Hwy
- U.S. Hwy U.S. Hwy
- Other Major Road Other Major Road
- Other Road Other Road
- Railroad Railroad

Congressional districts are those in effect for the 109th Congress of the United States (January 2005-2007). All other boundaries and names are as of January 1, 2003. The boundaries shown on this map are for Census Bureau statistical data collection and tabulation purposes only; their direction and designation for statistical purposes are not a constitutionally determined jurisdictional authority or right of ownership or control.

Source: U.S. Census Bureau, "PL95-600 Equal Area Census 2000 Projection: State-based Apportionment - Equal Area" Prepared by the Geography Division

Scale: 1:29,000

US CENSUS BUREAU
Helping You Make Informed Decisions