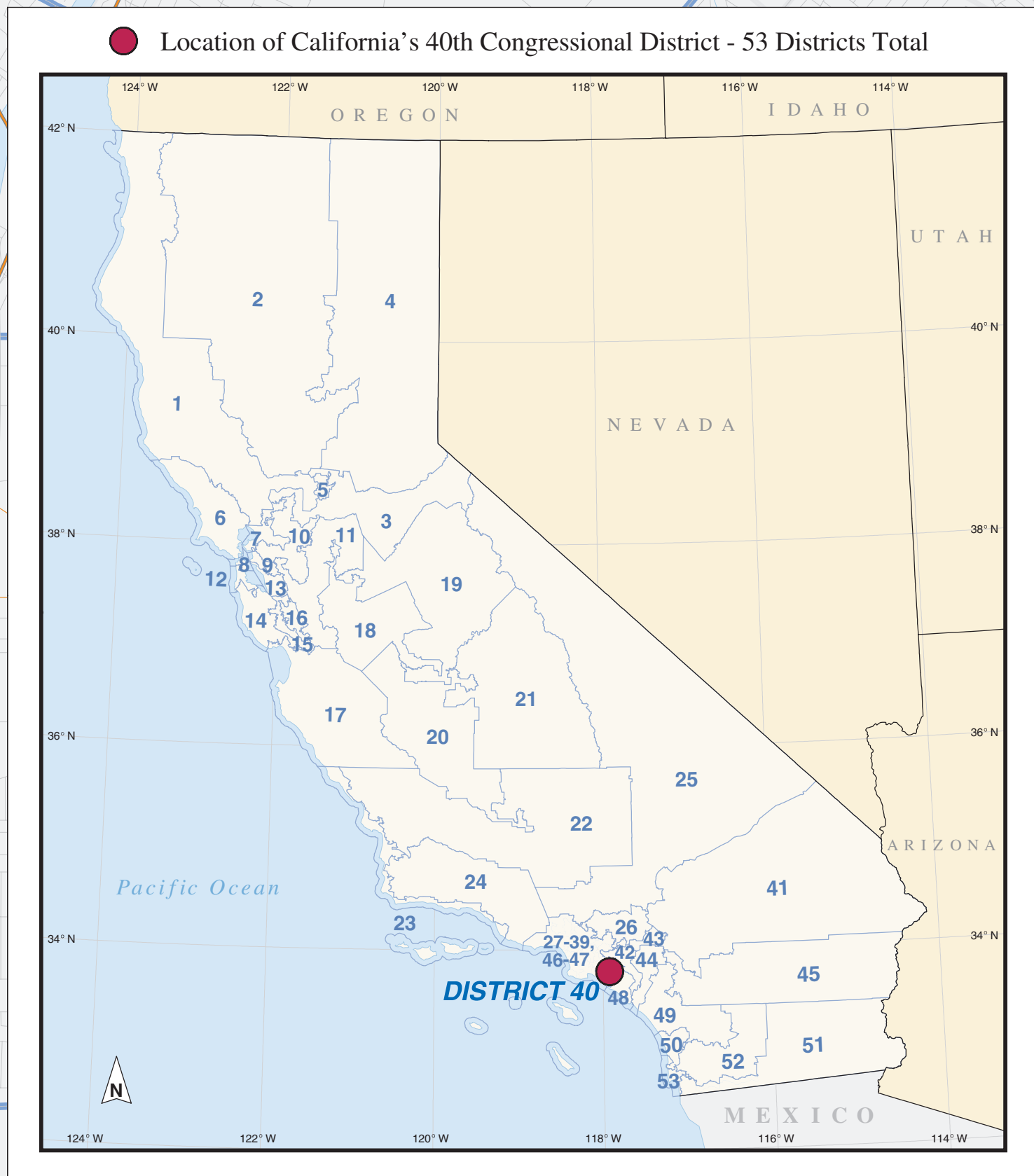


109th Congress of the United States

California - Congressional District 40

Representative Edward R. Royce



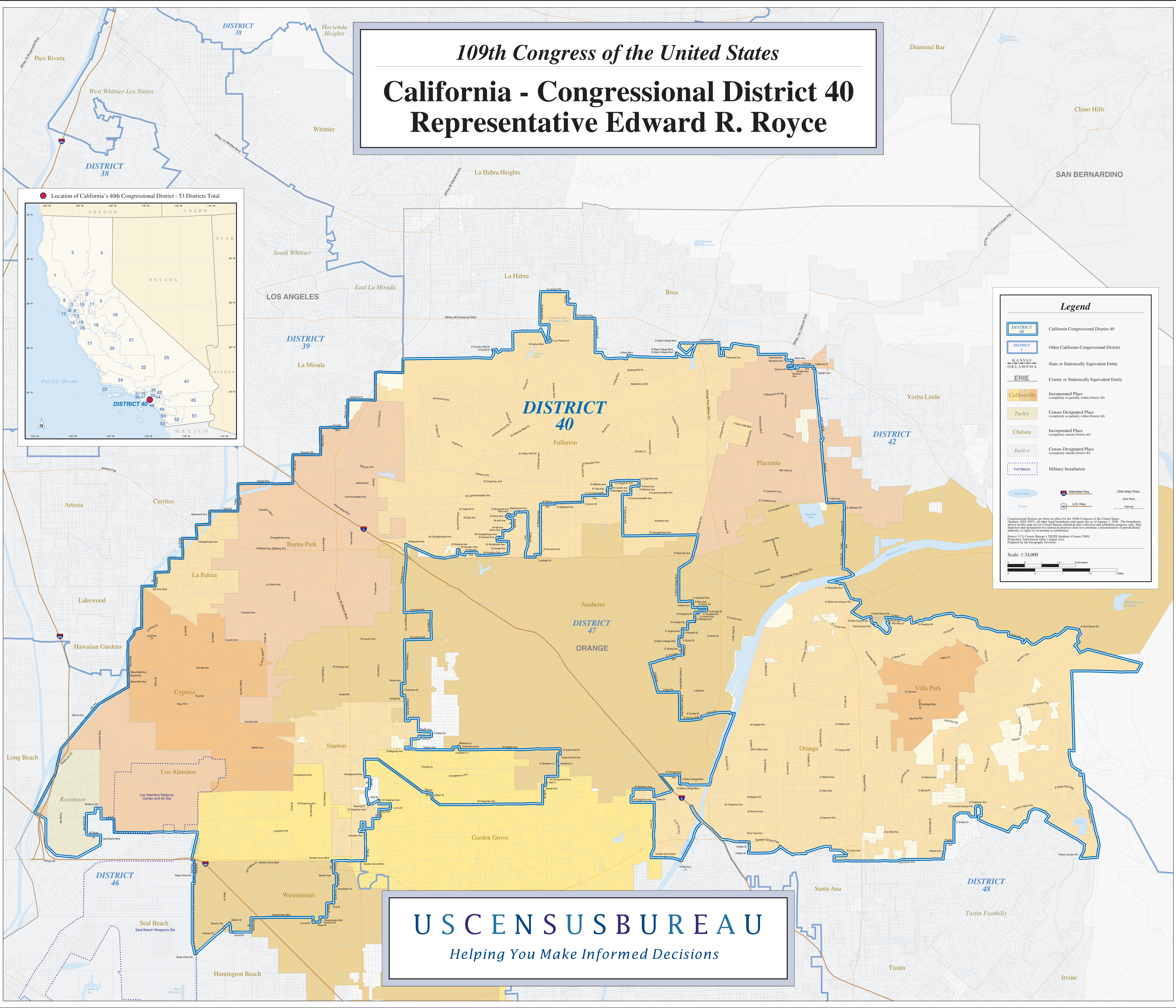
Legend

- DISTRICT 40** California Congressional District 40
- DISTRICT** Other California Congressional District
- KANSAS, OKLAHOMA** State or Statistically Equivalent Entity
- ERIE** County or Statistically Equivalent Entity
- Collinsville** Incorporated Place (completely or partially within District 40)
- Turley** Census Designated Place (completely or partially within District 40)
- Chelsea** Incorporated Place (completely outside District 40)
- Justice** Census Designated Place (completely outside District 40)
- Port Blair** Military Installation
- Water Body** Water Body
- Stream** Stream
- Interstate Hwy** Interstate Hwy
- U.S. Hwy** U.S. Hwy
- Other Major Road** Other Major Road
- Other Road** Other Road
- Railroad** Railroad

Congressional districts are those in effect for the 109th Congress of the United States (January 2005-2007); all other legal boundaries and names are as of January 1, 2005. The boundaries shown on this map are for Census Bureau statistical data collection and tabulation purposes only; their depiction and description for statistical purposes does not constitute a determination of jurisdictional authority or rights of ownership or control.

Source: U.S. Census Bureau's TIGER database (Census 2000) Projection: State Plane Albers Equal Area Prepared by the Geography Division

Scale: 1:34,000



USCENSUSBUREAU
Helping You Make Informed Decisions