

109th Congress of the United States

# California - Congressional District 43

## Representative Joe Baca

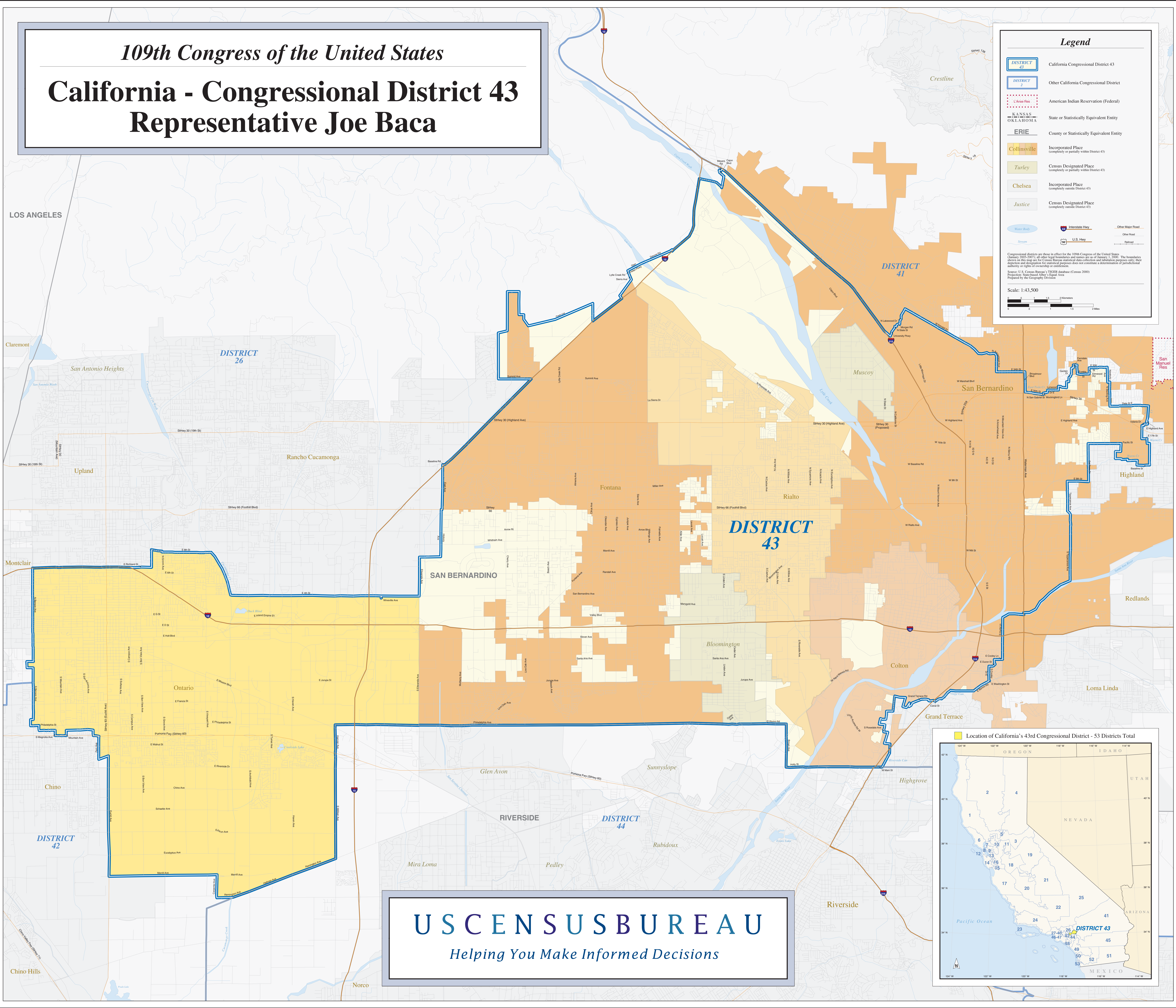
**Legend**

- DISTRICT 43 California Congressional District 43
- DISTRICT 2 Other California Congressional District
- American Res American Indian Reservation (Federal)
- KANSAS OKLAHOMA State or Statistically Equivalent Entity
- ERIE County or Statistically Equivalent Entity
- Collinsville Incorporated Place (completely or partially within District 43)
- Turley Census Designated Place (completely or partially within District 43)
- Chelsea Incorporated Place (completely outside District 43)
- Justice Census Designated Place (completely outside District 43)
- Water Body Water Body
- Stream Stream
- Interstate Hwy
- U.S. Hwy
- Other Major Road
- Right-of-Way

Congressional districts are those in effect for the 109th Congress of the United States (January 2005-2007) as of their legal boundaries and names as of January 1, 2005. The boundaries shown on this map are for Census Bureau statistical data collection and tabulation purposes only; their depiction and designation for statistical purposes does not constitute a determination of jurisdictional authority or rights of ownership or control.

Source: U.S. Census Bureau, TIGER database (Census 2000)  
 Projection: StatePlane Albers, Legal Area  
 Prepared by the Geography Division

Scale: 1:43,500



**USCENSUSBUREAU**  
*Helping You Make Informed Decisions*