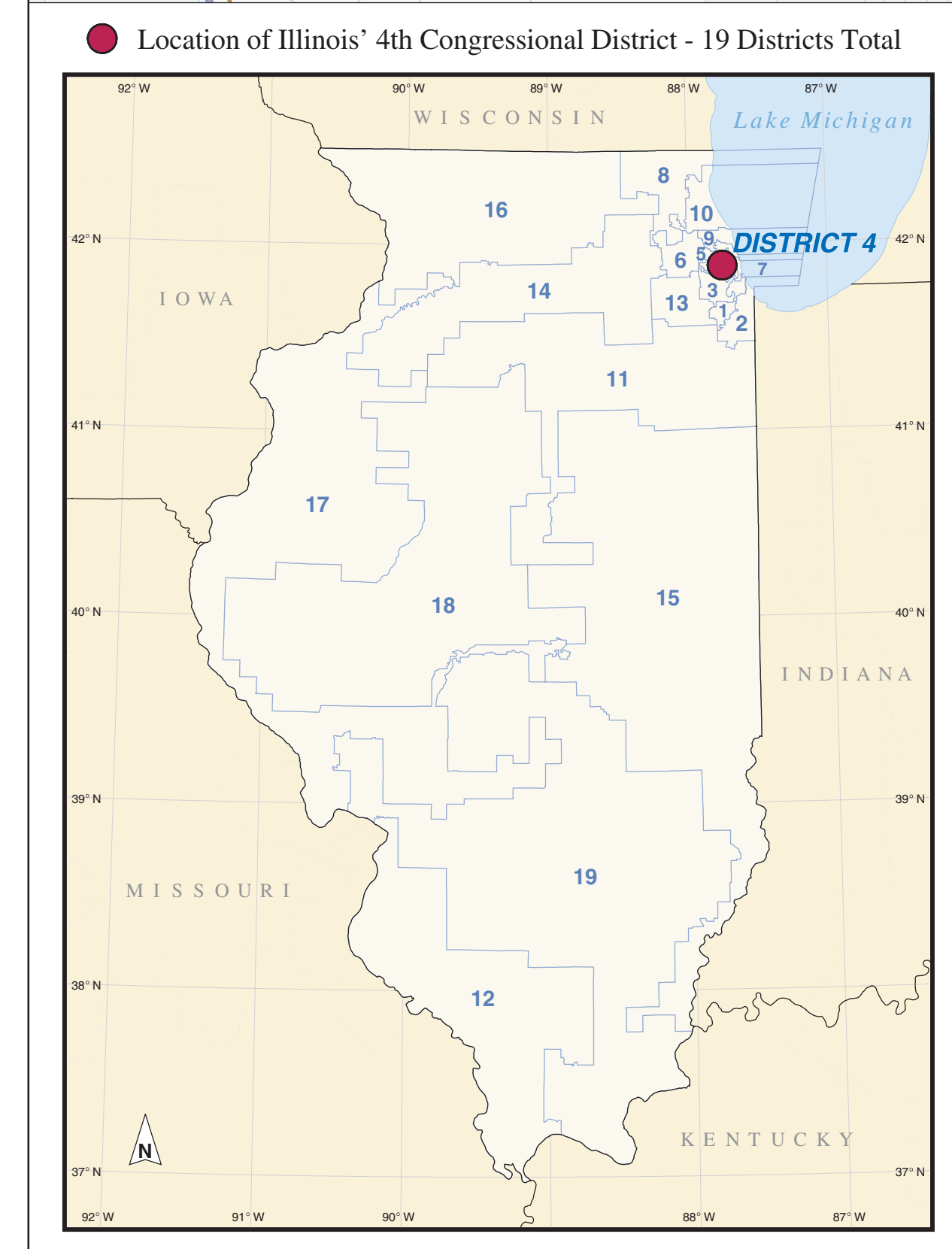
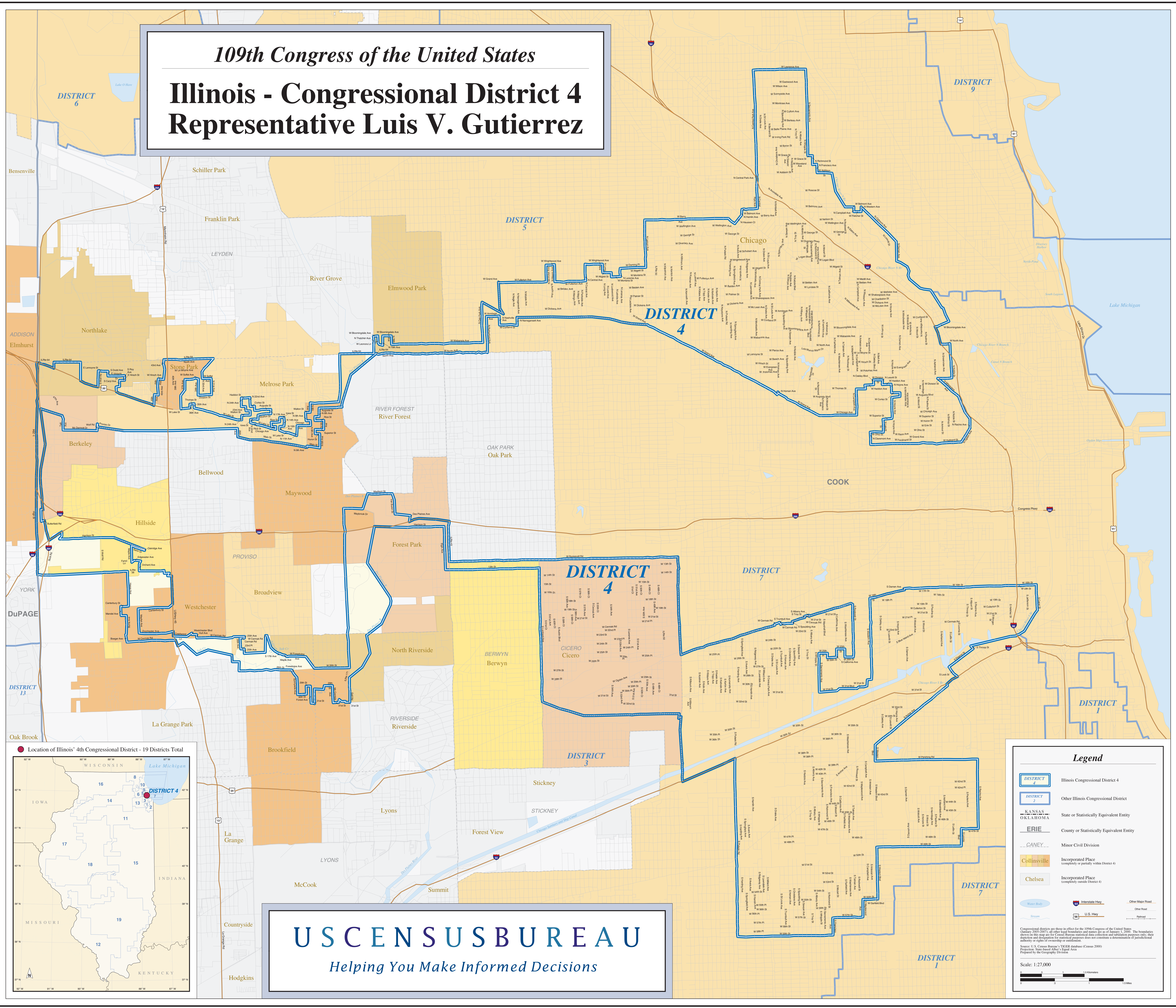


109th Congress of the United States
Illinois - Congressional District 4
Representative Luis V. Gutierrez



US CENSUS BUREAU
Helping You Make Informed Decisions

Legend

- DISTRICT 4 Illinois Congressional District 4
- DISTRICT 2 Other Illinois Congressional District
- KANSAS
OKLAHOMA State or Statistically Equivalent Entity
- ERIE County or Statistically Equivalent Entity
- CANEY Minor Civil Division
- Collinsville Incorporated Place (completely or partially within District 4)
- Chelsea Incorporated Place (completely outside District 4)
- Water Body
- Interstate Hwy
- U.S. Hwy
- Other Major Road
- Other Road
- Railroad

Congressional districts are shown in effect for the 109th Congress of the United States (January 2005-2007). All other map boundaries and features are as of January 1, 2003. The boundaries shown on this map are for Census Bureau statistical data collection and tabulation purposes only; their depiction and designation for statistical purposes does not constitute a determination of jurisdictional authority or rights of ownership or control.

Source: U.S. Census Bureau, TIGER/Line database (Census 2000)
 Projection: State-based Albers Equal Area
 Prepared by the Geography Division

Scale: 1:27,000