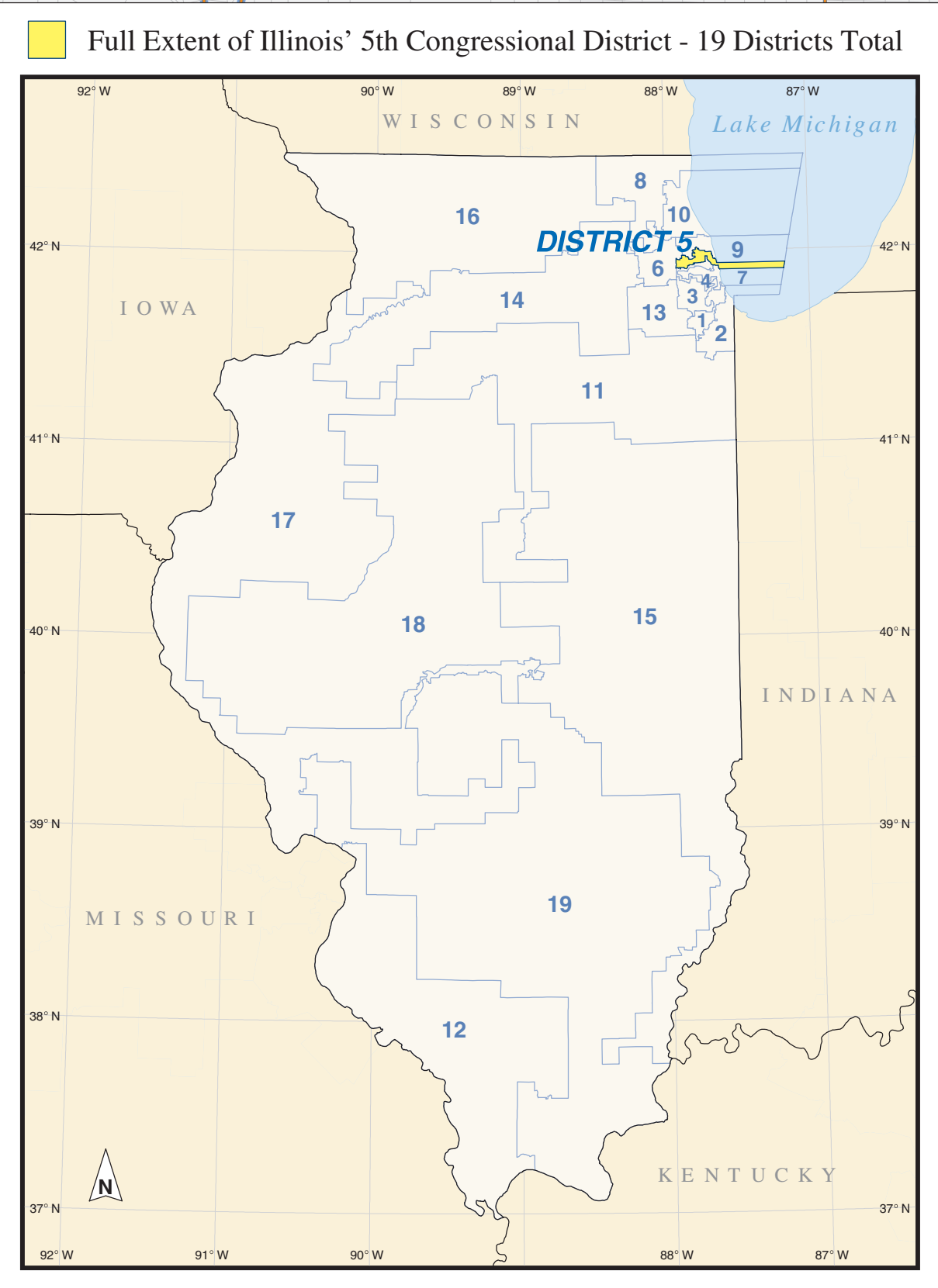
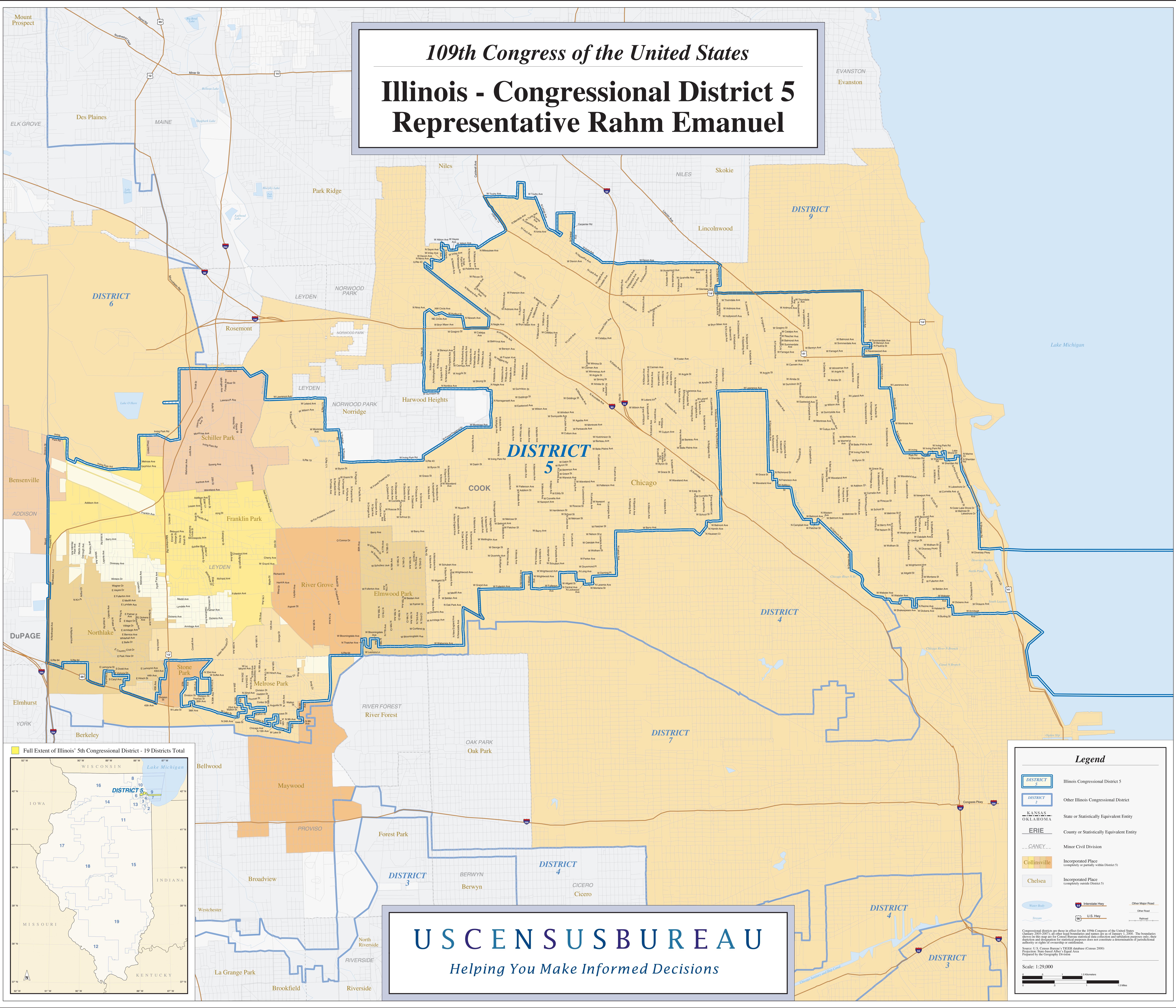


109th Congress of the United States

Illinois - Congressional District 5

Representative Rahm Emanuel



Legend

- DISTRICT 5 Illinois Congressional District 5
- DISTRICT 2 Other Illinois Congressional District
- KANSAS OKLAHOMA State or Statistically Equivalent Entity
- ERIE County or Statistically Equivalent Entity
- CANEY Minor Civil Division
- Collinsville Incorporated Place (completely or partially within District 5)
- Chelsea Incorporated Place (completely outside District 5)
- Water Body Water Body
- I-55 Interstate Hwy
- I-54 U.S. Hwy
- Other Major Road Other Major Road
- Other Road Other Road
- Railroad Railroad

Congressional districts are shown in effect for the 109th Congress of the United States (January 2005-2007). All other Area boundaries and names are as of January 1, 2003. The boundaries shown on this map are for Census Bureau statistical data collection and tabulation purposes only; they do not constitute a determination of jurisdictional authority or rights of ownership or control.

Source: U.S. Census Bureau, 2003. Digitized boundaries are not a determination of jurisdictional authority or rights of ownership or control.

Prepared by the Geography Division

Scale: 1:29,000

US CENSUS BUREAU

Helping You Make Informed Decisions