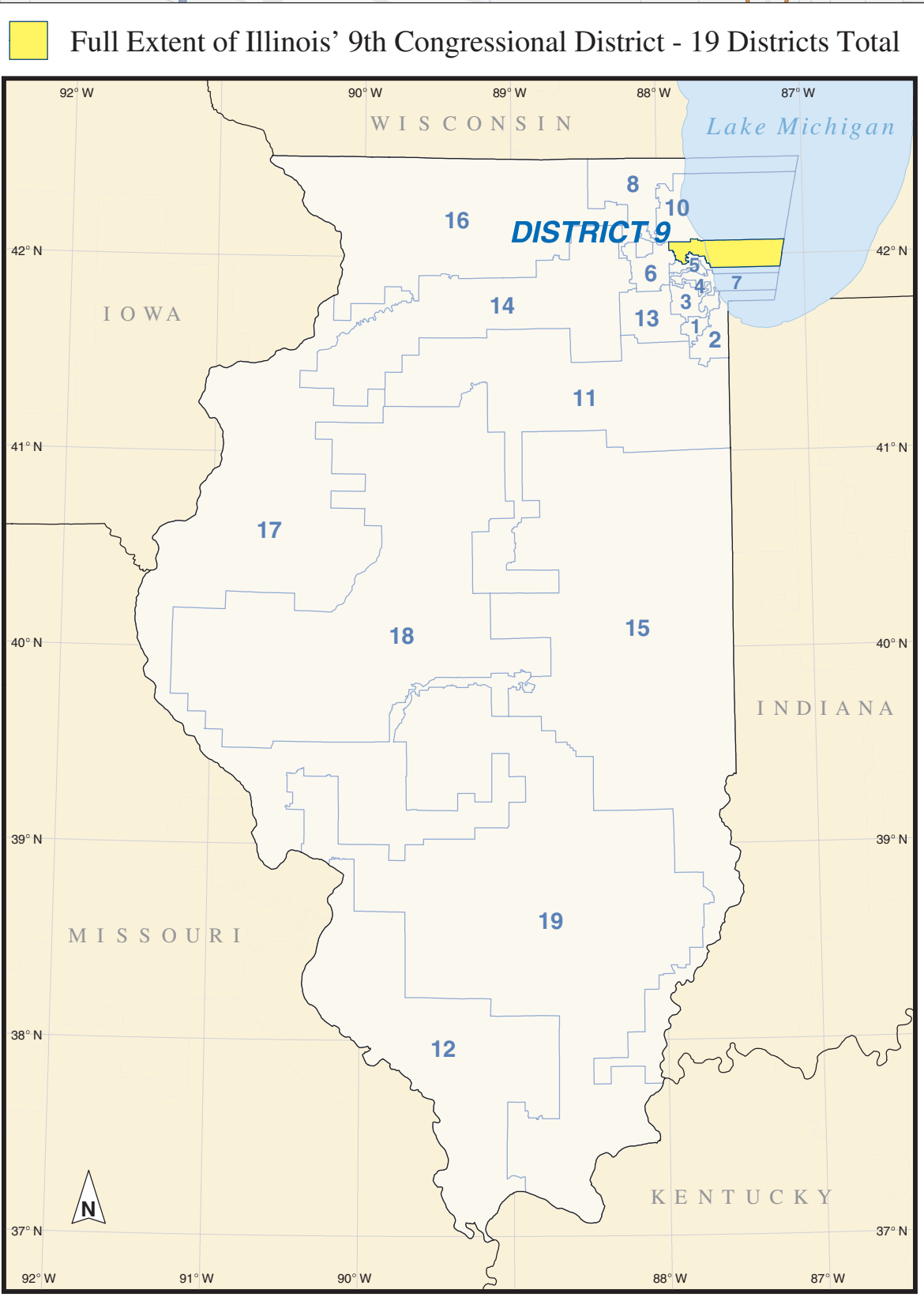
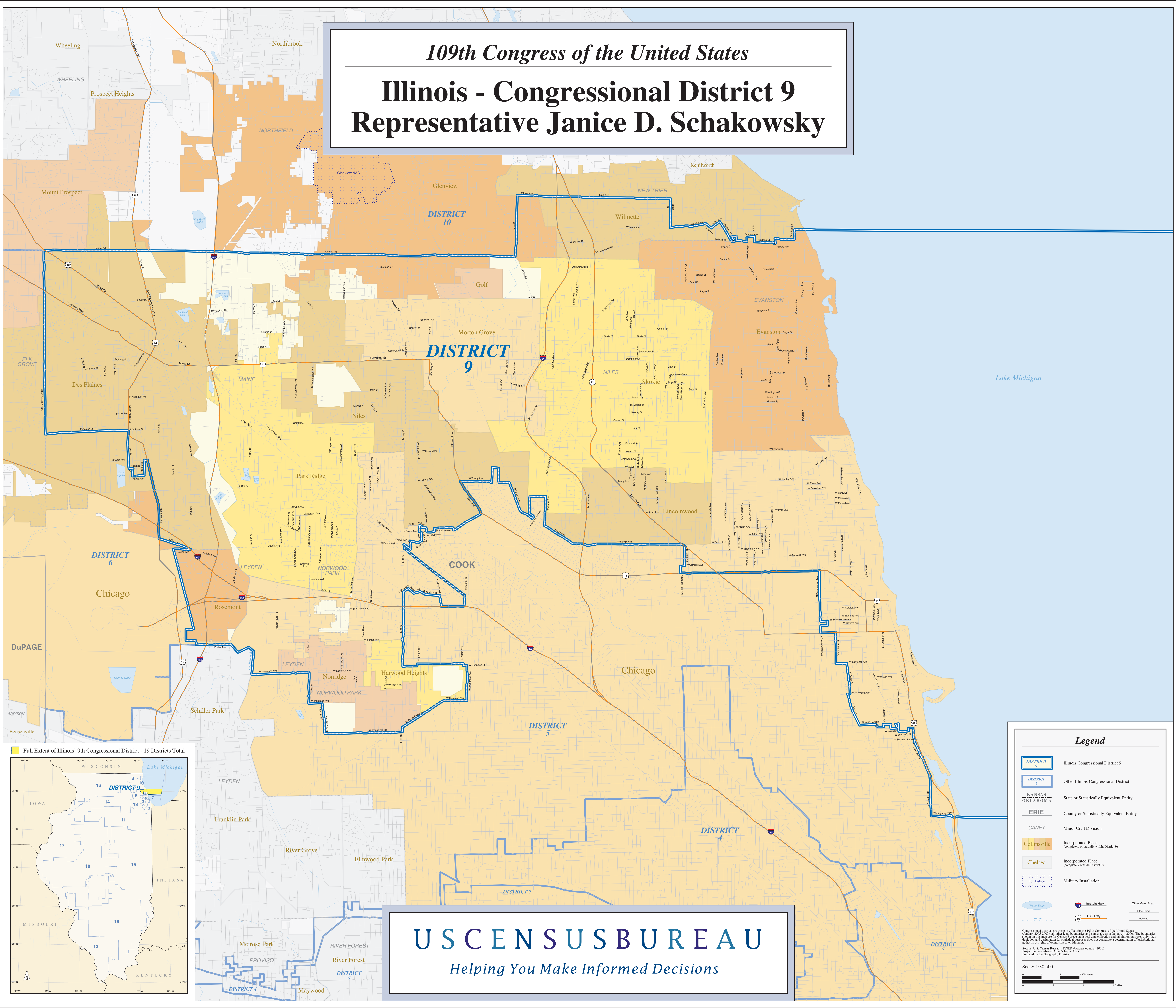


109th Congress of the United States

Illinois - Congressional District 9

Representative Janice D. Schakowsky



Legend

- DISTRICT 9 Illinois Congressional District 9
- DISTRICT 2 Other Illinois Congressional District
- KANSAS OKLAHOMA State or Statistically Equivalent Entity
- ERIE County or Statistically Equivalent Entity
- CANEY Minor Civil Division
- Collinsville Incorporated Place (completely or partially within District 9)
- Chelsea Incorporated Place (completely outside District 9)
- Fort Belvoir Military Installation
- Water Body Water Body
- 5 Interstate Hwy
- 14 U.S. Hwy
- Other Road Other Road
- Other Road Other Road
- Railroad Railroad

Congressional districts are shown in effect for the 109th Congress of the United States (January 2005-2007). All other map boundaries and names are as of January 1, 2003. The boundaries shown on this map are for Census Bureau statistical data collection and tabulation purposes only; their depiction and designation for statistical purposes does not constitute a determination of jurisdictional authority or rights of ownership or control.

Source: U.S. Census Bureau, "PL98-176: Equalization Act" (Census 2000) Prepared by the Geography Division

Scale: 1:30,500

USCENSUSBUREAU

Helping You Make Informed Decisions