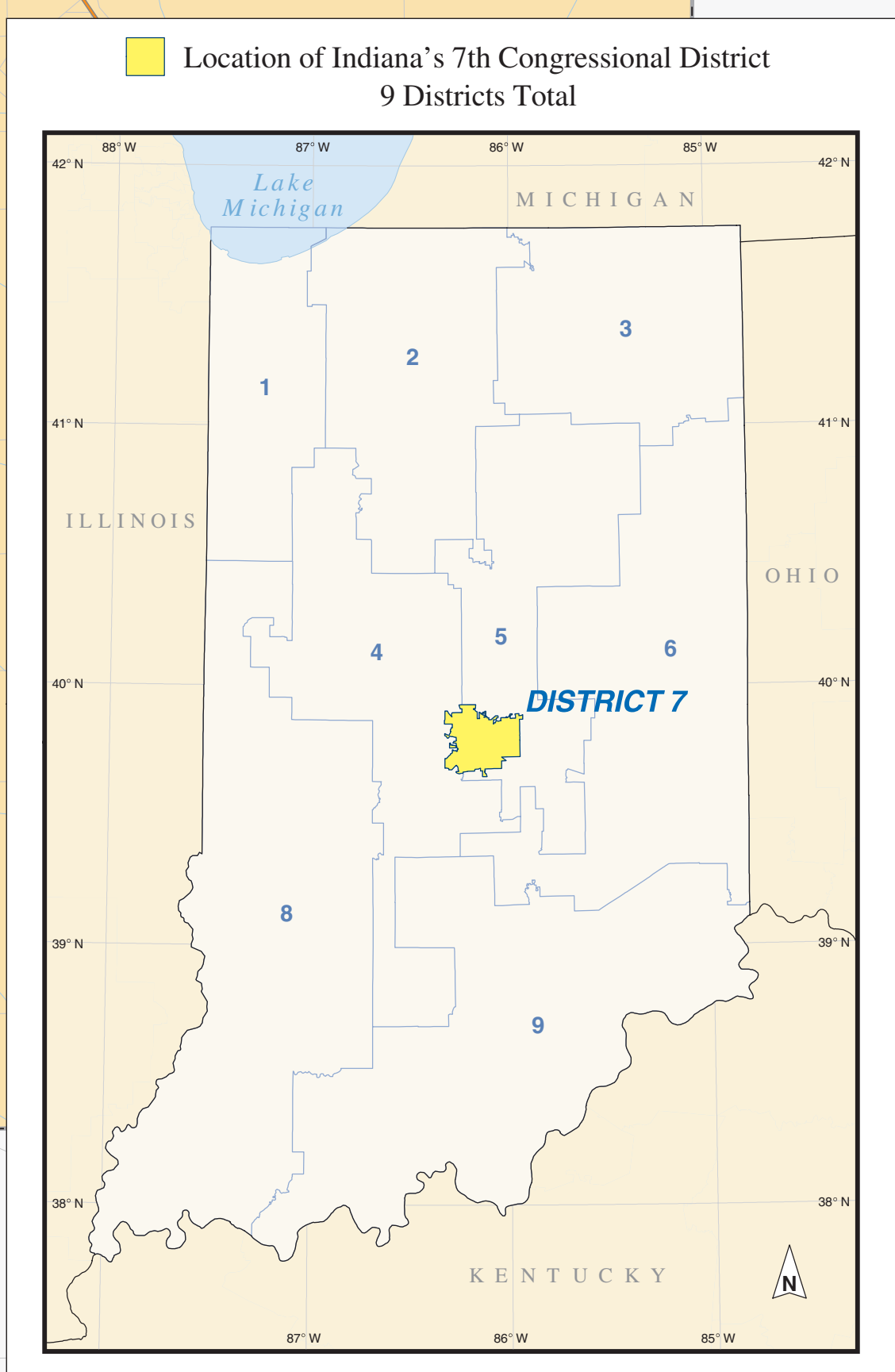
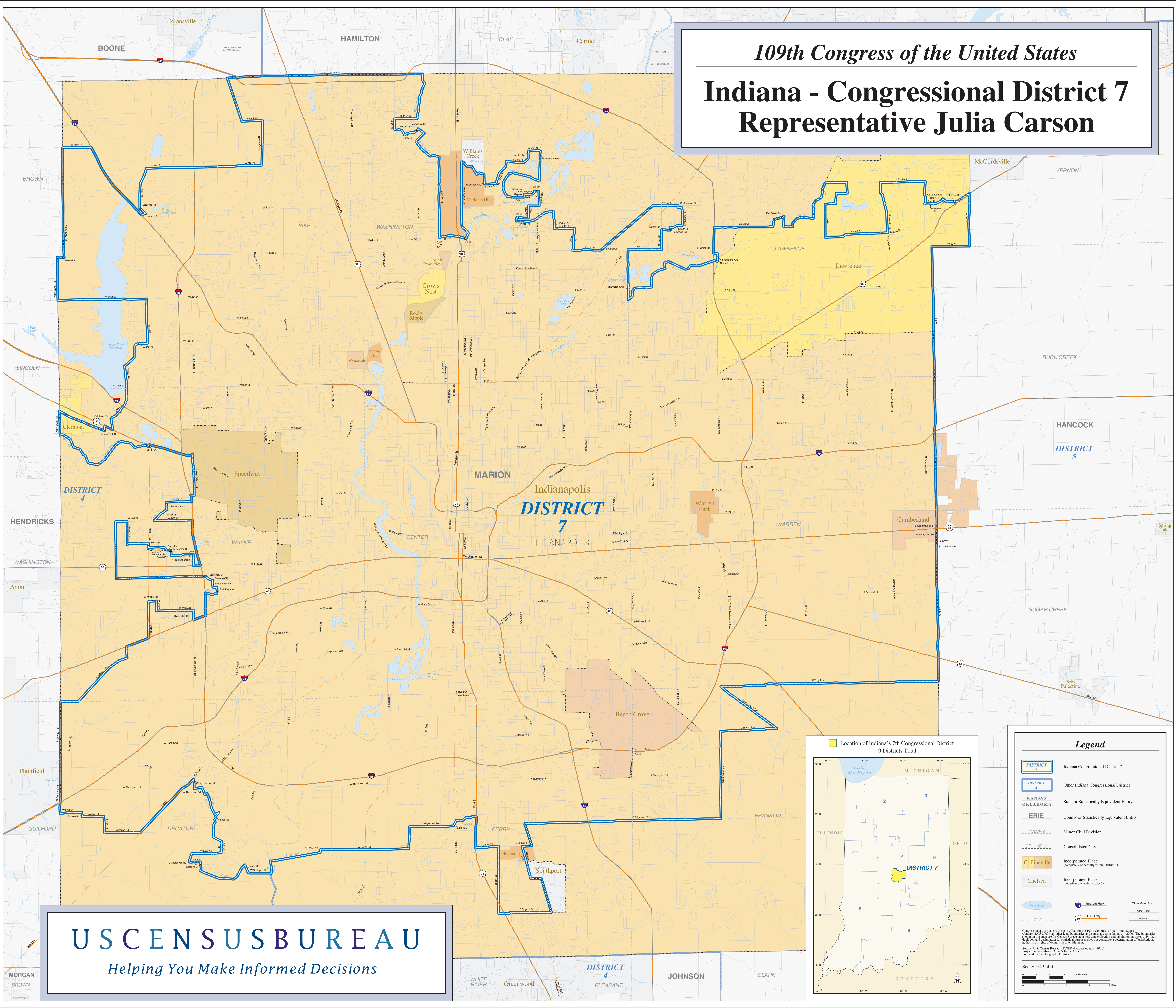


109th Congress of the United States

Indiana - Congressional District 7

Representative Julia Carson



Legend

- DISTRICT 7 Indiana Congressional District 7
- DISTRICT 2 Other Indiana Congressional District
- KANSAS State or Statistically Equivalent Entity
- OKLAHOMA State or Statistically Equivalent Entity
- ERIE County or Statistically Equivalent Entity
- CANEY Minor Civil Division
- COLUMBUS Consolidated City
- Collinsville Incorporated Place (completely or partially within District 7)
- Chelsea Incorporated Place (completely outside District 7)
- Interstate Hwy
- U.S. Hwy
- Other Major Road
- Other Road
- Railroad
- Water Body
- Stream

Congressional districts are shown in effect for the 109th Congress of the United States (January 2005-2007); all other state boundaries and names are as of January 1, 2005. The boundaries shown on this map are for Census Bureau statistical data collection and tabulation purposes only; their depiction and designation for statistical purposes does not constitute a determination of jurisdictional authority or rights of ownership or control.

Source: U.S. Census Bureau, 2005. Digitized boundaries from Census 2000. Projection: State Plane Albers Equal Area. Prepared by the Geography Division.

Scale: 1:42,500

US CENSUS BUREAU
Helping You Make Informed Decisions