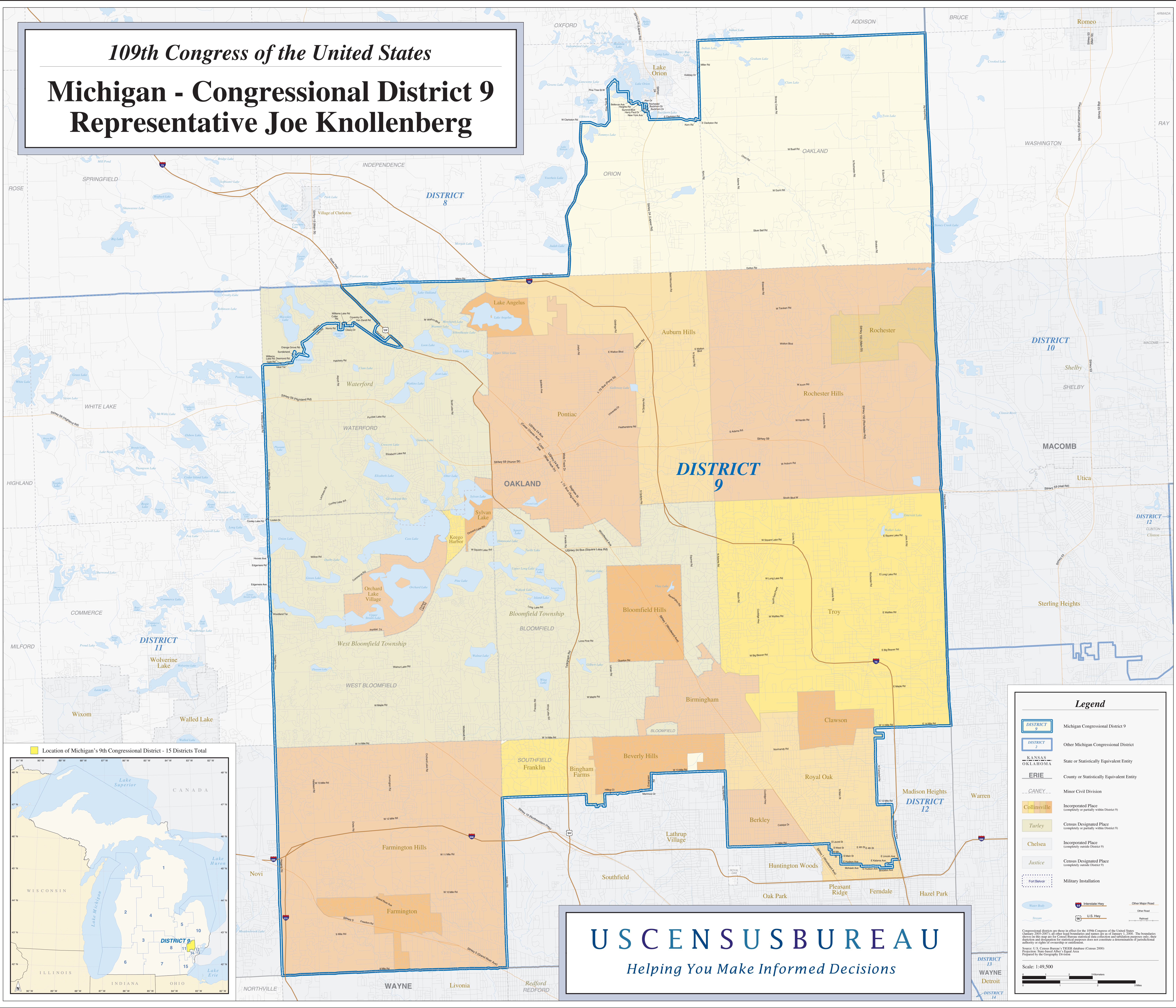


109th Congress of the United States

Michigan - Congressional District 9

Representative Joe Knollenberg



Legend

- DISTRICT 9 Michigan Congressional District 9
- DISTRICT 2 Other Michigan Congressional District
- KANSAS OKLAHOMA State or Statistically Equivalent Entity
- ERIE County or Statistically Equivalent Entity
- CANEY Minor Civil Division
- Collinsville Incorporated Place (completely or partially within District 9)
- Turley Census Designated Place (completely or partially within District 9)
- Chelsea Incorporated Place (completely outside District 9)
- Justice Census Designated Place (completely outside District 9)
- Fort Belvoir Military Installation
- Water Body Water Body
- I-75 Interstate Hwy
- M-10 U.S. Hwy
- Other Major Road Other Major Road
- Other Road Other Road
- Railroad Railroad

Congressional districts are shown in effect for the 109th Congress of the United States (January 2005-2007) as they appear in the Census Bureau's 2000 Census of Population and Housing. The boundaries shown on this map are for Census Bureau statistical data collection and tabulation purposes only; they do not constitute a determination of jurisdictional authority or rights of ownership or control.

Source: U.S. Census Bureau, 2000 Census of Population and Housing (Census 2000) Projection, State-based Apportionment Equal Area. Prepared by the Geography Division.

Scale: 1:49,500

0 1 2 3 Miles

US CENSUS BUREAU

Helping You Make Informed Decisions

DISTRICT 13
WAYNE
Detroit
DISTRICT 14