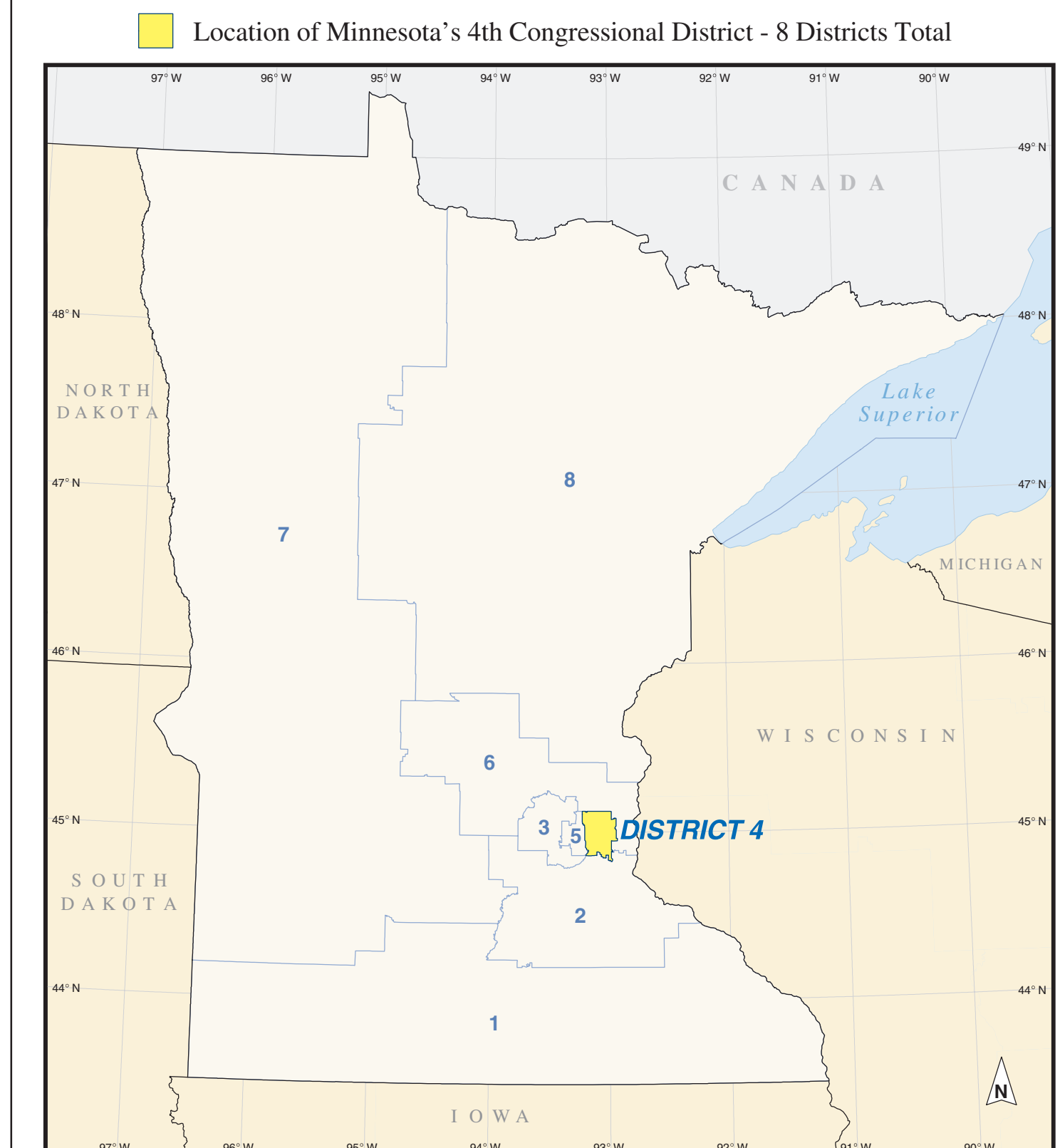
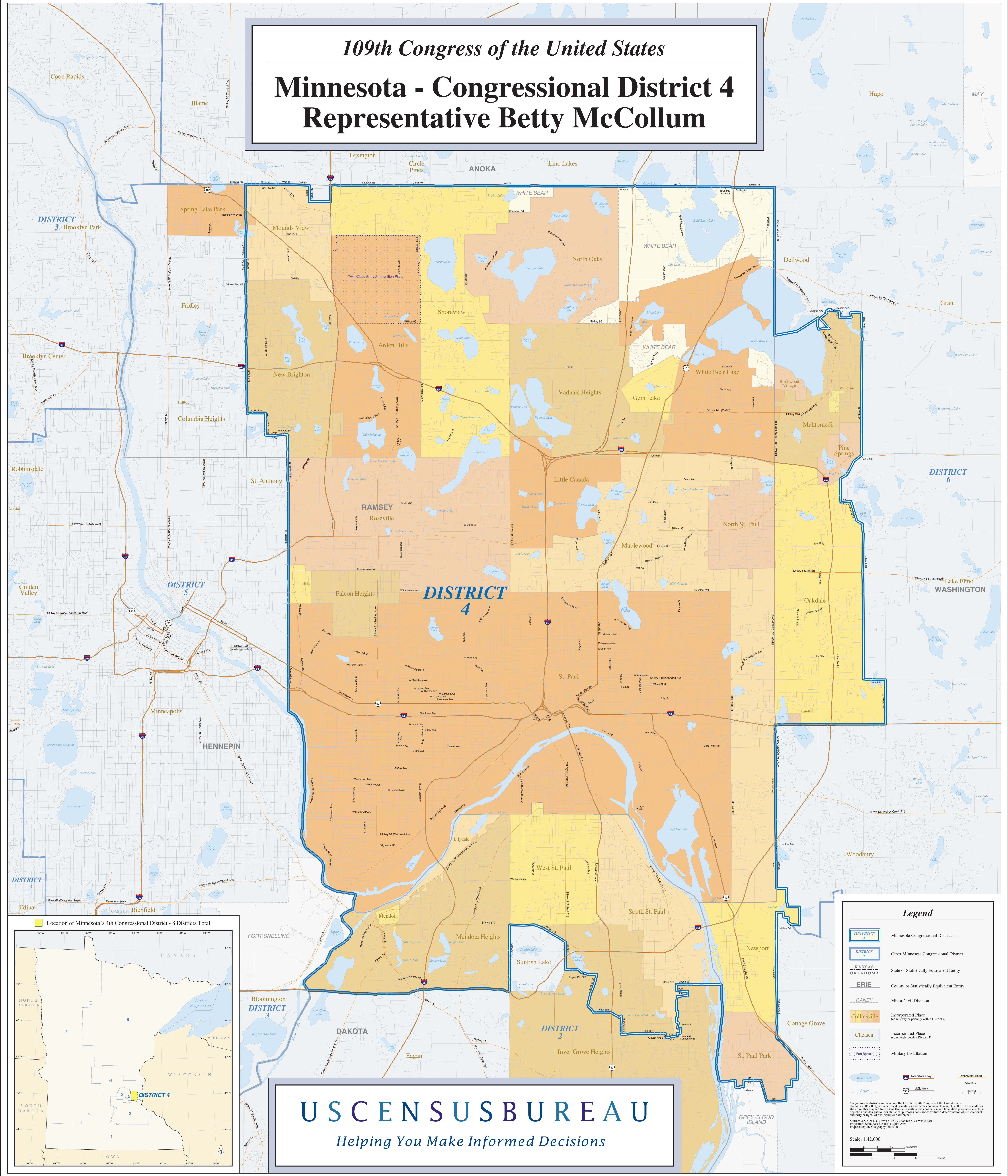


109th Congress of the United States

Minnesota - Congressional District 4

Representative Betty McCollum



Legend

- DISTRICT 4 Minnesota Congressional District 4
- DISTRICT 2 Other Minnesota Congressional District
- KANSAS State or Statistically Equivalent Entity
- OKLAHOMA County or Statistically Equivalent Entity
- ERIE County or Statistically Equivalent Entity
- CANBY Minor Civil Division
- Collinsville Incorporated Place (completely or partially within District 4)
- Chelsea Incorporated Place (completely outside District 4)
- Fort Belvoir Military Installation
- Water Body Water Body
- Other Major Road Other Major Road
- U.S. Hwy U.S. Hwy
- Railroad Railroad

Congressional districts are those in effect for the 109th Congress of the United States (January 2005-2007); all other legal boundaries and names are as of January 1, 2000. The boundaries shown on this map are for Census Bureau statistical data collection and tabulating purposes only; they do not constitute a determination of jurisdictional authority or rights of ownership or entitlement.

Source: U.S. Census Bureau's TIGER database (Census 2000) Projected Subcounty Level 1 Equal Area Prepared by the Geography Division

Scale: 1:42,000

USCENSUS BUREAU
Helping You Make Informed Decisions