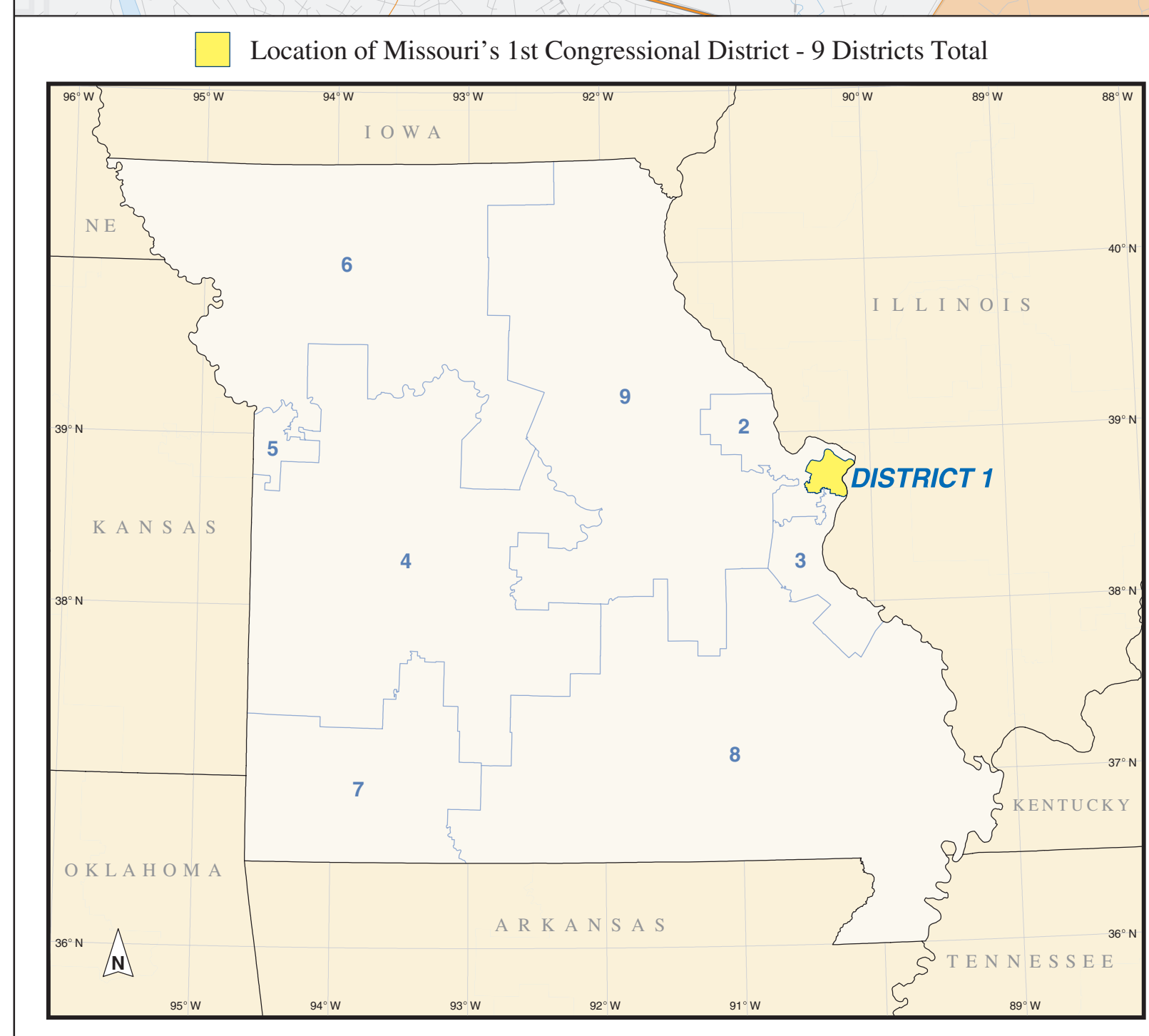
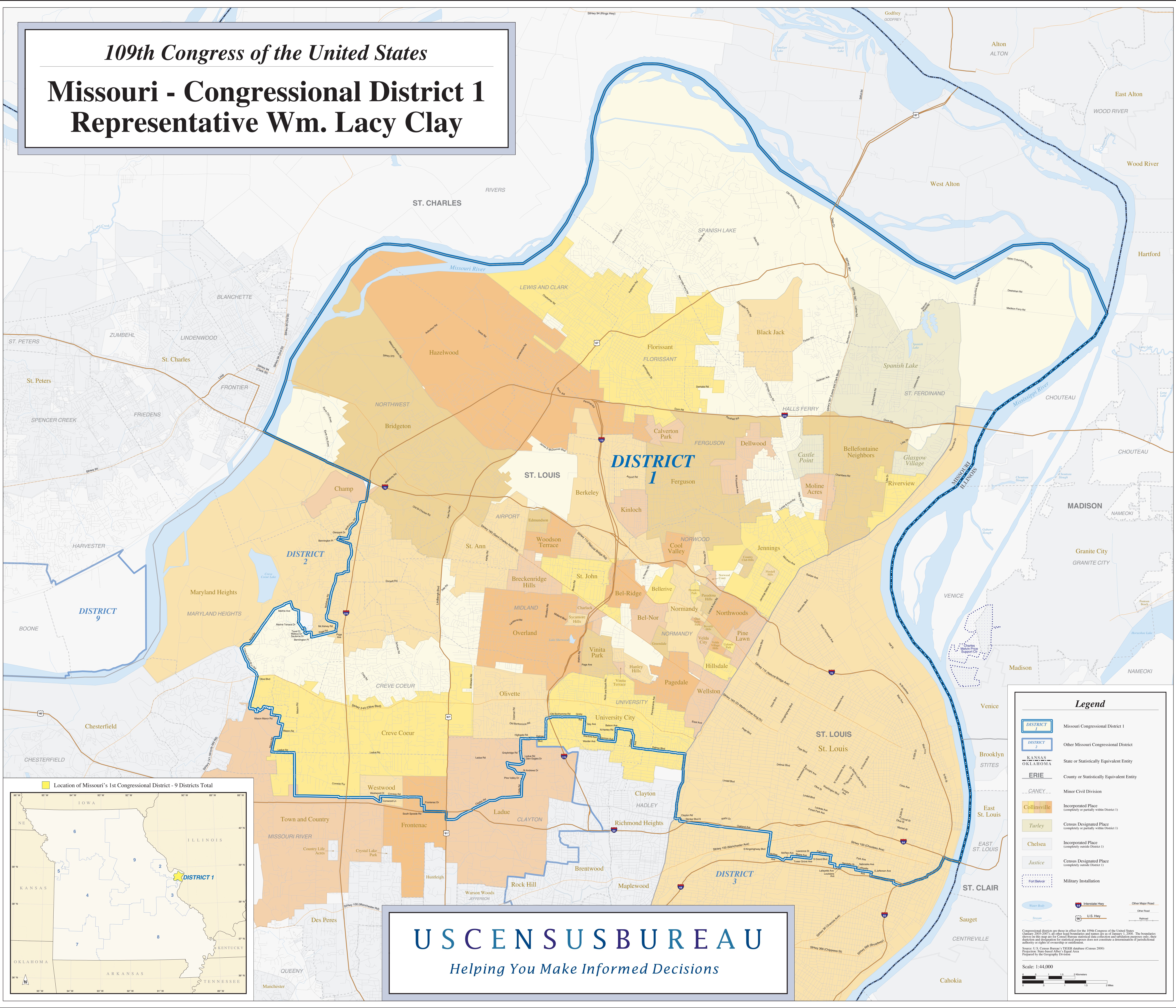


109th Congress of the United States

# Missouri - Congressional District 1 Representative Wm. Lacy Clay



### Legend

- DISTRICT 1** Missouri Congressional District 1
- DISTRICT 2** Other Missouri Congressional District
- KANSAS, OKLAHOMA** State or Statistically Equivalent Entity
- ERIE** County or Statistically Equivalent Entity
- CANEY** Minor Civil Division
- Collinsville** Incorporated Place (completely or partially within District 1)
- Turley** Census Designated Place (completely or partially within District 1)
- Chelsea** Incorporated Place (completely outside District 1)
- Justice** Census Designated Place (completely outside District 1)
- Fort Belvoir** Military Installation
- Water Body** Water Body
- Stream** Stream
- Interstate Hwy** Interstate Highway
- U.S. Hwy** U.S. Highway
- Other Major Road** Other Major Road
- Other Road** Other Road
- Pathway** Pathway

Congressional districts are those in effect for the 109th Congress of the United States (January 2005-2007); all other boundaries and names are as of January 1, 2000. The boundaries shown on this map are for Census Bureau statistical data collection and tabulation purposes only; their depiction and designation for statistical purposes does not constitute a determination of jurisdictional authority or rights of ownership or control.

Source: U.S. Census Bureau, 1992-2000 decennial census (Census 2000) Projection: State-based Albers Equal Area Projection by the Geography Division

Scale: 1:44,000

# US CENSUS BUREAU

Helping You Make Informed Decisions