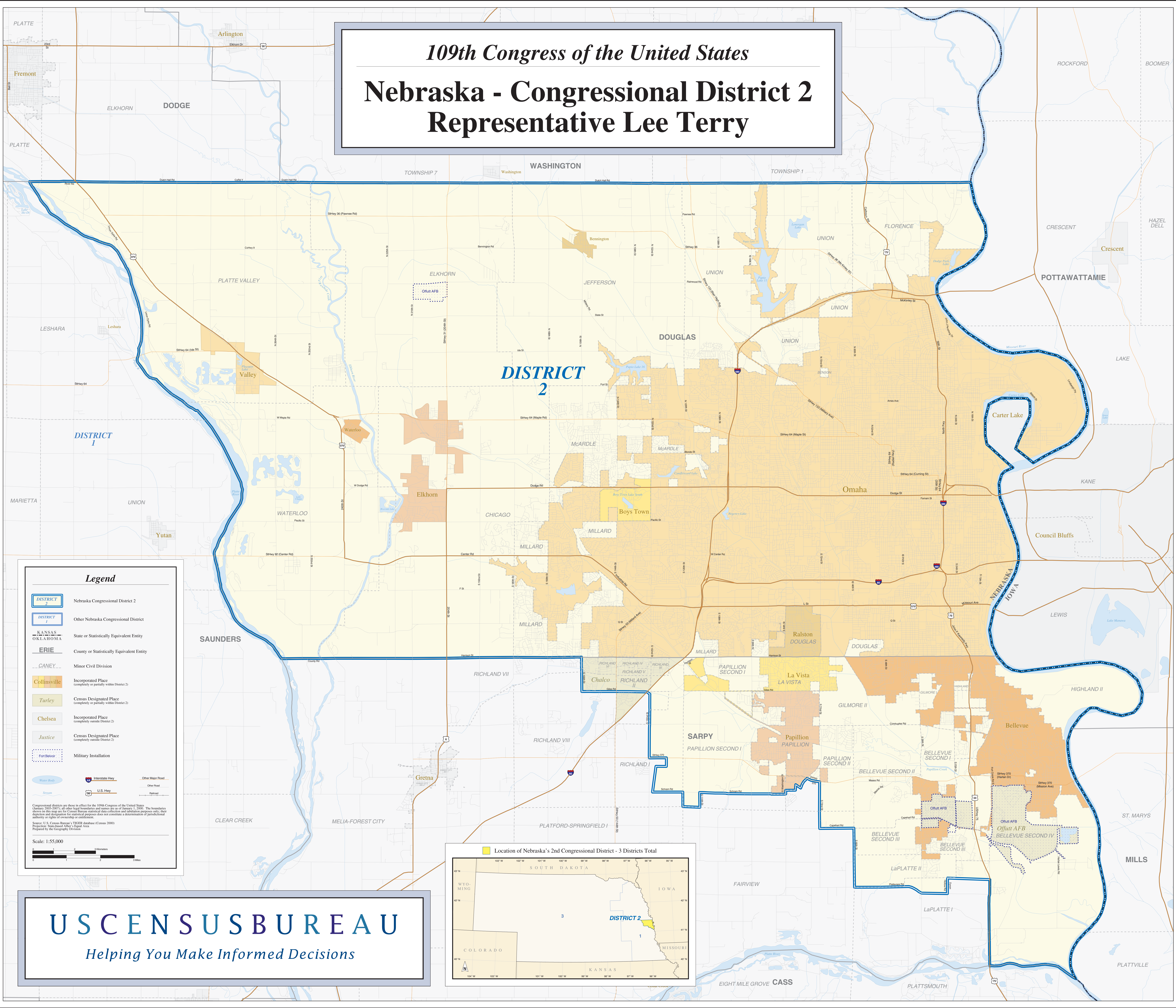


109th Congress of the United States

Nebraska - Congressional District 2

Representative Lee Terry

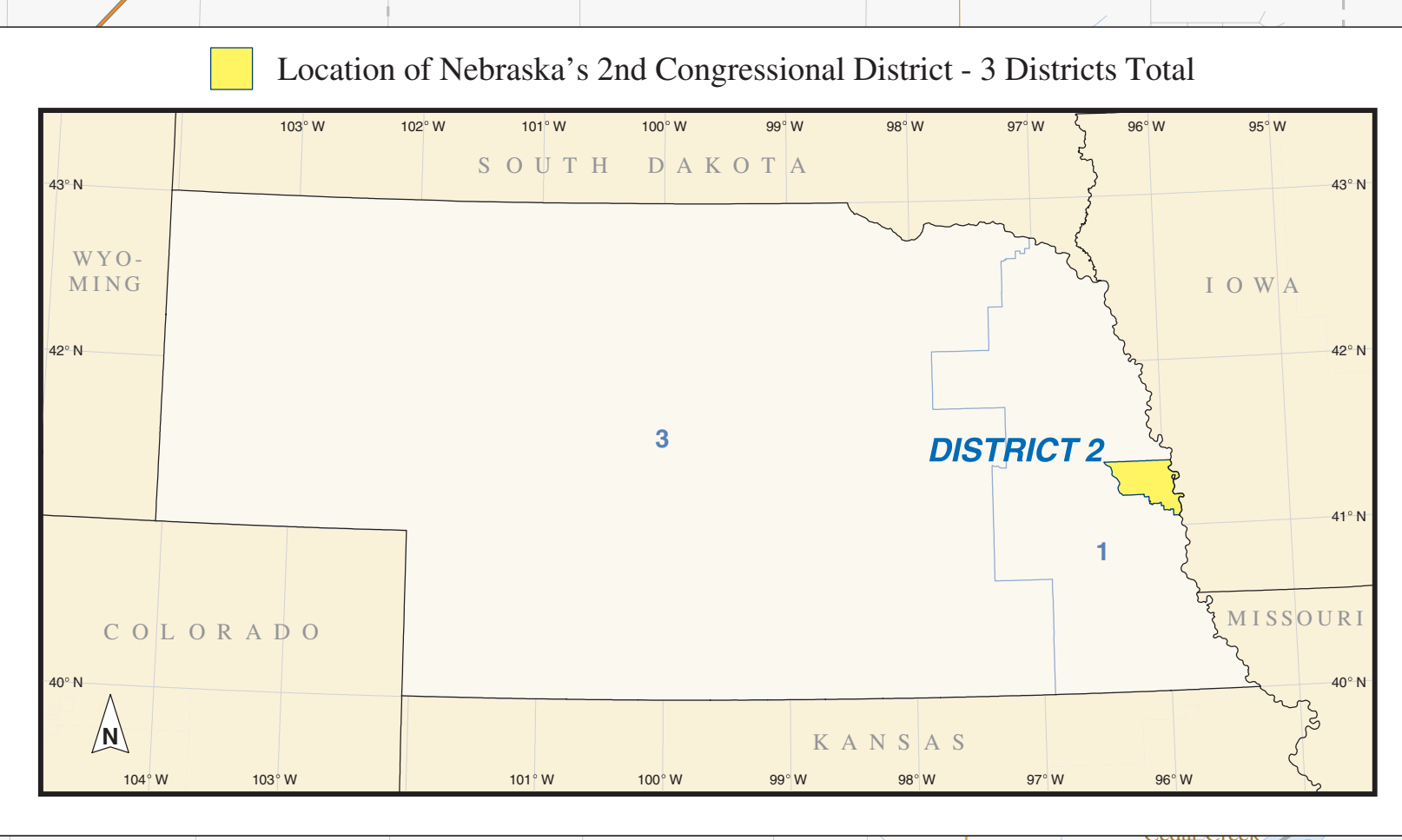


Legend

- DISTRICT 2 Nebraska Congressional District 2
- DISTRICT 1 Other Nebraska Congressional District
- KANSAS OKLAHOMA State or Statistically Equivalent Entity
- ERIE County or Statistically Equivalent Entity
- CANBY Minor Civil Division
- Collinsville Incorporated Place (completely or partially within District 2)
- Turley Census Designated Place (completely or partially within District 2)
- Chelsea Incorporated Place (completely outside District 2)
- Justice Census Designated Place (completely outside District 2)
- Fort Belvoir Military Installation
- Interstate Hwy
- U.S. Hwy
- Other Major Road
- Other Road
- Railroad
- Water Body
- Stream

Congressional districts are those in effect for the 109th Congress of the United States (January 2005-2007), all other legal boundaries and names are as of January 1, 2006. The boundaries shown on this map are for Census Bureau statistical data collection and tabulation purposes only; their detection and delineation for electoral purposes does not constitute a determination of jurisdictional authority or rights or obligations. Source: U.S. Census Bureau's TIGER database (© Census 2000) Projection: StatePlane Albers Equal Area Prepared by the Geography Division

Scale: 1:55,000



US CENSUS BUREAU
Helping You Make Informed Decisions