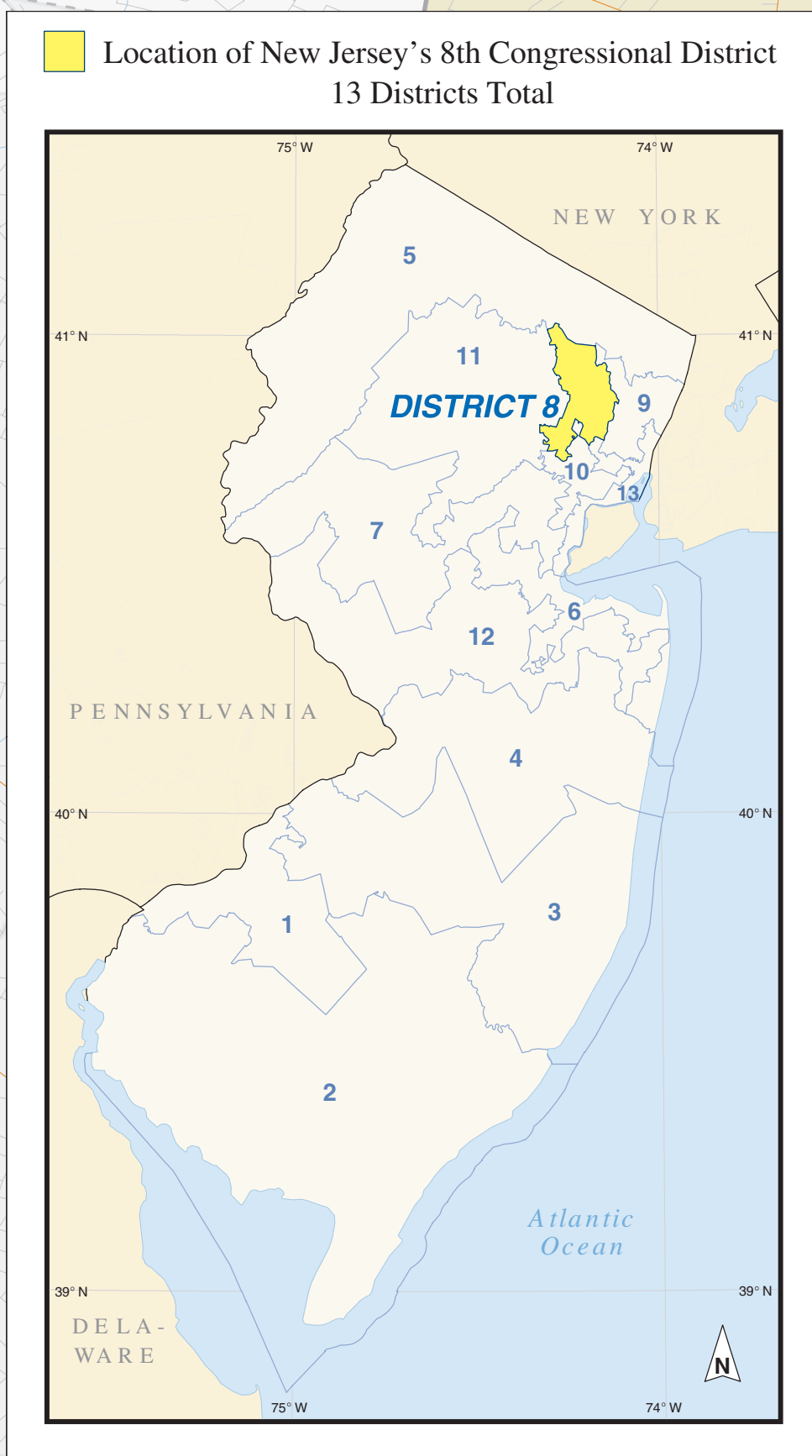
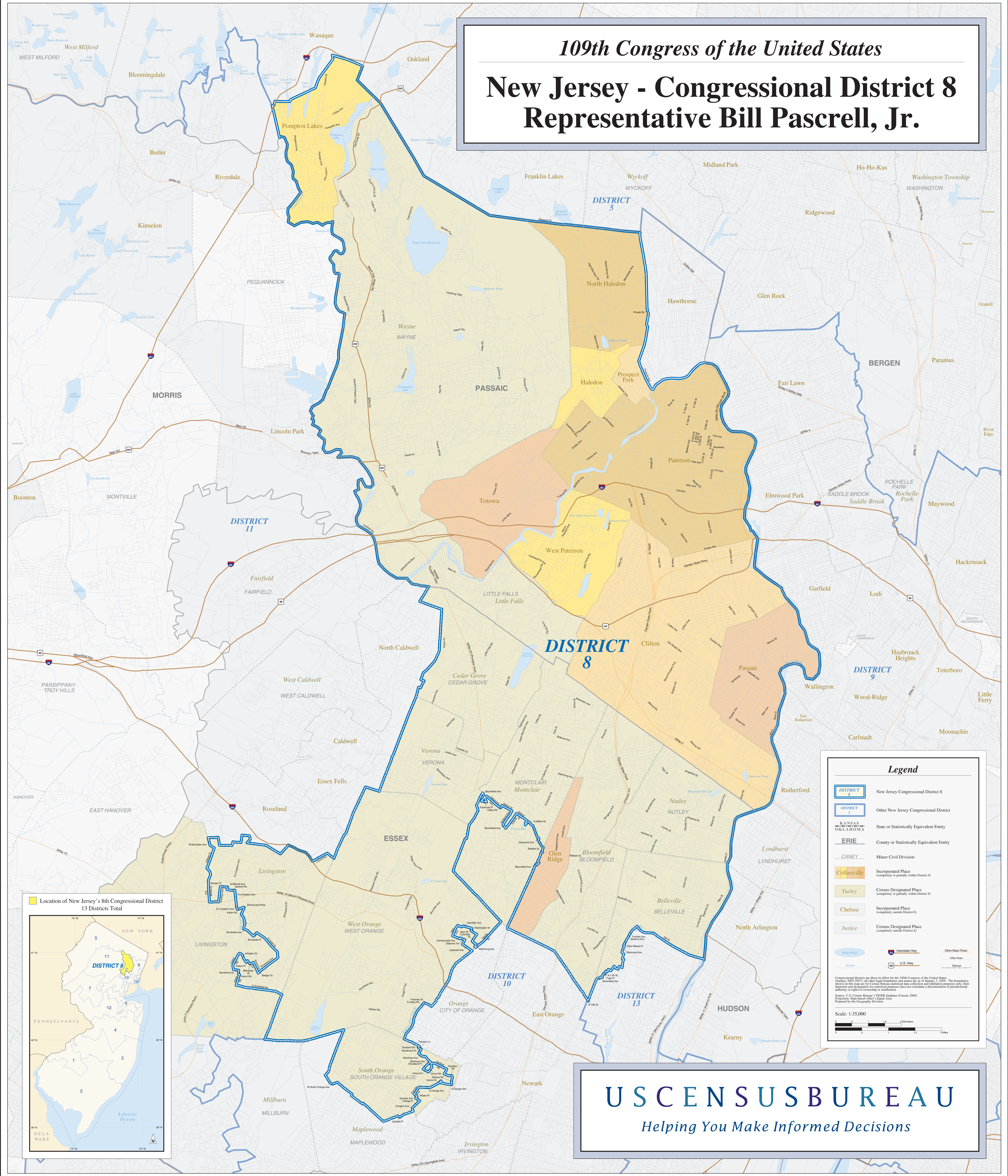


109th Congress of the United States
New Jersey - Congressional District 8
Representative Bill Pascrell, Jr.



Legend

- DISTRICT 8 New Jersey Congressional District 8
- DISTRICT 2 Other New Jersey Congressional District
- KANSAS
OKLAHOMA State or Statistically Equivalent Entity
- ERIE County or Statistically Equivalent Entity
- CANEY Minor Civil Division
- Collinsville Incorporated Place (completely or partially within District 8)
- Turley Census Designated Place (completely or partially within District 8)
- Chelsea Incorporated Place (completely outside District 8)
- Justice Census Designated Place (completely outside District 8)
- Water Body Water Body
- Stream Stream
- Interstate Hwy Interstate Hwy
- U.S. Hwy U.S. Hwy
- Other Major Road Other Major Road
- Other Road Other Road
- Railroad Railroad

Congressional districts are those in effect for the 109th Congress of the United States (January 2005-2007); all other legal boundaries and names are as of January 1, 2000. The boundaries shown on this map are for Census Bureau statistical data collection and tabulating purposes only; their accuracy and interpretation for statistical purposes does not constitute a determination of jurisdictional authority or rights of ownership or control.
 Source: U.S. Census Bureau's TIGER database (Census 2000) Projection: StatePlane Other: Equal Area Prepared by the Geography Division

Scale: 1:35,000

USCENSUSBUREAU
Helping You Make Informed Decisions