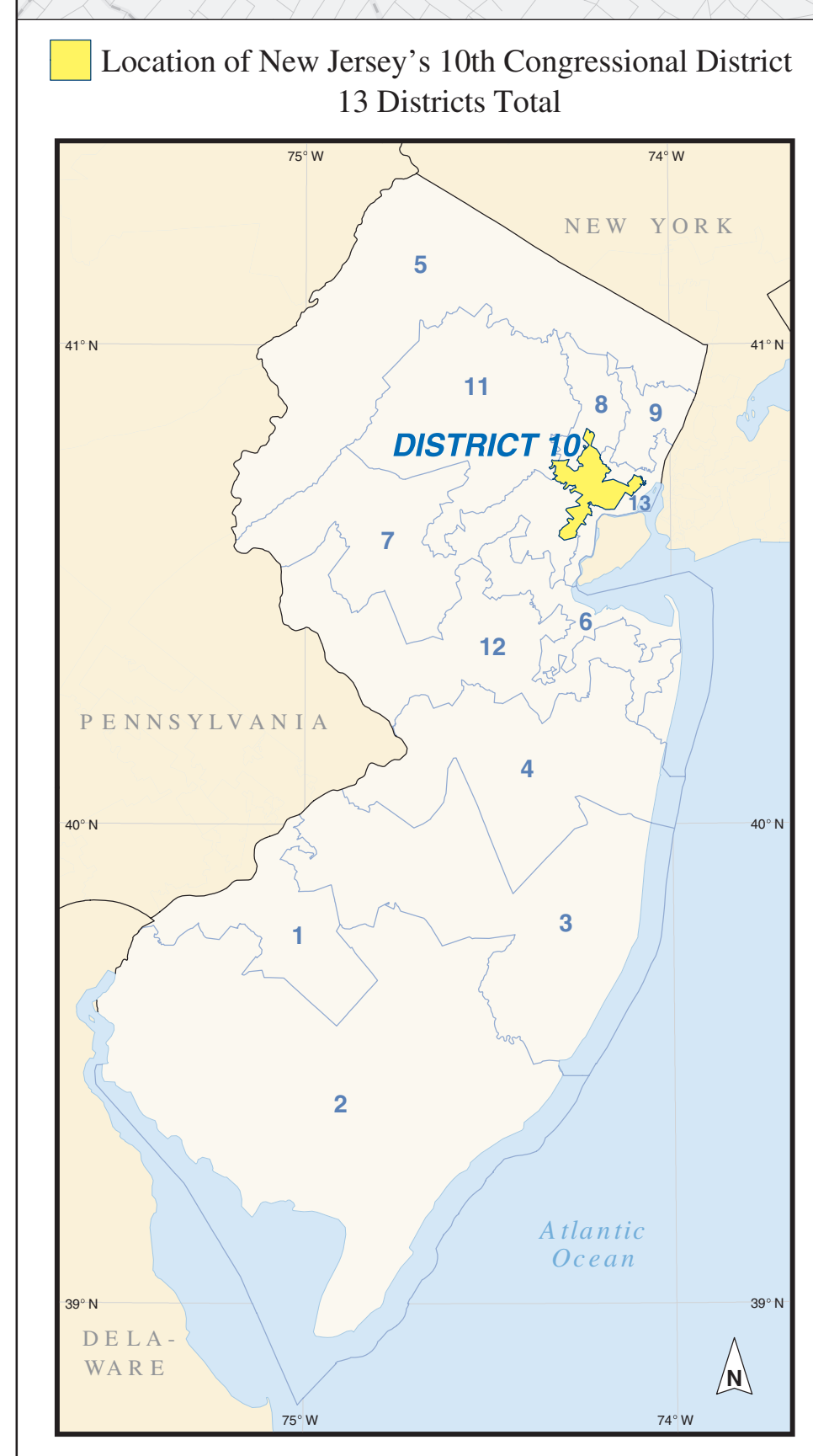
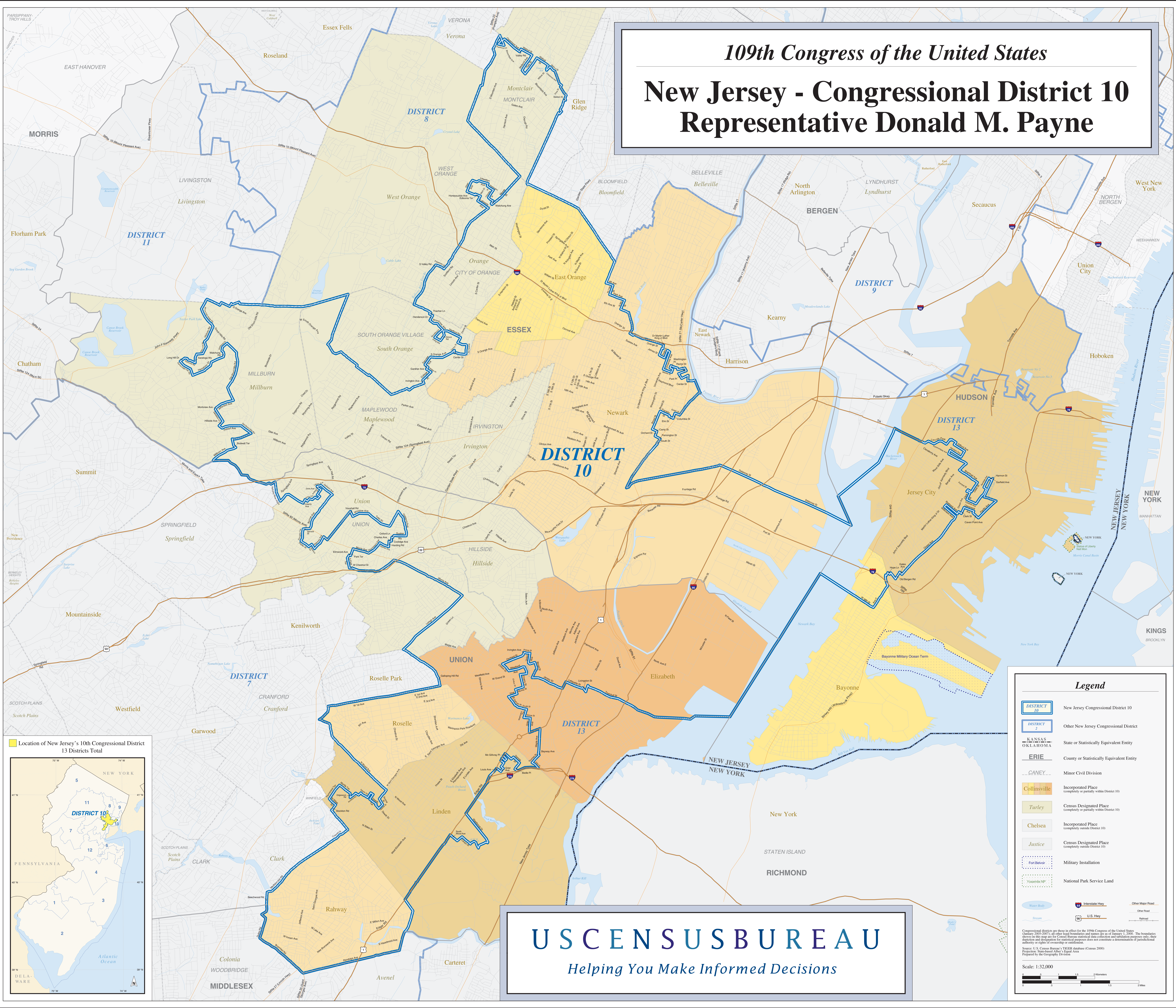


109th Congress of the United States

New Jersey - Congressional District 10

Representative Donald M. Payne



Legend

- DISTRICT 10 New Jersey Congressional District 10
- DISTRICT 2 Other New Jersey Congressional District
- KANSAS
OKLAHOMA State or Statistically Equivalent Entity
- ERIE County or Statistically Equivalent Entity
- CANEY Minor Civil Division
- Collinsville Incorporated Place (completely or partially within District 10)
- Turley Census Designated Place (completely or partially within District 10)
- Chelsea Incorporated Place (completely outside District 10)
- Justice Census Designated Place (completely outside District 10)
- Fort Belvoir Military Installation
- Yosemite NP National Park Service Land
- Water Body Water Body
- Interstate Hwy Interstate Hwy
- U.S. Hwy U.S. Hwy
- Other Major Road Other Major Road
- Other Road Other Road
- Railroad Railroad

Congressional districts are shown in effect for the 109th Congress of the United States (January 3, 2005 - January 3, 2007) as determined by the U.S. Census Bureau and the New Jersey State Legislature. The boundaries shown on this map are for Census Bureau statistical data collection and tabulation purposes only; they do not constitute a determination of jurisdictional authority or rights of ownership or control.

Source: U.S. Census Bureau, 2000 Census of Population and Housing, Census 2000

Prepared by the Geography Division

Scale: 1:32,000

US CENSUS BUREAU
Helping You Make Informed Decisions