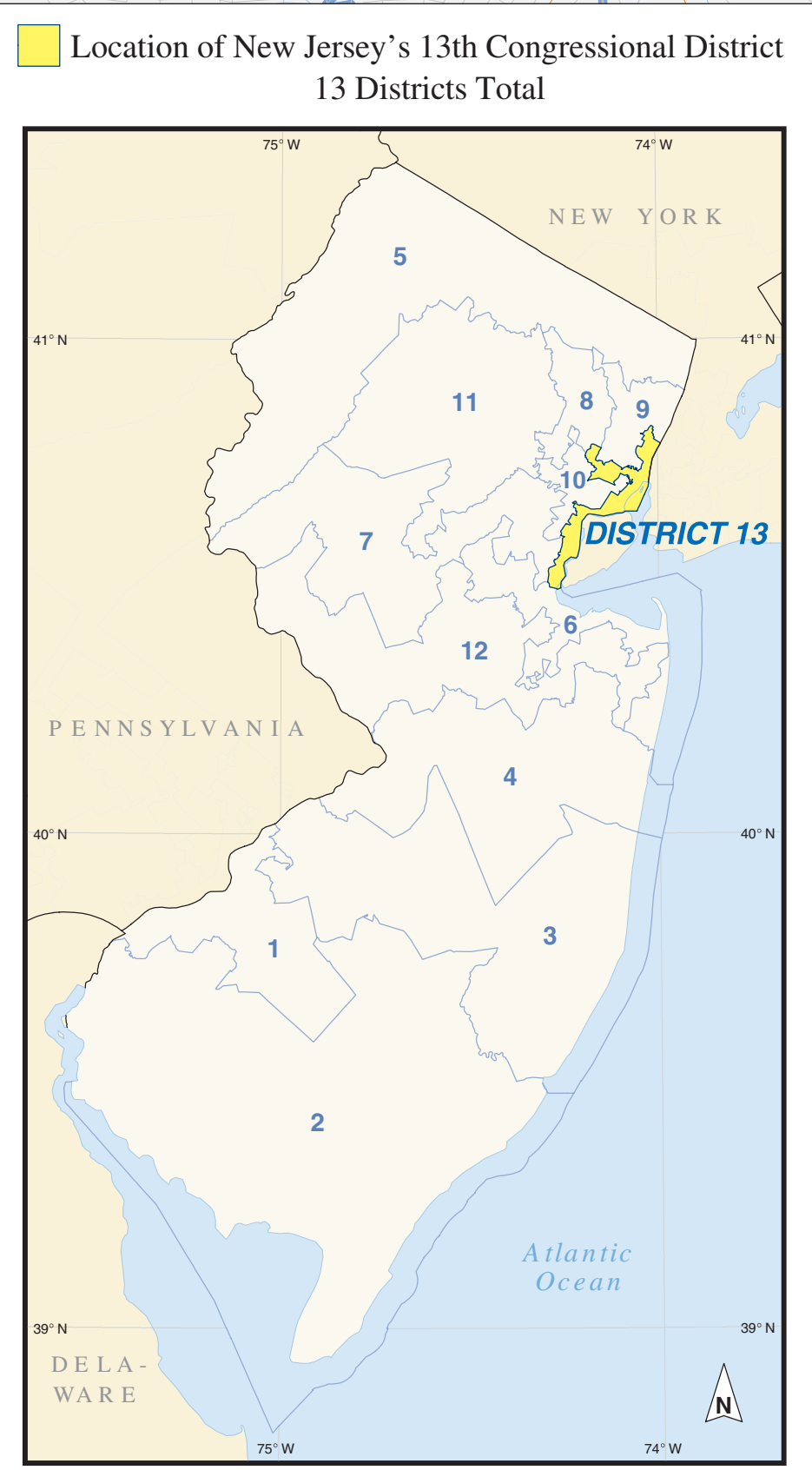
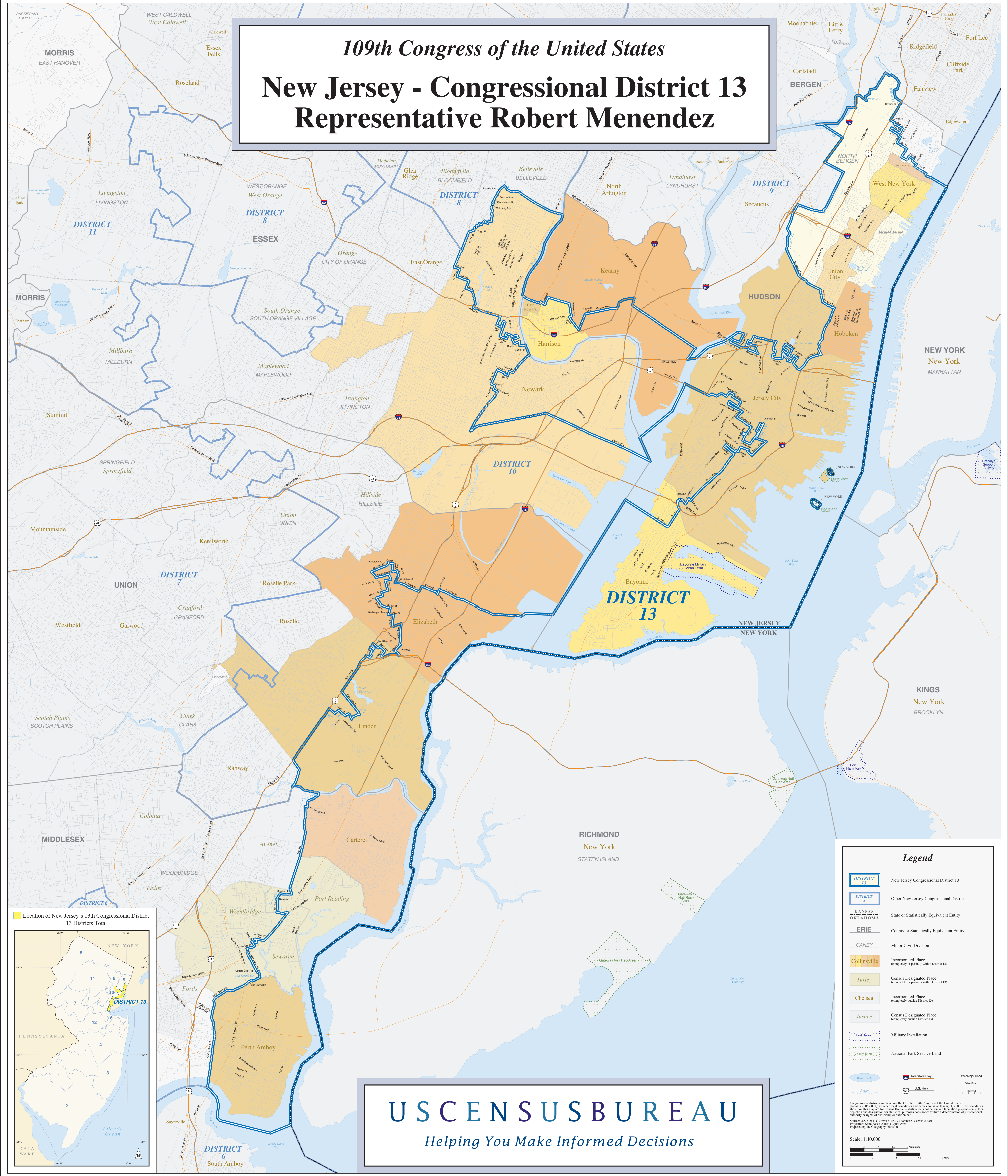


109th Congress of the United States

New Jersey - Congressional District 13

Representative Robert Menendez



USCENSUS BUREAU
Helping You Make Informed Decisions

Legend

- DISTRICT 13 New Jersey Congressional District 13
- DISTRICT 2 Other New Jersey Congressional District
- KANSAS State or Statistically Equivalent Entity
- ERIE County or Statistically Equivalent Entity
- CANEY Minor Civil Division
- Collinsville Incorporated Place (completely or partially within District 13)
- Turley Census Designated Place (completely or partially within District 13)
- Chelsea Incorporated Place (completely outside District 13)
- Justice Census Designated Place (completely outside District 13)
- Fort Belvoir Military Installation
- Yosemite NP National Park Service Land
- Water Body Water Body
- Stream Stream
- Interstate Hwy Interstate Highway
- U.S. Hwy U.S. Highway
- Other Major Road Other Major Road
- Other Road Other Road
- Railroad Railroad

Congressional districts are those in effect for the 109th Congress of the United States (January 2005-2007); all other legal boundaries and names are as of January 1, 2000. The boundaries shown on this map are for Census Bureau statistical data collection and tabulating purposes only; their depiction and delineation for statistical purposes does not constitute a determination of jurisdictional authority or rights of ownership or entitlement.

Source: U.S. Census Bureau's TIGER database (Census 2000) Projected Subcounty Level Equal Area Prepared by the Geography Division

Scale: 1:400,000