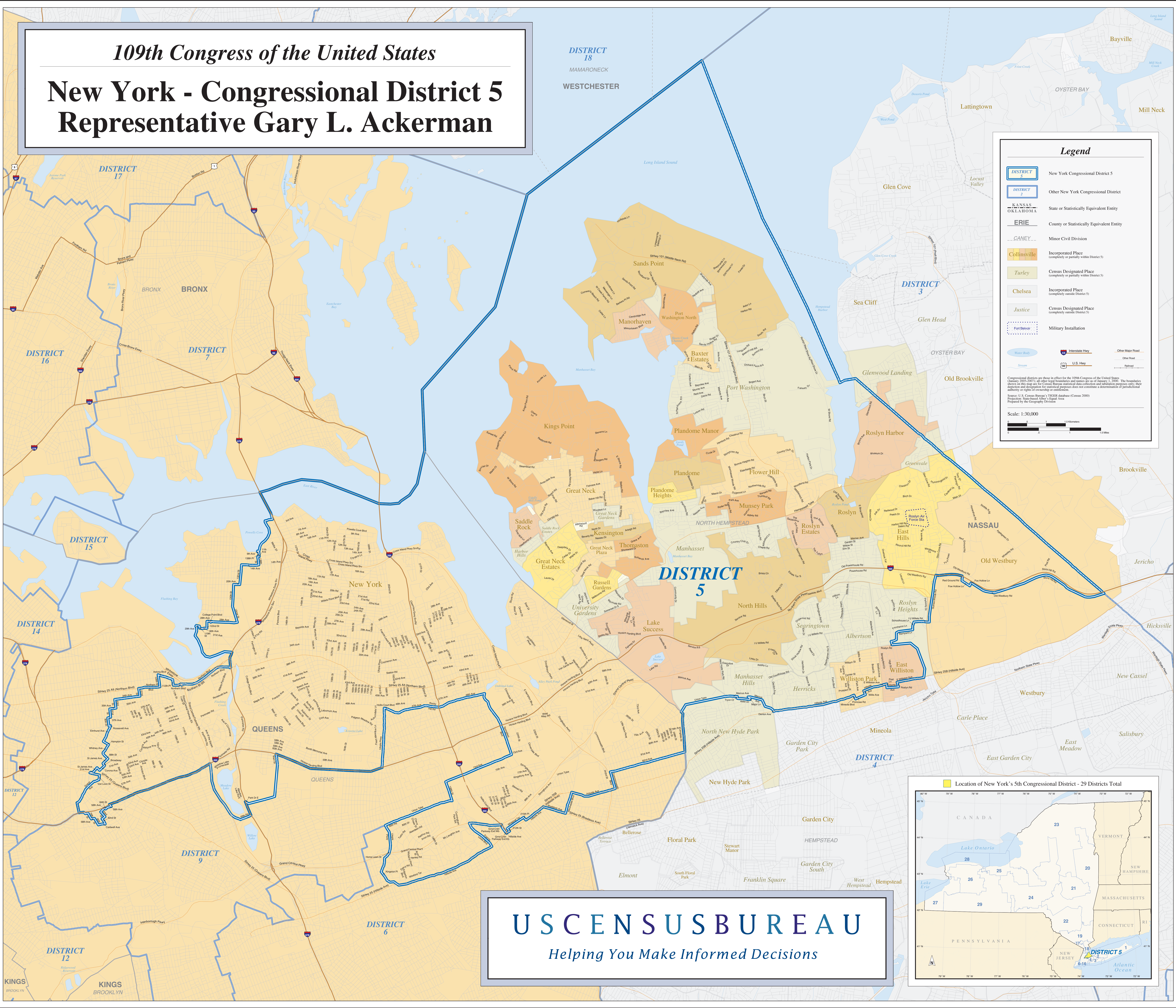


109th Congress of the United States

New York - Congressional District 5

Representative Gary L. Ackerman



Legend

- DISTRICT 5 New York Congressional District 5
- DISTRICT 2 Other New York Congressional District
- KANSAS OKLAHOMA State or Statistically Equivalent Entity
- ERIE County or Statistically Equivalent Entity
- CANAY Minor Civil Division
- Collinsville Incorporated Place (completely or partially within District 5)
- Tulley Census Designated Place (completely or partially within District 5)
- Chelsea Incorporated Place (completely outside District 5)
- Justice Census Designated Place (completely outside District 5)
- Fort Belvoir Military Installation
- Interstate Hwy
- U.S. Hwy
- Other Major Road
- Other Road
- Water Body
- Stream
- Other Water Feature

Congressional districts are those in effect for the 109th Congress of the United States (January 2005-2007) as of the legal boundaries and names as of January 1, 2005. The boundaries shown on this map are for the Census Bureau statistical data collection and tabulation purposes only; their depiction and designation for statistical purposes does not constitute a determination of jurisdictional authority or rights of ownership or control.

Source: U.S. Census Bureau, TIGER database (Census 2000)
Prepared by the Geography Division

Scale: 1:30,000

US CENSUS BUREAU
Helping You Make Informed Decisions

