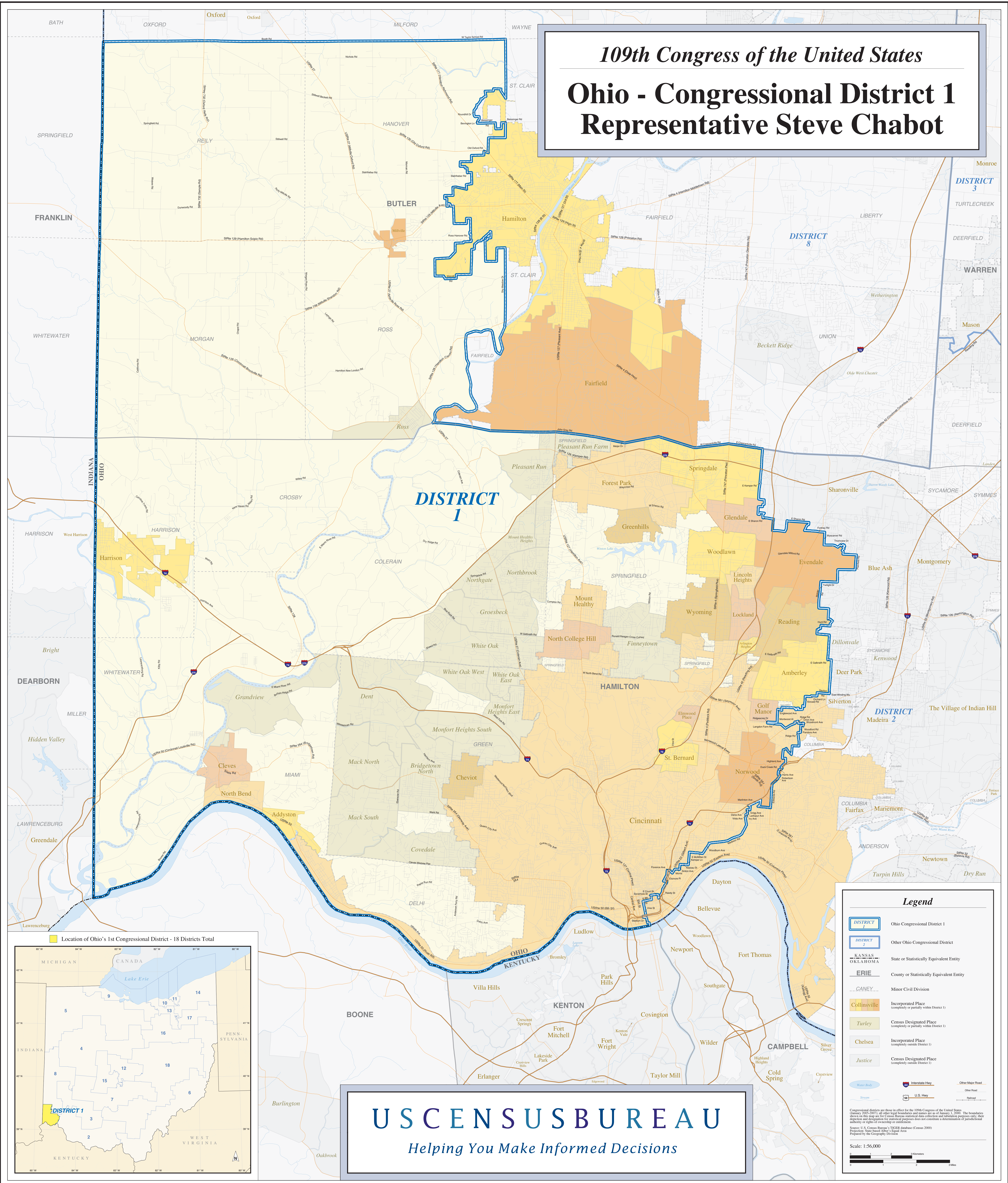


# 109th Congress of the United States

## Ohio - Congressional District 1

### Representative Steve Chabot



**DISTRICT 1**

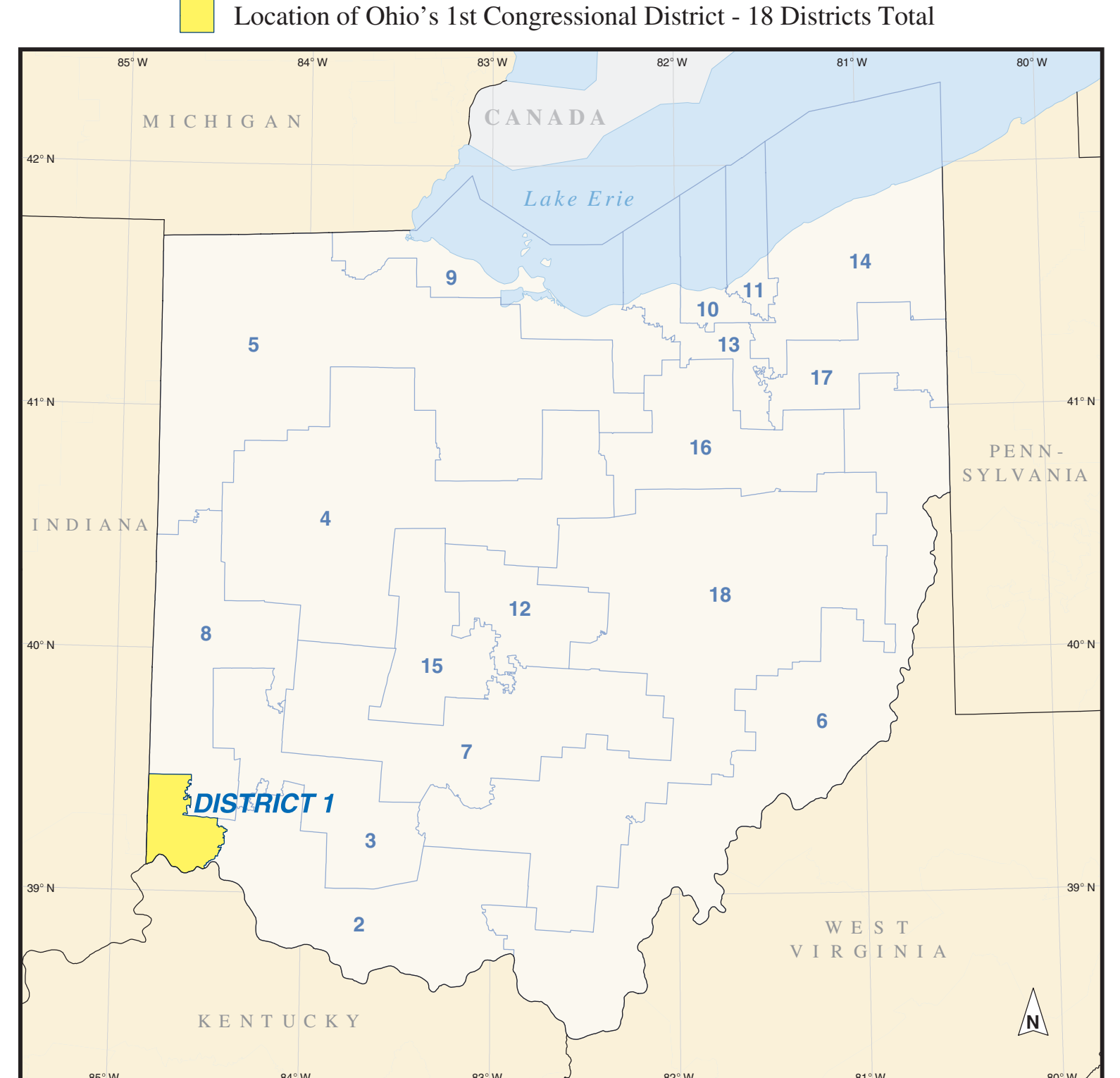
**Legend**

- DISTRICT 1 Ohio Congressional District 1
- DISTRICT 2 Other Ohio Congressional District
- KANSAS State or Statistically Equivalent Entity
- OKLAHOMA State or Statistically Equivalent Entity
- ERIE County or Statistically Equivalent Entity
- CANEY Minor Civil Division
- Collinsville Incorporated Place (completely or partially within District 1)
- Turley Census Designated Place (completely or partially within District 1)
- Chelsea Incorporated Place (completely outside District 1)
- Justice Census Designated Place (completely outside District 1)
- Water Body Interstate Highway
- Stream U.S. Highway
- Other Major Road Other Road
- Other Road Railroad

Congressional districts are those in effect for the 109th Congress of the United States (January 2005-2007); all other legal boundaries and names are as of January 1, 2000. The boundaries shown on this map are for Census Bureau statistical data collection and tabulation purposes only; their accuracy or suitability for statistical purposes does not constitute a determination of jurisdictional authority or rights of ownership or control.

Source: U.S. Census Bureau's TIGER database (Census 2000)  
 Projected: State Street / Other / Legal Area  
 Prepared by the Geography Division

Scale: 1:56,000



**US CENSUS BUREAU**  
*Helping You Make Informed Decisions*