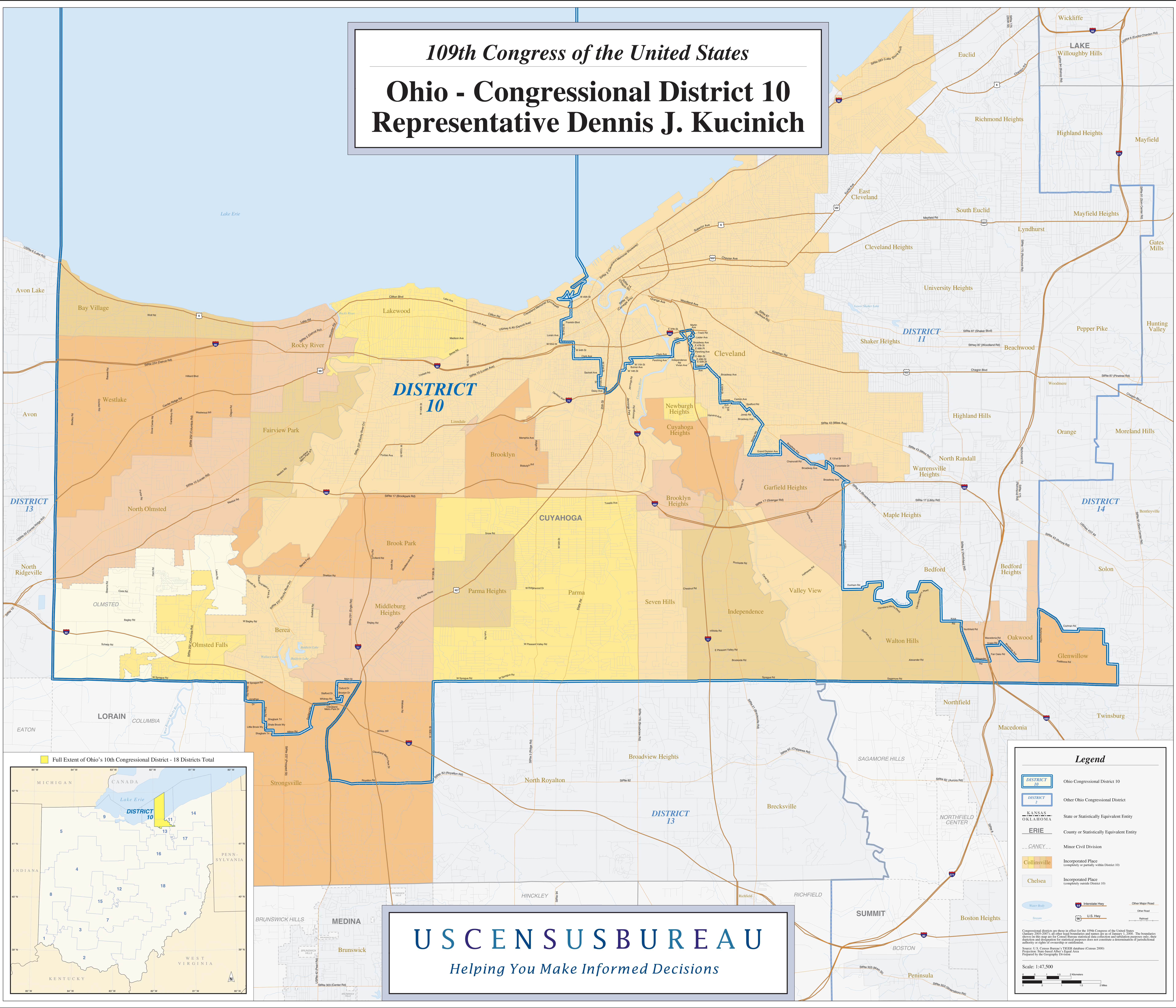


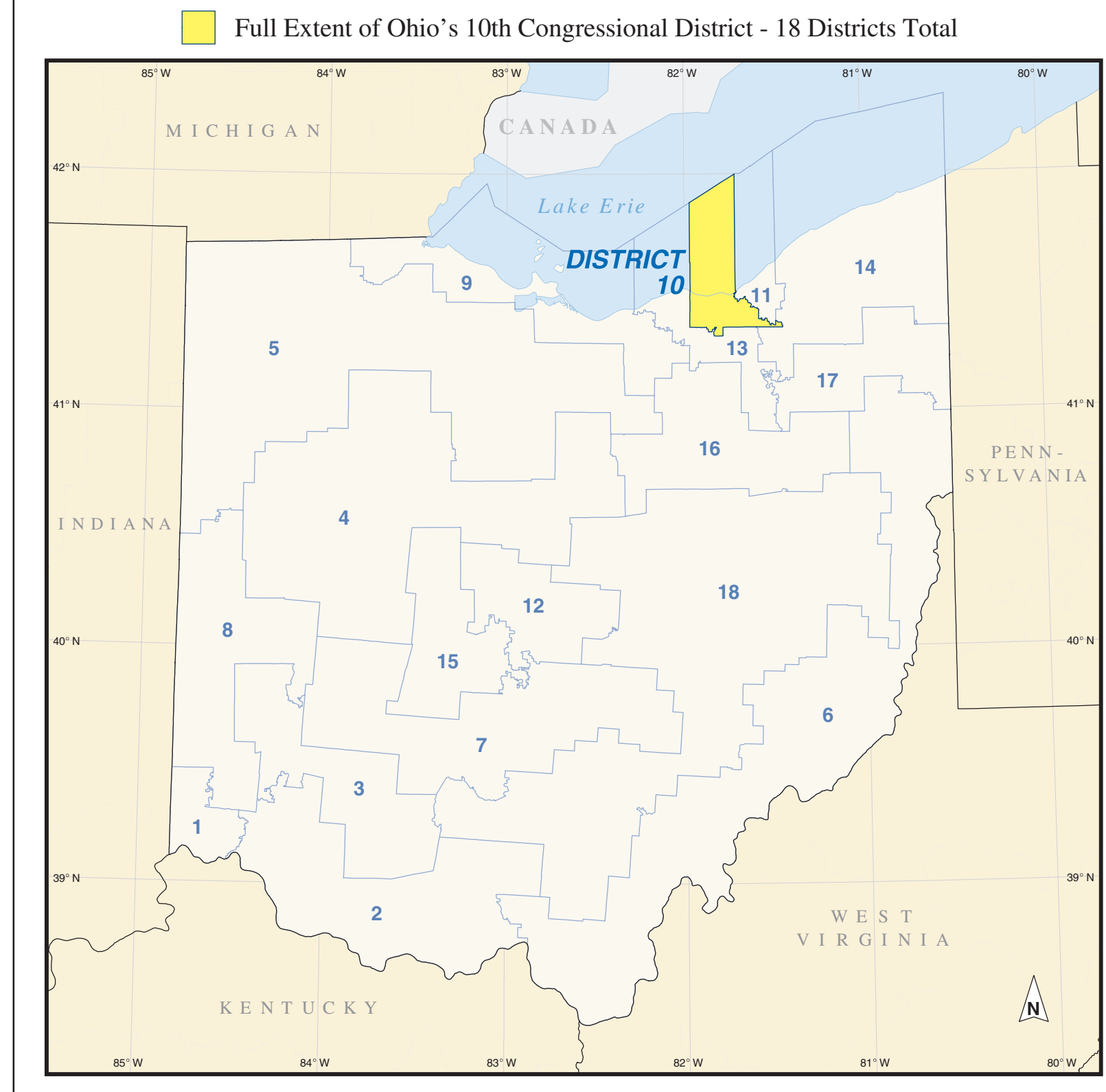
109th Congress of the United States

# Ohio - Congressional District 10

Representative Dennis J. Kucinich



**US CENSUS BUREAU**  
*Helping You Make Informed Decisions*



**Legend**

- DISTRICT 10** (Yellow box): Ohio Congressional District 10
- DISTRICT 2** (Blue box): Other Ohio Congressional District
- KANSAS, OKLAHOMA** (Dashed line): State or Statistically Equivalent Entity
- ERIE** (Dashed line): County or Statistically Equivalent Entity
- CANEY** (Dotted line): Minor Civil Division
- Collinsville** (Yellow box): Incorporated Place (completely or partially within District 10)
- Chelsea** (Yellow box): Incorporated Place (completely outside District 10)
- Water Body** (Blue area): Water Body
- Stream** (Blue line): Stream
- I-76** (Thick red line): Interstate Hwy
- U.S. Hwy** (Thin red line): U.S. Hwy
- Other Major Road** (Thin red line): Other Major Road
- Other Road** (Thin grey line): Other Road
- Railroad** (Black line): Railroad

Congressional districts are shown in effect for the 109th Congress of the United States (January 2005-2007). All other boundaries and names are as of January 1, 2000. The boundaries shown on this map are for Census Bureau statistical data collection and tabulation purposes only; they do not constitute a determination of jurisdictional authority or rights of ownership or control.

Source: U.S. Census Bureau, 2000 Census, Equal Area Population, State-based APO's, Equal Area Prepared by the Geography Division

Scale: 1:47,500