

109th Congress of the United States

Pennsylvania - Congressional District 1

Representative Robert A. Brady

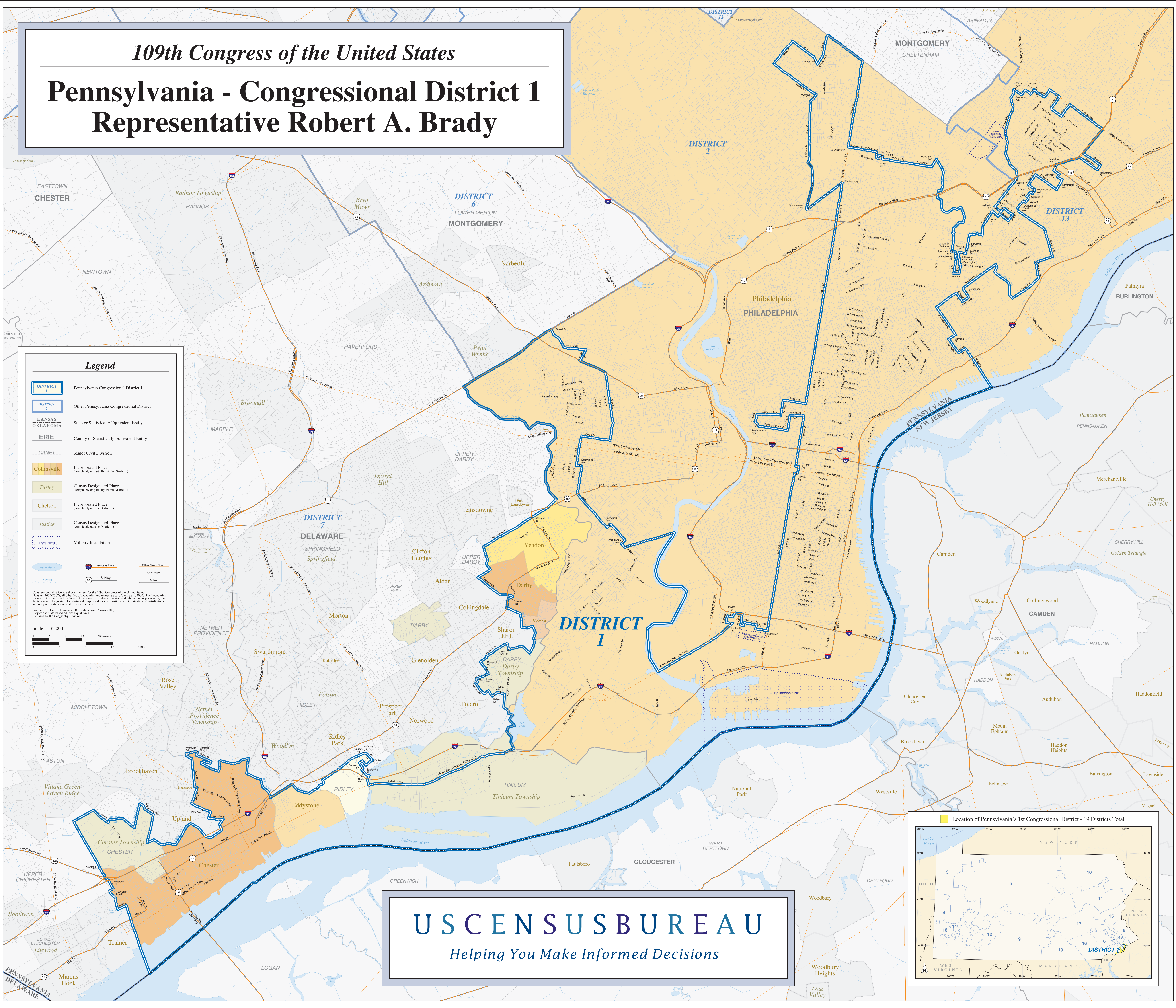
Legend

- DISTRICT 1 Pennsylvania Congressional District 1
- DISTRICT 2 Other Pennsylvania Congressional District
- KANSAS
OKLAHOMA State or Statistically Equivalent Entity
- ERIE County or Statistically Equivalent Entity
- CANBY Minor Civil Division
- Collinsville Incorporated Place (completely or partially within District 1)
- Turley Census Designated Place (completely or partially within District 1)
- Chelsea Incorporated Place (completely outside District 1)
- Justice Census Designated Place (completely outside District 1)
- Fort Belvoir Military Installation
- Water Body Water Body
- Interstate Hwy Interstate Highway
- U.S. Hwy U.S. Highway
- Other Major Road Other Major Road
- Other Road Other Road
- Railroad Railroad

Congressional districts are those in effect for the 109th Congress of the United States (January 2005-2007); all other legal boundaries and names are as of January 1, 2000. The boundaries shown on this map are for Census Bureau statistical data collection and tabulation purposes only; their depiction and designation for statistical purposes does not constitute a determination of jurisdictional authority or rights of ownership or tenancy.

Source: U.S. Census Bureau's TIGER database (Census 2000)
Preparation: Mainland Office's TIGER Area
Prepared by the Geography Division

Scale: 1:35,000



US CENSUS BUREAU
Helping You Make Informed Decisions

