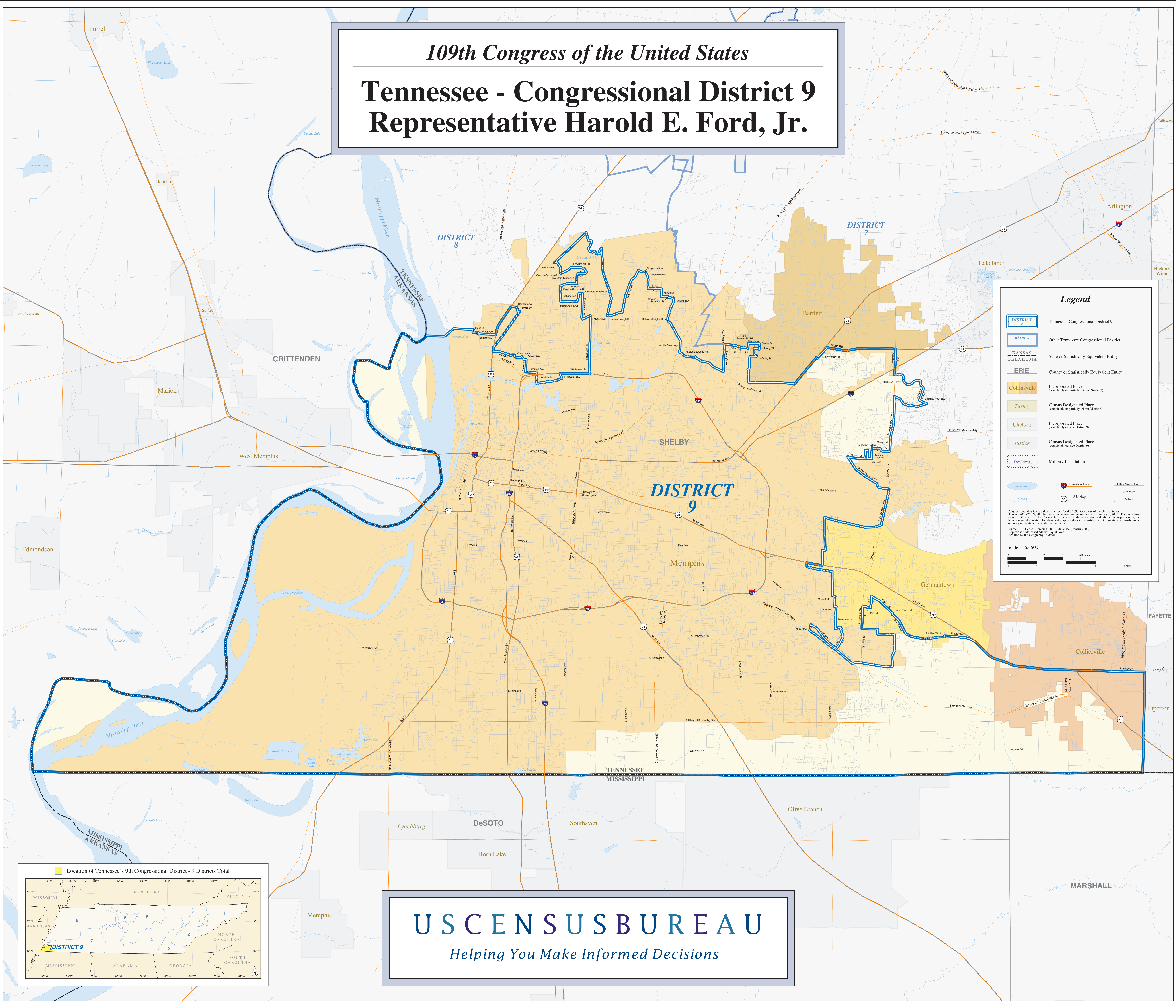


109th Congress of the United States
Tennessee - Congressional District 9
Representative Harold E. Ford, Jr.

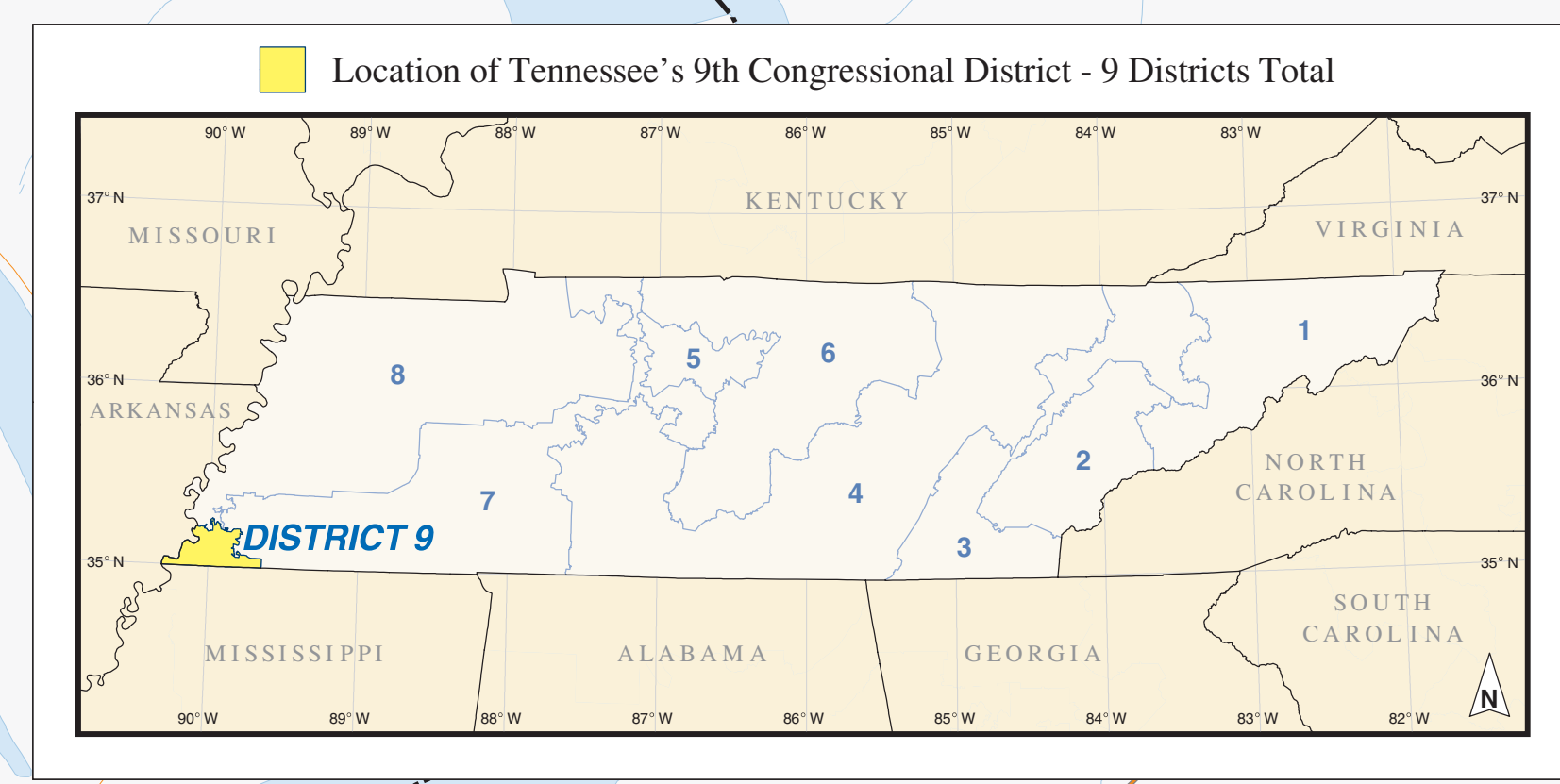


Legend

- DISTRICT 9 Tennessee Congressional District 9
- DISTRICT 7 Other Tennessee Congressional District
- KANSAS OKLAHOMA State or Statistically Equivalent Entity
- ERIE County or Statistically Equivalent Entity
- Collinsville Incorporated Place (completely or partially within District 9)
- Turley Census Designated Place (completely or partially within District 9)
- Chelsea Incorporated Place (completely outside District 9)
- Justice Census Designated Place (completely outside District 9)
- Fort Belvoir Military Installation
- Water Body Water Body
- Stream Stream
- 75 Interstate Hwy
- 55 U.S. Hwy
- Other Major Road Other Major Road
- Other Road Other Road
- Railroad Railroad

Congressional districts are those in effect for the 109th Congress of the United States (January 2005-2007); all other legal boundaries and names are as of January 1, 2000. The boundaries shown on this map are for Census Bureau statistical data collection and tabulation purposes only; their depiction and description for statistical purposes does not constitute a determination of jurisdictional authority or rights of ownership or control.
 Source: U.S. Census Bureau's TIGER database (Census 2000)
 Projection: StatePlane-Alberta Equal Area
 Prepared by the Geography Division

Scale: 1:63,500



USCENSUSBUREAU
Helping You Make Informed Decisions