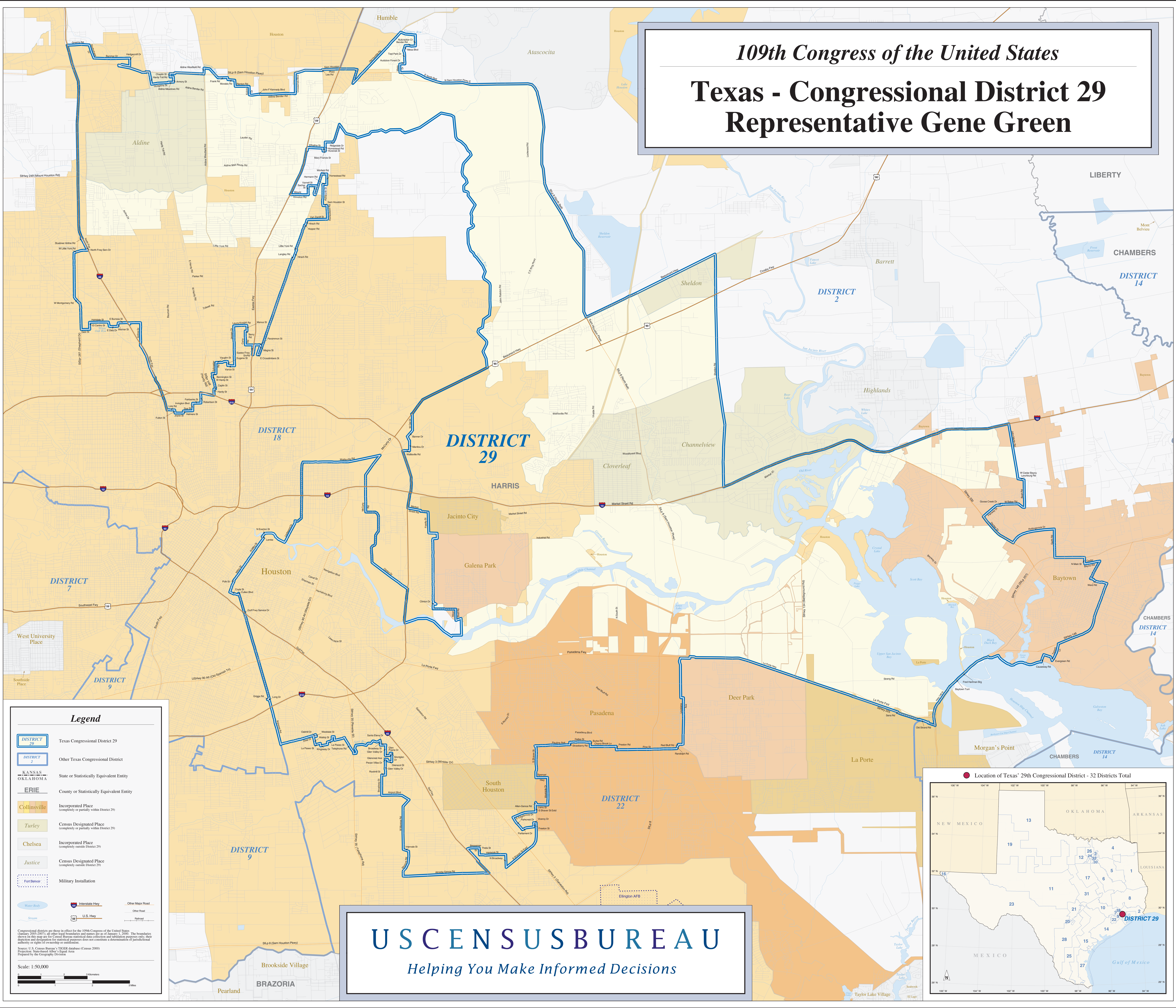


# 109th Congress of the United States

## Texas - Congressional District 29

### Representative Gene Green



**Legend**

- DISTRICT 29** (Blue outline): Texas Congressional District 29
- DISTRICT 2** (Blue outline): Other Texas Congressional District
- KANSAS, OKLAHOMA** (Grey): State or Statistically Equivalent Entity
- ERIE** (Grey): County or Statistically Equivalent Entity
- Collinsville** (Orange): Incorporated Place (completely or partially within District 29)
- Turley** (Light Green): Census Designated Place (completely or partially within District 29)
- Chelsea** (Light Green): Incorporated Place (completely outside District 29)
- Justice** (Light Green): Census Designated Place (completely outside District 29)
- Fort Belvoir** (Dotted): Military Installation
- Water Body** (Blue): Water Body
- Stream** (Blue): Stream
- Interstate Hwy** (Red/Blue): Interstate Hwy
- U.S. Hwy** (Red): U.S. Hwy
- Other Major Road** (Grey): Other Major Road
- Other Road** (Grey): Other Road
- Railroad** (Grey): Railroad

Congressional districts are those in effect for the 109th Congress of the United States (January 2005-2007), unless other legal resolutions are passed as of January 1, 2006. The boundaries shown on this map are for Census Bureau statistical data collection and tabulation purposes only; their definition and designation for statistical purposes does not constitute a determination of jurisdictional authority or rights of ownership or certification.

Source: U.S. Census Bureau's 2000 Census (Census 2000) Projective, Statelevel, Alter a Equal Area Prepared by the Geography Division

Scale: 1:50,000

0 1 2 3 Miles

**USCENSUSBUREAU**  
*Helping You Make Informed Decisions*

