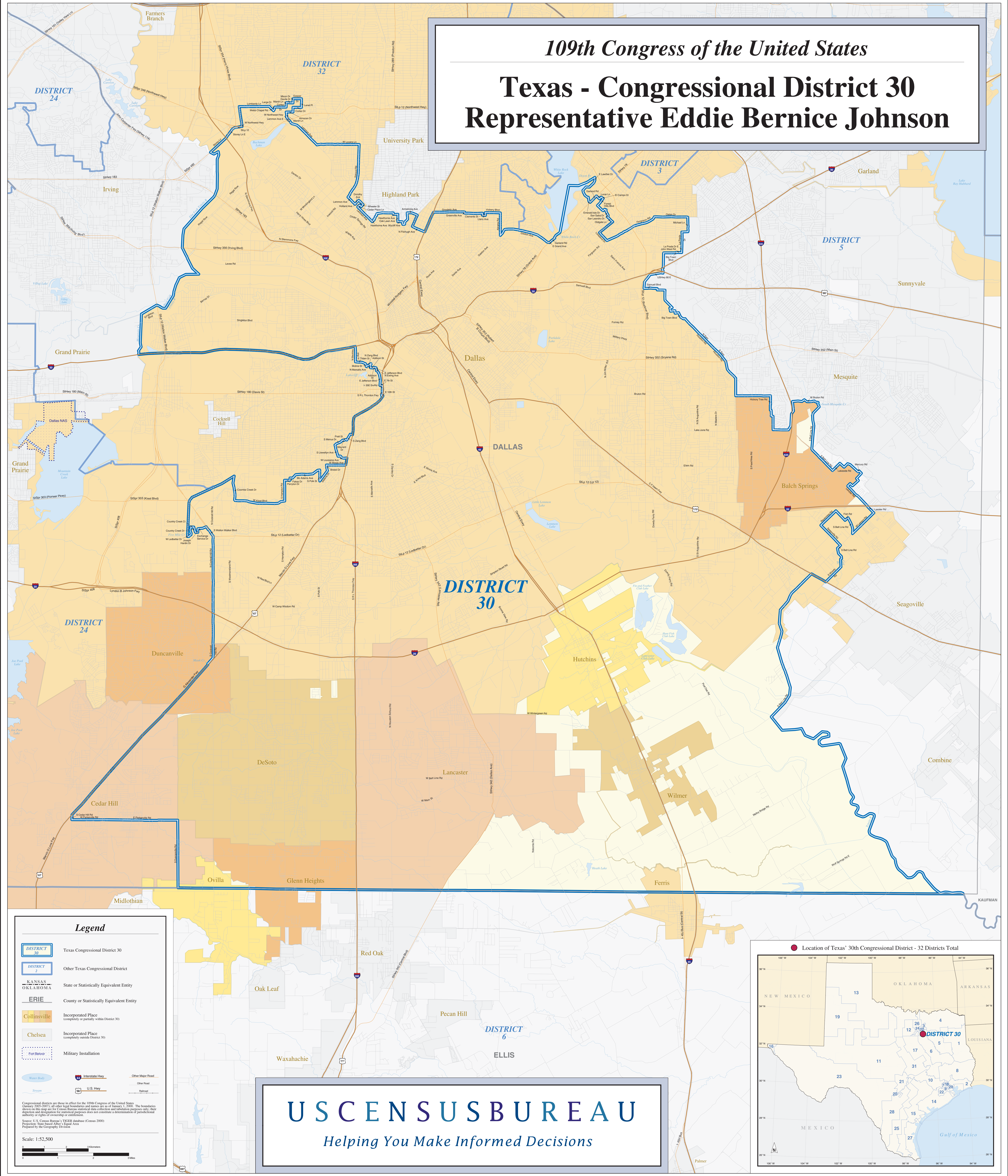


109th Congress of the United States

Texas - Congressional District 30

Representative Eddie Bernice Johnson



Legend

- DISTRICT 30 Texas Congressional District 30
- DISTRICT 3 Other Texas Congressional District
- KANSAS
OKLAHOMA State or Statistically Equivalent Entity
- ERIE County or Statistically Equivalent Entity
- Collinsville Incorporated Place (completely or partially within District 30)
- Chelsea Incorporated Place (completely outside District 30)
- Fort Belvoir Military Installation
- Water Body Water Body
- Interstate Highway
- Other Major Road
- Other Road
- U.S. Hwy
- Right-of-Way

Congressional districts are those in effect for the 109th Congress of the United States (January 2005-2007); all other legal boundaries and names are as of January 1, 2000. The boundaries shown on this map are for Census Bureau statistical data collection and tabulation purposes only. They do not constitute a determination of jurisdictional authority or rights of ownership or entitlement. Source: U.S. Census Bureau's TIGER database (Census 2000) Projection: State Street Map's Equal Area Prepared by the Geography Division

Scale: 1:52,500

US CENSUS BUREAU
Helping You Make Informed Decisions

