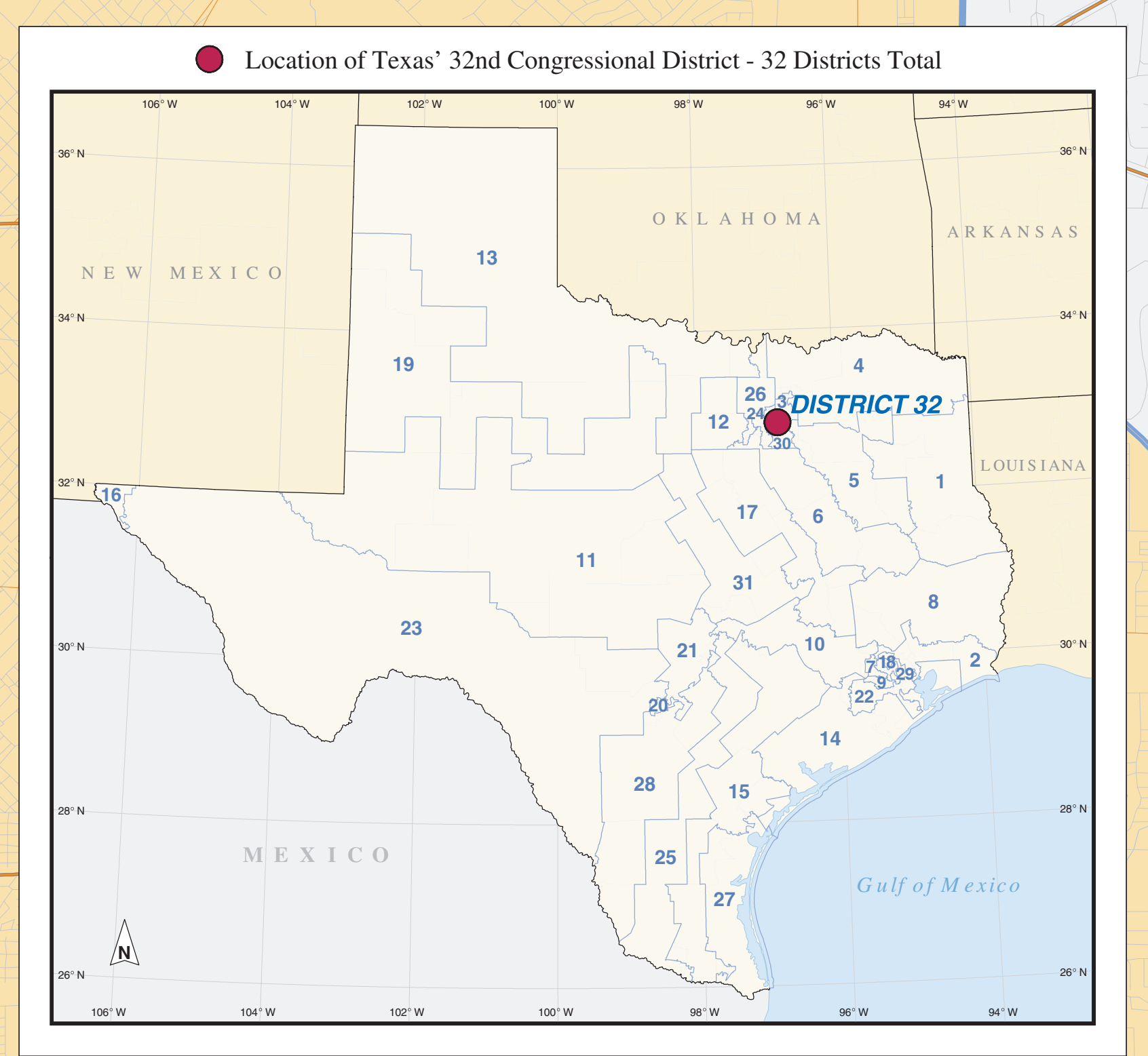
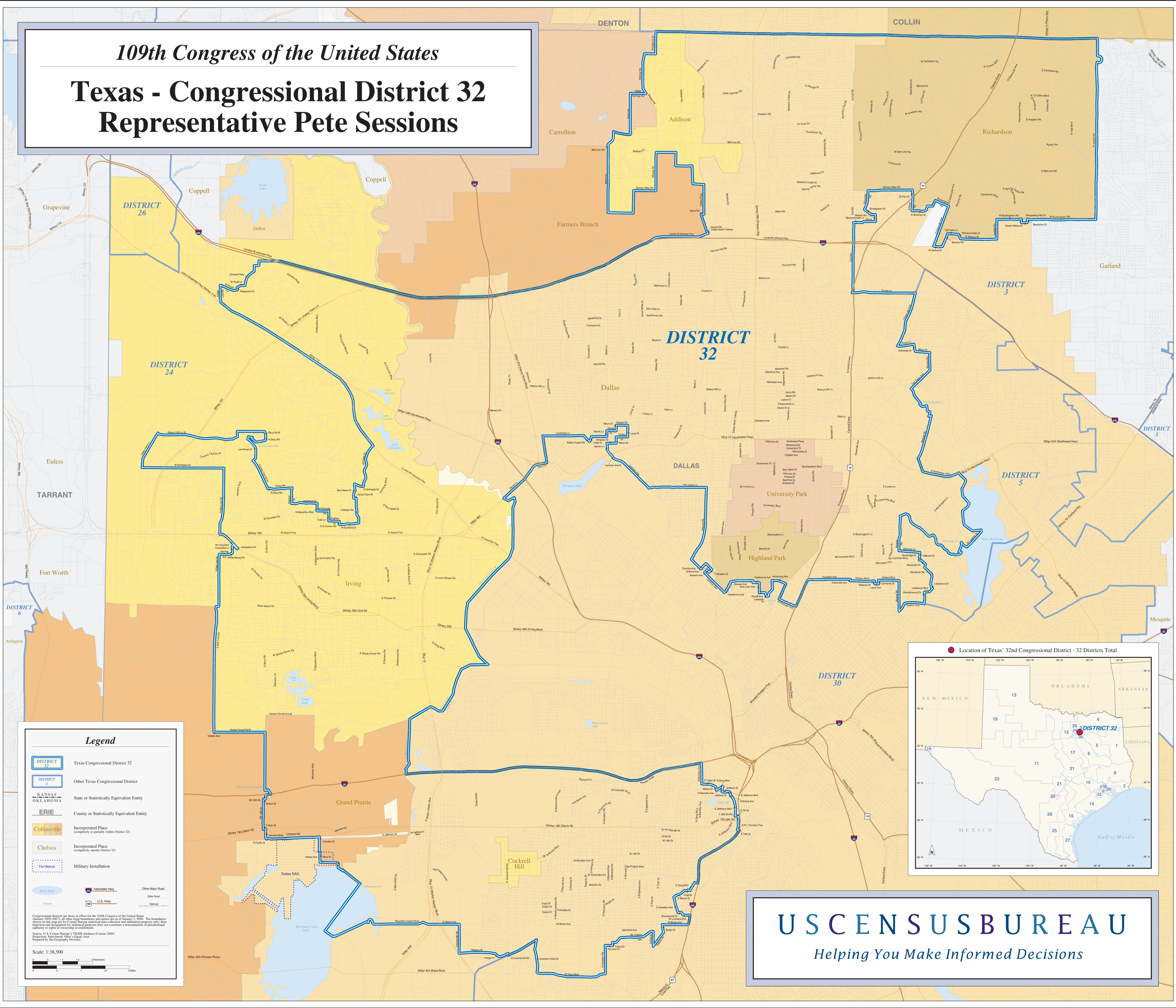


109th Congress of the United States

Texas - Congressional District 32

Representative Pete Sessions



Legend

- DISTRICT 32 Texas Congressional District 32
- DISTRICT 2 Other Texas Congressional District
- KANSAS
OKLAHOMA State or Statistically Equivalent Entity
- ERIE County or Statistically Equivalent Entity
- Collinsville Incorporated Place (completely or partially within District 32)
- Chelsea Incorporated Place (completely outside District 32)
- Fort Belvoir Military Installation
- Interstate Hwy
- Other Major Road
- U.S. Hwy
- Other Road

Congressional districts are those in effect for the 109th Congress of the United States (January 2005-2007); all other legal boundaries and names are as of January 1, 2000. The boundaries shown on this map are for Census Bureau statistical data collection and tabulation purposes only; their depiction and description for electoral purposes does not constitute a determination of jurisdictional authority or rights of ownership or control.

Source: U.S. Census Bureau, "WICR" database (© Census 2000)
Projection: State-based Albers Equal Area
Prepared by the Geography Division

Scale: 1:38,500

USCENSUSBUREAU
Helping You Make Informed Decisions