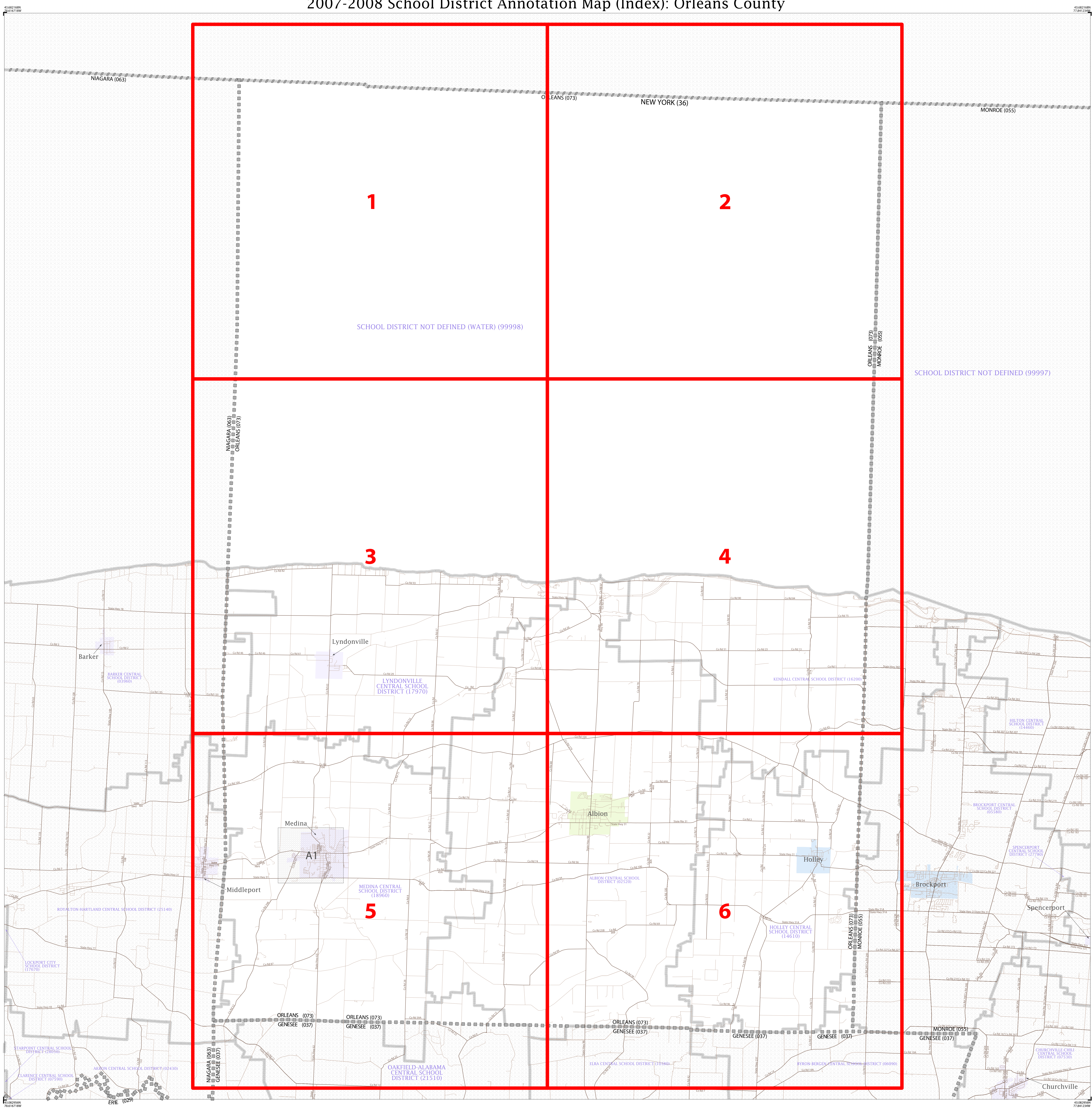


2007-2008 School District Annotation Map (Index): Orleans County



LEGEND

SYMBOL	NAME STYLE
	ELEMENTARY SCHOOL DISTRICT
	SECONDARY SCHOOL DISTRICT
	UNIFIED SCHOOL DISTRICT
	AMERICAN INDIAN RESERVATION
	STATE
	COUNTY
	Minor Civil Division (MCD)
	Incorporated Place

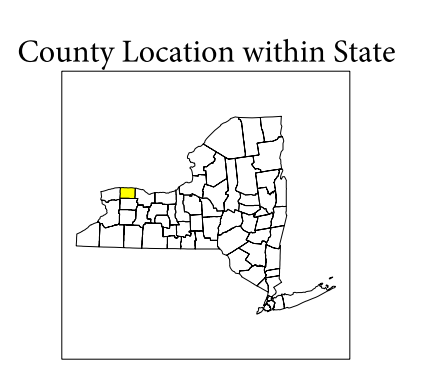
FEATURES

	Interstate or U.S. Highway		Roadway		Nonvisible Boundary
	State or County Highway		Pipeline, Powerline, or Lift		Stream/Reservoir
	Other Road, Trail, Walkway, Service or Ferry		Ridge Line or Fence Line		Watercourse Stream
	Military		Cemetery		Wetland
	Golf Course		National Park / Park		Water
	Inset Area		Out Area		Water

Where state and county, or state and MCD, boundaries coincide only the state boundaries are shown.

CODE UNIFIED SCHOOL DISTRICT NAME (MAP SHEET)

0250	ALBION CENTRAL SCHOOL DISTRICT (3, 4, 5, 6)
0250	ALBION CENTRAL SCHOOL DISTRICT (3, 5)
0250	BARKER CENTRAL SCHOOL DISTRICT (3, 5)
0250	BROCKPORT CENTRAL SCHOOL DISTRICT (6)
06090	BYRON-BERGEN CENTRAL SCHOOL DISTRICT (6)
14610	HOLLEY CENTRAL SCHOOL DISTRICT (6)
16300	KENDALL CENTRAL SCHOOL DISTRICT (4, 6)
17970	LYNDONVILLE CENTRAL SCHOOL DISTRICT (3, 4, 5)
18960	MEDINA CENTRAL SCHOOL DISTRICT (3, 5, A1)
21510	OAKFIELD-ALABAMA CENTRAL SCHOOL DISTRICT (5)
25140	ROYALTON-HARTLAND CENTRAL SCHOOL DISTRICT (5)
99998	SCHOOL DISTRICT NOT DEFINED (WATER) (1, 2, 3, 4)



TOTAL SHEETS: 8 (Index 1; Parent 6; Inset 1)

All legal boundaries and names are as of January 1, 2007. The boundaries shown on this map are for Census Bureau statistical data collection and tabulation purposes only; their depiction and designation for statistical purposes does not constitute a determination of jurisdictional authority or rights of ownership or entitlement.
 Source: U.S. Census Bureau's MAINTIGER database
 Projection: State based, Albers Equal Area (www.census.gov/ge/en/www/schdist/sch_dist.html)
 Map created by Geography Division: 24 DEC-07
 U.S. DEPARTMENT OF COMMERCE Economics and Statistics Administration U.S. Census Bureau

