

Number of Inhabitants

A

# NUMBER OF INHABITANTS

## Alabama

### LIST OF TABLES

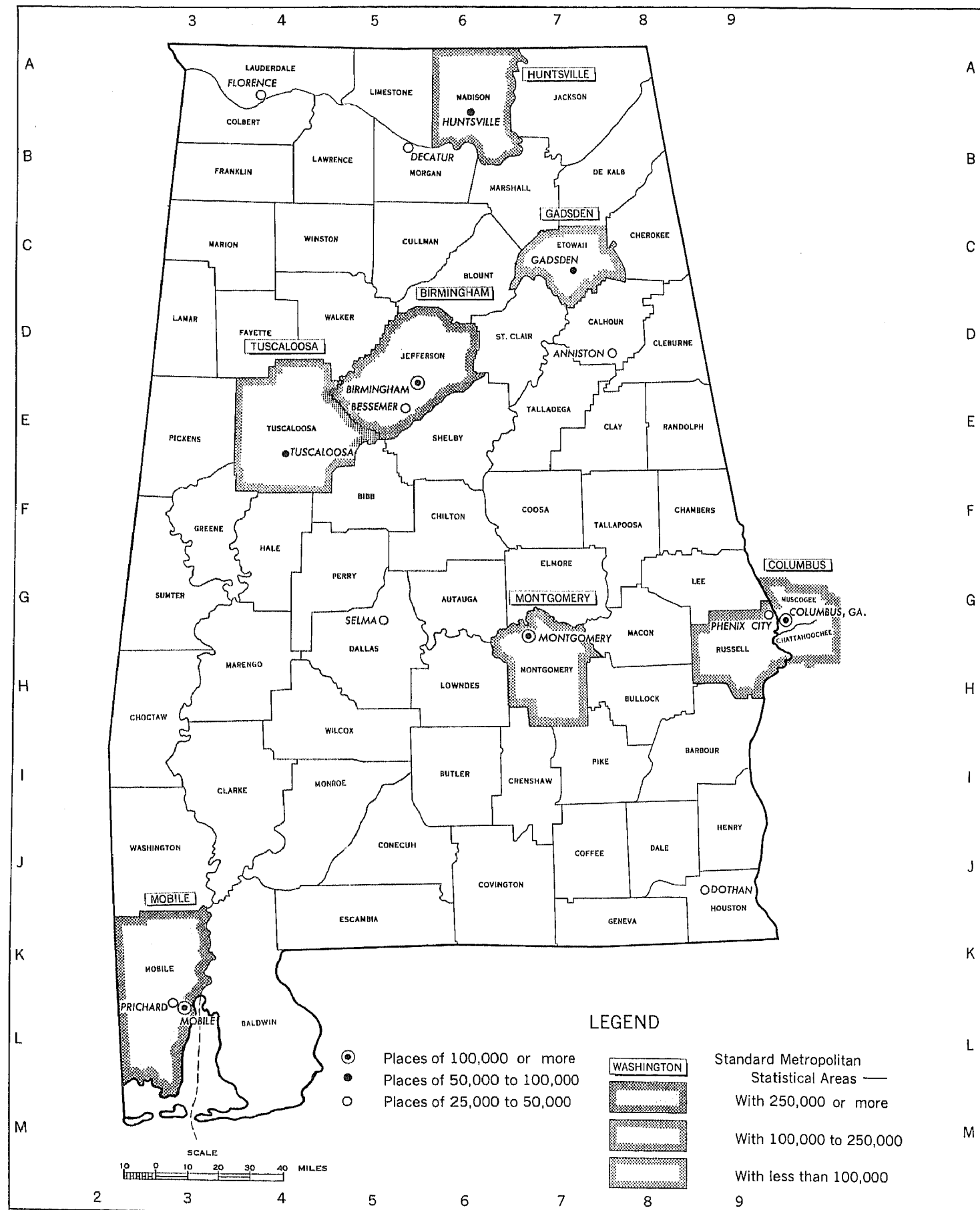
[Page numbers listed here omit the State prefix number which appears as part of the page number for each page. The prefix for this State is 2]

Table	Page
1.—Population of the State, urban and rural: 1800 to 1960.....	7
2.—Population in groups of places according to size: 1960 and 1950.....	7
3.—Population in groups of places according to size: 1900 to 1960.....	8
4.—Population in incorporated and unincorporated places according to size: 1960.....	9
5.—Population of incorporated places of 10,000 or more from earliest census to 1960.....	9
6.—Area and population of counties, urban and rural: 1960 and 1950.....	11
7.—Population of counties, by census county divisions: 1960.....	12
8.—Population of all incorporated places and of unincorporated places of 1,000 or more: 1940 to 1960.....	15
9.—1960 population of areas annexed between 1950 and 1960 by incorporated places having 2,500 inhabitants or more in 1950.....	17
10.—Population of urbanized areas: 1960 and 1950.....	17
11.—Population of standard metropolitan statistical areas: 1960 and 1950.....	18
12.—Population of the State and of standard metropolitan statistical areas, by type of residence: 1960.....	18

### LIST OF MAPS

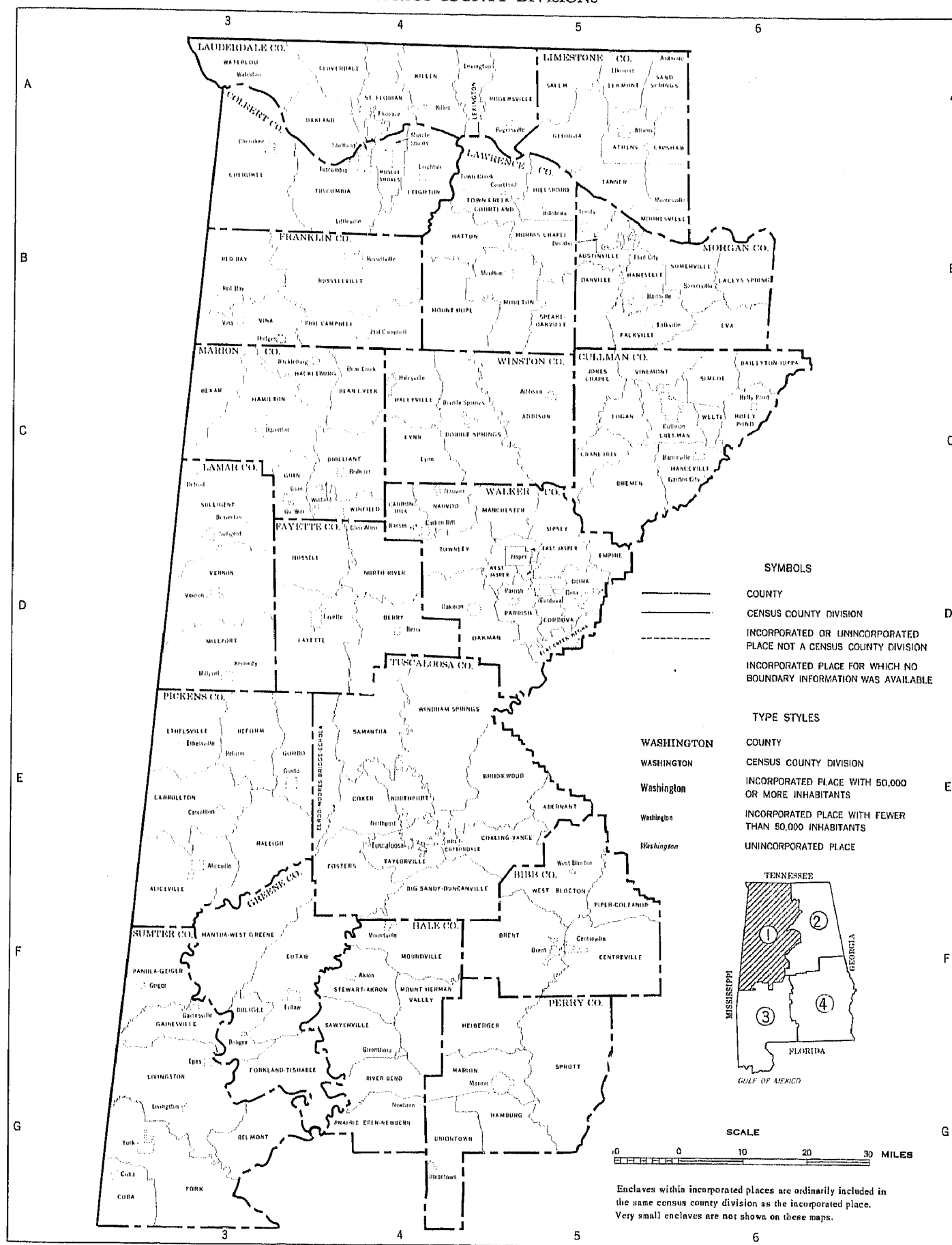
The State, showing counties, places of 25,000 or more, and standard metropolitan statistical areas.....	2
The State, showing census county divisions.....	3
Urbanized areas (separate map for each area).....	19

# ALABAMA—COUNTIES, PLACES OF 25,000 OR MORE, AND STANDARD METROPOLITAN STATISTICAL AREAS

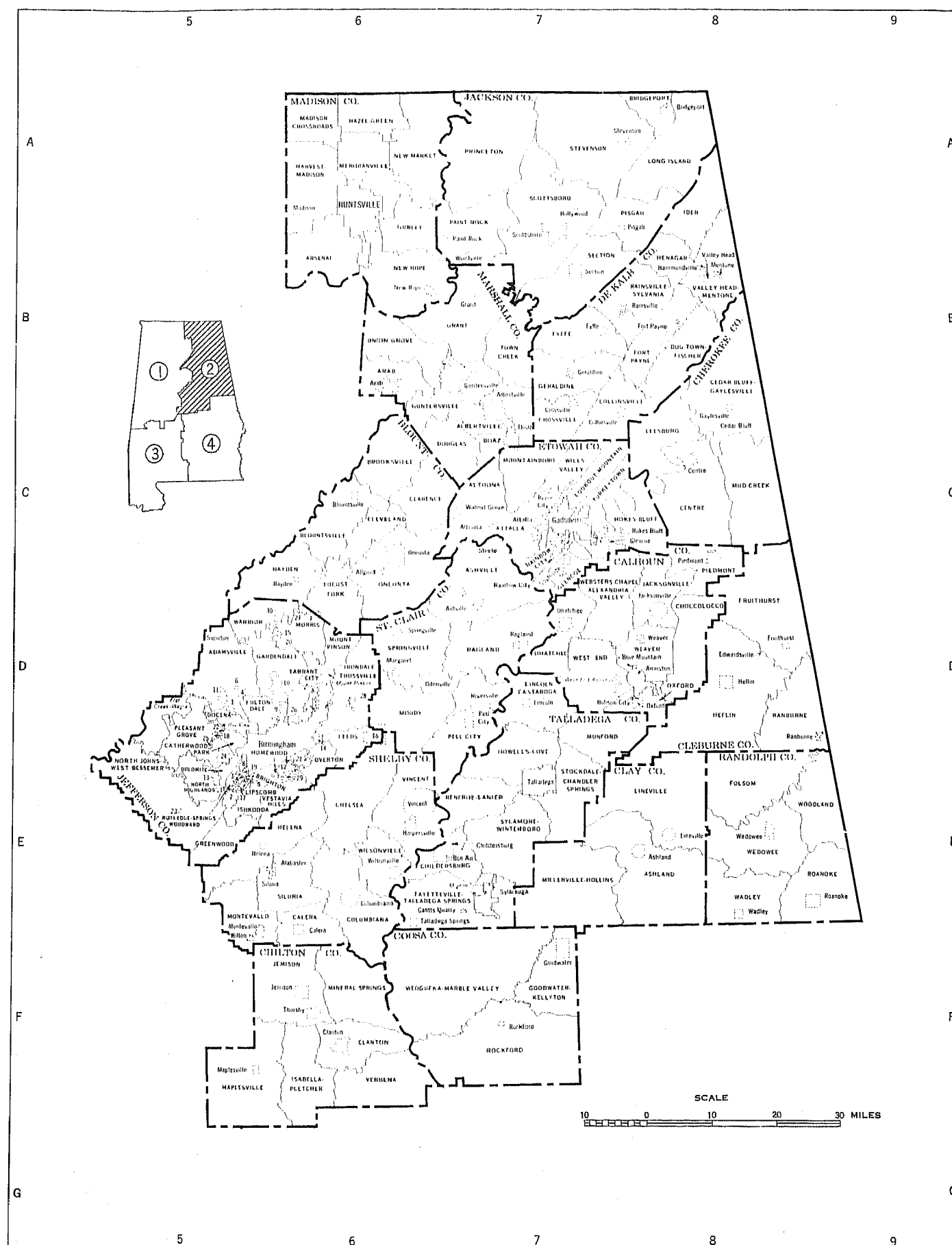


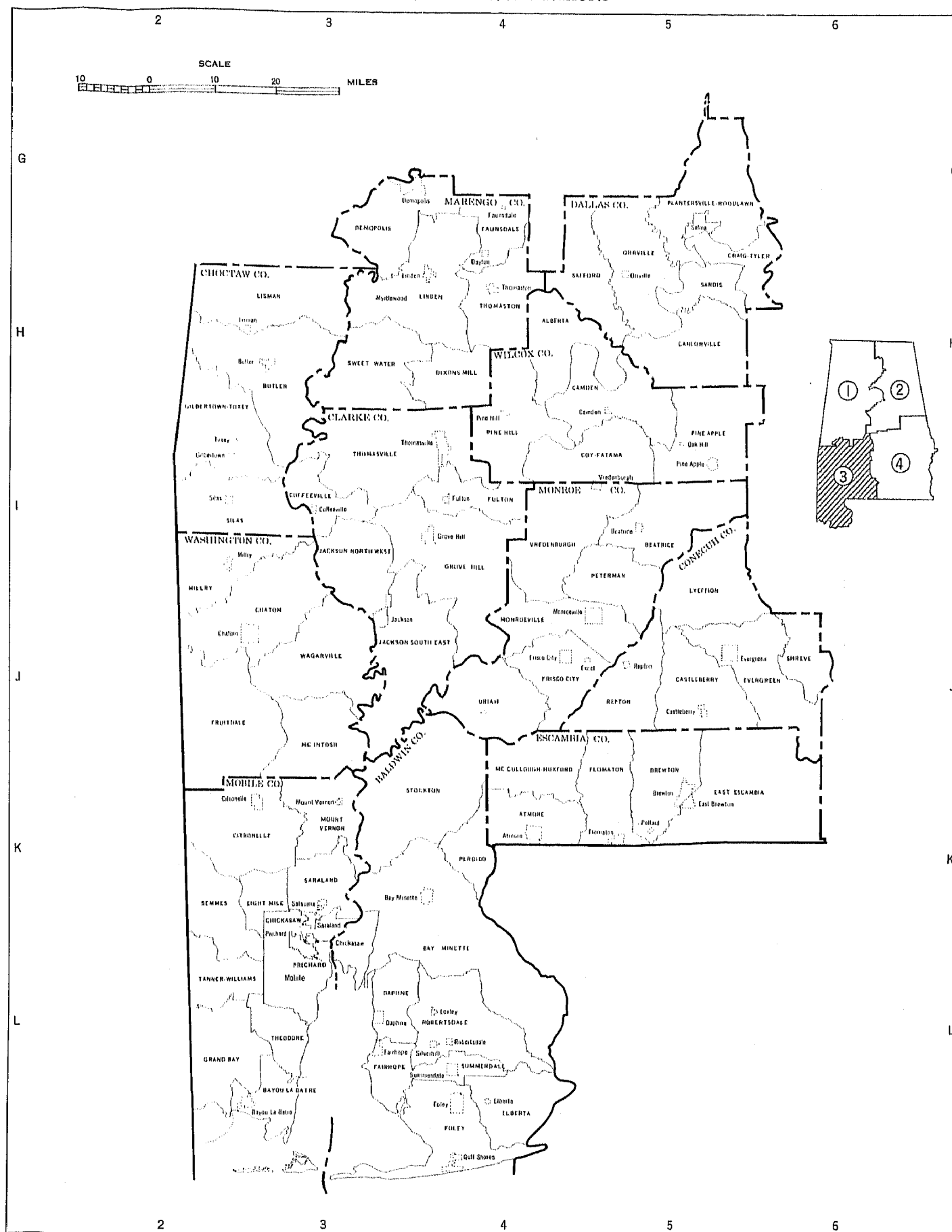
# ALABAMA—SECTION 1

## CENSUS COUNTY DIVISIONS



Large-scale copies of this map may be purchased from Superintendent of Documents, U. S. Government Printing Office, Washington 25, D. C., after April 1, 1961.

ALABAMA—SECTION 2  
CENSUS COUNTY DIVISIONS



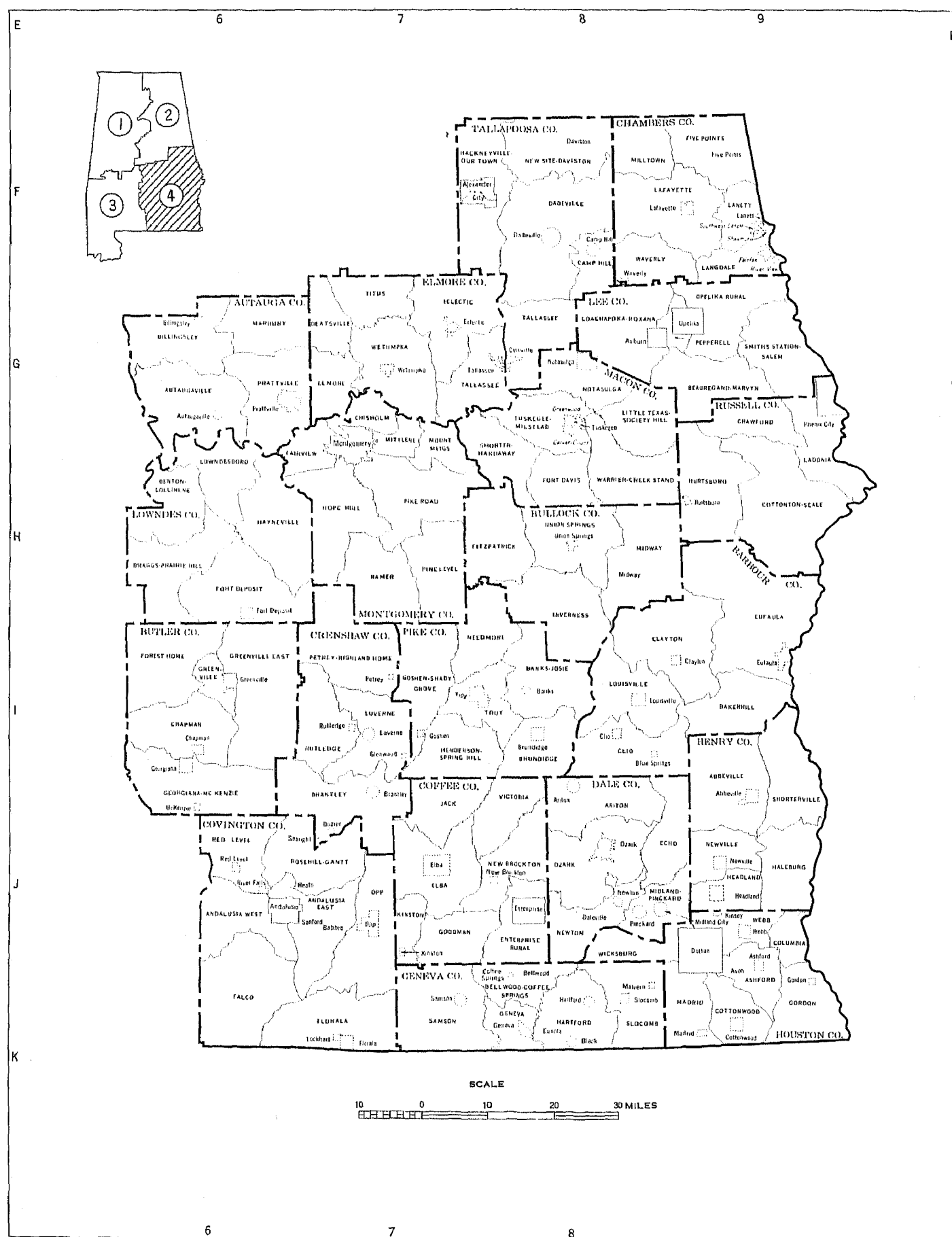


Table 1.—POPULATION OF THE STATE, URBAN AND RURAL: 1800 TO 1960

[For description of current and previous urban definitions, see text. Minus sign (-) denotes decrease]

Census date	The State			Urban territory				Rural territory				Percent of total	
	Population	Increase over preceding census		Number of urban places	Population	Increase over preceding census		Population	Increase over preceding census			Urban	Rural
		Number	Percent			Number	Percent		Number	Percent			
Current urban definition:													
1960 (Apr. 1)	3,266,740	204,997	6.7	109	1,791,721	450,784	33.6	1,479,019	-245,787	-16.3	54.8	45.2	
1950 (Apr. 1)	3,061,743	228,782	8.1	85	1,340,937	...	...	1,720,806	...	...	43.8	56.2	
Previous urban definition:													
1960 (Apr. 1)	3,266,740	204,997	6.7	105	1,689,417	464,302	37.6	1,577,323	-295,211	-18.0	51.7	48.3	
1950 (Apr. 1)	3,061,743	228,782	8.1	76	1,228,209	372,268	43.5	1,833,534	-143,436	-7.3	40.1	59.9	
1940 (Apr. 1)	2,832,961	186,713	7.1	59	855,941	111,688	19.0	1,977,020	75,645	3.9	30.2	69.8	
1930 (Apr. 1)	2,646,248	208,074	12.7	53	744,273	234,956	46.1	1,901,975	63,118	3.4	28.1	71.9	
1920 (Jan. 1)	2,348,174	210,081	9.8	39	509,317	138,886	37.5	1,838,857	71,495	4.0	21.7	78.3	
1910 (Apr. 15)	2,138,093	309,396	16.9	28	370,431	153,717	70.9	1,767,662	155,679	9.7	17.3	82.7	
1900 (June 1)	1,828,697	315,296	20.8	27	216,714	64,479	42.4	1,611,983	220,817	18.4	11.9	88.1	
1890 (June 1)	1,513,401	250,896	19.9	19	152,235	83,717	132.2	1,361,166	167,199	14.0	10.1	89.9	
1880 (June 1)	1,262,505	265,513	26.6	7	68,518	5,818	9.3	1,193,987	259,695	27.8	5.4	94.6	
1870 (June 1)	996,992	32,791	3.4	7	62,700	13,799	28.2	934,292	16,992	2.1	6.3	93.7	
1860 (June 1)	964,201	192,578	25.0	5	48,901	13,722	39.0	915,300	178,856	24.3	5.1	94.9	
1850 (June 1)	771,623	180,867	30.6	4	39,379	22,507	177.6	736,444	158,360	27.4	4.6	95.4	
1840 (June 1)	590,756	281,229	90.9	1	12,672	9,478	296.7	578,084	271,751	88.7	2.1	97.9	
1830 (June 1)	309,527	181,626	142.0	1	3,194	3,194	...	306,333	178,433	139.5	1.0	99.0	
1820 (Aug. 7)	127,901	118,855	1,313.9	...	...	...	...	127,901	118,855	1,313.9	...	100.0	
1810 (Aug. 6)	9,046	7,796	623.7	...	...	...	...	9,046	7,796	623.7	...	100.0	
1800 (Aug. 4)	3,250	...	...	...	...	...	...	1,250	...	...	...	100.0	

<sup>1</sup> Includes 87,623 persons in urban territory outside urban places.<sup>2</sup> Includes 79,272 persons in urban territory outside urban places.<sup>3</sup> Population of that part of Mississippi Territory as then constituted taken to form Alabama Territory in 1817.

Table 2.—POPULATION IN GROUPS OF PLACES ACCORDING TO SIZE: 1960 AND 1950

[Percent not shown where less than 0.1]

Type of area and size of place	1960				1950			
	Number of places	Population	Percent of total population	Percent of total	Number of places	Population	Percent of total population	Percent of total
The State	...	3,266,740	100.0	...	...	3,061,743	100.0	...
URBAN								
Total	( <sup>1</sup> )	1,791,721	54.8	100.0	( <sup>2</sup> )	1,340,937	43.8	100.0
Within urbanized areas	...	1,180,721	36.1	65.9	...	761,050	24.9	56.3
Central cities, total	6	871,882	26.7	46.7	3	561,571	18.3	41.9
Cities of 1,000,000 or more	...	...	...	...	...	...	...	...
Cities of 500,000 to 1,000,000	...	...	...	...	...	...	...	...
Cities of 250,000 to 500,000	1	340,887	16.4	19.0	1	224,037	10.6	24.2
Cities of 100,000 to 250,000	2	337,172	16.3	18.6	2	235,534	7.9	17.6
Cities of 50,000 to 100,000	3	193,823	9.9	10.8	...	...	...	...
Cities under 50,000	...	...	...	...	...	...	...	...
Urban fringes, total	...	305,839	9.5	17.2	...	199,479	6.5	14.9
Places of 2,500 or more	19	281,216	6.8	12.3	9	120,207	3.9	9.0
Places of 100,000 or more	...	...	...	...	...	...	...	...
Places of 50,000 to 100,000	...	...	...	...	...	...	...	...
Places of 25,000 to 50,000	3	138,055	3.3	6.0	1	28,445	0.9	5.1
Places of 10,000 to 25,000	4	58,787	1.8	1.3	4	62,362	2.2	5.1
Places of 5,000 to 10,000	4	27,309	0.8	1.5	2	15,930	0.5	1.2
Places of 2,500 to 5,000	8	27,065	0.8	1.5	2	7,470	0.3	0.6
Places under 2,500	3	4,026	0.1	0.2	3	4,669	0.2	0.4
Places of 2,000 to 2,500	1	2,001	0.1	0.1	...	...	...	...
Places of 1,500 to 2,000	...	...	...	...	...	...	...	...
Places of 1,000 to 1,500	1	1,491	...	0.1	1	1,304	...	0.1
Places under 1,000	1	534	...	...	...	...	...	...
Other urban territory	...	63,597	2.6	4.7	...	74,403	2.4	5.5
Outside urbanized areas	84	611,000	18.7	34.1	73	579,887	18.9	43.2
Places of 25,000 or more	5	154,346	4.7	8.6	3	133,187	4.3	10.0
Places of 10,000 to 25,000	11	142,758	4.4	8.0	9	153,840	5.0	11.5
Places of 5,000 to 10,000	23	156,234	4.8	8.8	25	168,415	5.5	12.6
Places of 2,500 to 5,000	45	155,660	4.8	8.7	36	124,436	4.1	9.3
RURAL								
Total	...	1,479,019	45.2	100.0	...	1,720,806	56.2	100.0
Places of 1,000 to 2,500	68	109,506	3.4	7.4	84	131,127	4.2	7.6
Places of 2,000 to 2,500	10	22,413	0.7	1.5	17	36,441	1.3	2.2
Places of 1,500 to 2,000	27	47,969	1.5	3.3	24	60,750	1.3	2.4
Places of 1,000 to 1,500	31	39,124	1.2	2.7	43	51,936	1.7	3.0
Other rural territory	...	1,365,513	41.8	92.6	...	1,589,679	51.9	92.4
URBANIZED AREAS								
Total	7	1,180,721	36.1	100.0	4	761,050	24.9	100.0
Areas of 1,000,000 or more	...	...	...	...	...	...	...	...
Areas of 500,000 to 1,000,000	1	521,330	16.0	44.2	...	...	...	...
Areas of 250,000 to 500,000	1	265,139	8.2	22.7	1	449,314	14.5	58.5
Areas of 100,000 to 250,000	2	170,523	5.2	14.4	3	315,736	10.3	41.5
Areas under 100,000	3	220,729	6.8	16.7	...	...	...	...

<sup>1</sup> There were 109 places of 2,500 or more.<sup>2</sup> There were 85 places of 2,500 or more.

Table 3.—POPULATION IN GROUPS OF PLACES ACCORDING TO SIZE: 1900 TO 1960

Subject and size of place	1960		1950		1940	1930	1920	1910	1900
	Current urban definition	Previous urban definition	Current urban definition	Previous urban definition					
NUMBER OF PLACES									
Urban territory	112	105	88	76	59	53	39	28	27
Places of 2,500 or more	109	105	85	76	59	53	39	28	27
Places of 1,000,000 or more	...	...	...	...	...	...	...	...	...
Places of 500,000 to 1,000,000	...	...	...	...	...	...	...	...	...
Places of 250,000 to 500,000	1	1	1	1	1	1	...	...	...
Places of 100,000 to 250,000	2	2	2	2	...	...	1	1	...
Places of 50,000 to 100,000	3	3	1	1	2	2	1	1	...
Places of 25,000 to 50,000	8	8	3	3	3	...	1	1	3
Places of 10,000 to 25,000	15	15	13	13	8	11	7	4	...
Places of 5,000 to 10,000	27	26	27	26	16	11	8	6	7
Places of 2,500 to 5,000	53	50	38	30	29	28	21	15	17
Places under 2,500	2	...	3	...	...	...	...	...	...
Rural territory	247	242	245	230	220	243	252	233	173
Places of 1,000 to 2,500	63	62	84	69	63	64	64	55	35
Places under 1,000	179	180	161	161	157	179	188	178	138
Cumulative summary:									
Places of 1,000,000 or more	...	...	...	...	...	...	...	...	...
Places of 500,000 or more	...	...	...	...	...	...	...	...	...
Places of 250,000 or more	1	1	1	1	1	1	...	...	...
Places of 100,000 or more	3	3	3	3	1	1	1	1	...
Places of 50,000 or more	6	6	4	4	3	3	2	2	...
Places of 25,000 or more	14	14	7	7	6	3	3	3	3
Places of 10,000 or more	29	29	20	20	14	14	10	7	3
Places of 5,000 or more	56	55	47	46	30	25	18	13	10
Places of 2,500 or more	109	105	85	76	59	53	39	28	27
POPULATION									
Urban territory	1,791,721	1,639,417	1,340,937	1,228,209	855,941	744,273	509,317	370,431	216,714
Places of 2,500 or more	1,704,098	1,689,417	1,261,665	1,228,209	855,941	744,273	509,317	370,431	216,714
Places of 1,000,000 or more	...	...	...	...	...	...	...	...	...
Places of 500,000 to 1,000,000	...	...	...	...	...	...	...	...	...
Places of 250,000 to 500,000	340,887	340,887	326,037	326,037	267,583	259,678	...	...	...
Places of 100,000 to 250,000	337,172	337,172	235,534	235,534	...	...	178,806	132,685	...
Places of 50,000 to 100,000	193,823	193,823	55,725	55,725	156,804	134,281	60,777	51,521	...
Places of 25,000 to 50,000	262,403	262,403	105,907	105,907	89,991	...	43,464	38,136	107,230
Places of 10,000 to 25,000	201,545	201,545	222,211	222,211	131,605	185,622	99,393	47,864	...
Places of 5,000 to 10,000	185,543	180,058	184,345	176,124	107,803	69,654	50,461	41,695	49,462
Places of 2,500 to 5,000	182,725	173,529	131,906	106,671	102,159	95,038	76,516	58,530	60,022
Places under 2,500	4,006	...	4,869	...	...	...	...	...	...
Other urban territory	83,597	...	74,403	...	...	...	...	...	...
Rural territory	1,475,019	1,377,523	1,720,806	1,833,534	1,977,020	1,901,975	1,838,857	1,767,662	1,611,983
Places of 1,000 to 2,500	109,506	100,309	131,127	107,780	99,237	99,268	100,942	84,944	50,105
Places under 1,000	79,642	80,176	74,564	74,564	75,793	81,209	87,693	79,567	55,305
Other rural territory	1,285,871	1,196,838	1,515,115	1,651,190	1,801,990	1,721,498	1,650,262	1,603,151	1,506,573
Cumulative summary:									
Places of 1,000,000 or more	...	...	...	...	...	...	...	...	...
Places of 500,000 or more	...	...	...	...	...	...	...	...	...
Places of 250,000 or more	340,887	340,887	326,037	326,037	267,583	259,678	...	...	...
Places of 100,000 or more	678,059	678,059	561,571	561,571	267,583	259,678	178,806	132,685	...
Places of 50,000 or more	871,882	871,882	617,296	617,296	424,387	393,959	239,583	184,206	...
Places of 25,000 or more	1,134,285	1,134,285	723,203	723,203	514,378	393,959	283,047	222,342	107,230
Places of 10,000 or more	1,335,830	1,335,830	945,414	945,414	645,983	579,581	382,340	270,206	107,230
Places of 5,000 or more	1,521,373	1,515,888	1,129,759	1,121,538	753,786	649,235	432,801	311,901	156,692
Places of 2,500 or more	1,704,098	1,689,417	1,261,665	1,228,209	855,941	744,273	509,317	370,431	216,714
PERCENT OF TOTAL POPULATION									
Urban territory	54.8	51.7	43.8	40.1	30.2	28.1	21.7	17.3	11.9
Places of 2,500 or more	52.2	51.7	41.2	40.1	30.2	28.1	21.7	17.3	11.9
Places of 1,000,000 or more	...	...	...	...	...	...	...	...	...
Places of 500,000 to 1,000,000	...	...	...	...	...	...	...	...	...
Places of 250,000 to 500,000	10.4	10.4	10.6	10.6	9.4	9.8	...	...	...
Places of 100,000 to 250,000	10.3	10.3	7.7	7.7	...	...	7.6	6.2	...
Places of 50,000 to 100,000	5.9	5.9	1.8	1.8	5.5	5.1	2.6	2.4	...
Places of 25,000 to 50,000	8.0	8.0	3.5	3.5	3.2	...	1.9	1.8	5.9
Places of 10,000 to 25,000	6.2	6.2	7.3	7.3	4.6	7.0	4.2	2.2	...
Places of 5,000 to 10,000	5.7	5.6	6.0	5.8	3.8	2.6	2.1	2.0	2.7
Places of 2,500 to 5,000	5.6	5.3	4.3	3.5	3.6	3.6	3.3	2.7	3.3
Places under 2,500	0.1	...	0.2	...	...	...	...	...	...
Other urban territory	2.6	...	2.4	...	...	...	...	...	...
Rural territory	45.2	48.3	56.2	59.9	69.8	71.9	78.3	82.7	88.1
Places of 1,000 to 2,500	3.4	3.1	4.3	3.5	3.5	3.8	4.3	4.0	2.7
Places under 1,000	2.4	2.5	2.4	2.4	2.7	3.1	3.7	3.7	3.0
Other rural territory	39.4	42.8	49.5	53.9	63.6	65.1	70.3	75.0	82.4
Cumulative summary:									
Places of 1,000,000 or more	...	...	...	...	...	...	...	...	...
Places of 500,000 or more	...	...	...	...	...	...	...	...	...
Places of 250,000 or more	10.4	10.4	10.6	10.6	9.4	9.8	...	...	...
Places of 100,000 or more	20.8	20.8	18.3	18.3	9.4	9.8	7.6	6.2	...
Places of 50,000 or more	26.7	26.7	20.2	20.2	15.0	14.9	10.2	8.6	...
Places of 25,000 or more	34.7	34.7	23.6	23.6	18.2	14.9	12.1	10.4	5.9
Places of 10,000 or more	40.9	40.9	30.9	30.9	22.8	21.9	16.3	12.6	5.9
Places of 5,000 or more	46.6	46.4	36.9	36.6	26.6	24.5	18.4	14.6	8.6
Places of 2,500 or more	52.2	51.7	41.2	40.1	30.2	28.1	21.7	17.3	11.9

Table 4.—POPULATION IN INCORPORATED AND UNINCORPORATED PLACES ACCORDING TO SIZE: 1960

Size of place and urban-rural classification	All places		Incorporated places		Unincorporated places		Size of place and urban-rural classification	All places		Incorporated places		Unincorporated places	
	Number	Population	Number	Population	Number	Population		Number	Population	Number	Population	Number	Population
Total.....	359	1,897,272	347	1,869,902	12	27,370	In urbanized areas—Con.						
500,000 or more.....	...	...	...	...	...	...	5,000 to 10,000.....	4	27,309	4	27,309	...	...
250,000 to 500,000.....	1	340,887	1	340,887	...	...	2,500 to 5,000.....	8	27,065	8	27,065	...	...
100,000 to 250,000.....	2	337,172	2	337,172	...	...	2,000 to 2,500.....	1	2,001	1	2,001	...	...
50,000 to 100,000.....	3	193,823	3	193,823	...	...	1,500 to 2,000.....	...	...	...	...	...	...
25,000 to 50,000.....	8	262,403	8	262,403	...	...	1,000 to 1,500.....	1	1,491	1	1,491	...	...
20,000 to 25,000.....	1	20,289	1	20,289	...	...	500 to 1,000.....	1	534	1	534	...	...
10,000 to 20,000.....	14	181,256	14	181,256	...	...	200 to 500.....	...	...	...	...	...	...
5,000 to 10,000.....	27	185,543	26	180,058	1	5,485	Under 200.....	...	...	...	...	...	...
2,500 to 5,000.....	53	182,725	50	173,529	3	9,196							
2,000 to 2,500.....	11	24,414	9	19,954	2	4,460	Other urban territory.....	84	611,000	80	596,319	4	14,681
1,500 to 2,000.....	27	47,969	25	44,253	2	3,716	25,000 to 50,000.....	5	154,348	5	154,348	...	...
1,000 to 1,500.....	32	40,615	28	36,102	4	4,513	20,000 to 25,000.....	...	...	...	...	...	...
500 to 1,000.....	69	50,834	69	50,834	...	...	10,000 to 20,000.....	11	142,758	11	142,758	...	...
200 to 500.....	76	24,544	76	24,544	...	...	5,000 to 10,000.....	23	158,234	22	152,749	1	5,485
Under 200.....	35	4,798	35	4,798	...	...	2,500 to 5,000.....	45	155,660	42	146,464	3	9,196
In urbanized areas.....	28	1,097,124	28	1,097,124	...	...	Rural territory.....	247	189,148	239	176,459	8	12,689
500,000 or more.....	...	...	...	...	...	...	2,000 to 2,500.....	10	22,413	8	17,953	2	4,460
250,000 to 500,000.....	1	340,887	1	340,887	...	...	1,500 to 2,000.....	27	47,969	25	44,253	2	3,716
100,000 to 250,000.....	2	337,172	2	337,172	...	...	1,000 to 1,500.....	31	39,124	27	34,611	4	4,513
50,000 to 100,000.....	3	193,823	3	193,823	...	...	500 to 1,000.....	68	50,300	68	50,300	...	...
25,000 to 50,000.....	3	108,055	3	108,055	...	...	200 to 500.....	76	24,544	76	24,544	...	...
20,000 to 25,000.....	1	20,289	1	20,289	...	...	Under 200.....	35	4,798	35	4,798	...	...
10,000 to 20,000.....	3	38,498	3	38,498	...	...							

Table 5.—POPULATION OF INCORPORATED PLACES OF 10,000 OR MORE FROM EARLIEST CENSUS TO 1960

[Minus sign (-) denotes decrease]

Incorporated place and census year	Population	Increase over preceding census		Incorporated place and census year	Population	Increase over preceding census		Incorporated place and census year	Population	Increase over preceding census	
		Number	Percent			Number	Percent			Number	Percent
ALEXANDER CITY:				BIRMINGHAM:				FAIRFIELD:			
1960.....	13,140	6,710	104.4	1960.....	340,887	14,850	4.6	1960.....	15,816	2,639	20.0
1950.....	6,430	-210	-3.2	1950.....	326,037	58,454	21.8	1950.....	13,177	1,474	12.6
1940.....	6,640	2,121	46.9	1940.....	267,583	7,905	3.0	1940.....	11,703	644	5.8
1930.....	4,519	2,226	97.1	1930.....	259,678	80,872	45.2	1930.....	11,059	6,056	121.0
1920.....	2,293	883	34.1	1920.....	178,806	46,121	34.8	1920.....	5,003	...	...
1910.....	1,710	649	61.2	1910.....	152,685	94,270	245.4				
1900.....	1,061	382	56.3	1900.....	58,415	12,237	46.7	FLORENCE:			
1890.....	679	-117	-14.7	1890.....	26,178	23,092	748.3	1960.....	31,649	7,770	32.5
1880.....	796	...	...	1880.....	3,086	...	...	1950.....	23,879	8,836	58.7
								1940.....	15,043	3,314	28.3
ANDALUSIA:				CHICKASAW:				1930.....	11,729	1,200	11.4
1960.....	10,263	1,101	12.0	1960.....	10,002	5,082	103.3	1920.....	10,529	3,840	57.4
1950.....	9,162	2,276	33.1	1950.....	4,920	...	...	1910.....	6,689	211	3.3
1940.....	6,886	1,732	33.6					1900.....	6,478	466	7.8
1930.....	5,154	1,131	28.1	GULFMAN:				1890.....	6,012	4,653	342.4
1920.....	4,023	1,543	62.2	1960.....	10,883	3,360	44.7	1880.....	1,359	-644	-32.2
1910.....	2,480	1,929	350.1	1950.....	7,523	2,449	48.3	1870.....	2,003	608	43.6
1900.....	551	281	104.1	1940.....	5,074	2,288	82.1	1860.....	1,395	593	73.9
1890.....	270	-326	-54.7	1930.....	2,786	319	12.9	1850.....	802	...	...
1880.....	596	...	...	1920.....	2,467	337	15.8				
				1910.....	2,130	875	69.7	GADSDEN:			
ANNISTON:				1900.....	1,255	236	23.4	1960.....	58,088	2,363	4.2
1960.....	33,657	2,591	8.3	1890.....	1,017	591	138.7	1950.....	55,725	18,750	50.7
1950.....	31,066	5,543	21.7	1880.....	426	...	...	1940.....	36,975	12,933	53.6
1940.....	25,523	3,178	14.2	DECATUR: <sup>1</sup>				1930.....	24,062	9,305	63.1
1930.....	22,345	4,611	26.0	1960.....	29,217	9,243	46.3	1920.....	14,737	4,180	39.6
1920.....	17,734	4,940	38.6	1950.....	19,974	3,370	20.3	1910.....	10,557	6,275	146.5
1910.....	12,794	3,099	32.0	1940.....	16,604	1,011	6.5	1900.....	4,282	1,381	47.6
1900.....	9,695	-303	-3.0	1930.....	15,593	10,841	228.1	1890.....	2,901	1,204	70.9
1890.....	9,998	9,056	961.4	1920.....	4,752	524	12.4	1880.....	1,697	...	...
1880.....	942	...	...	1910.....	4,228	1,114	35.8				
				1900.....	3,114	349	12.6	HOMESWOOD:			
AUBURN:				1890.....	2,765	1,702	160.1	1960.....	20,289	7,423	57.7
1960.....	16,261	3,322	25.7	1880.....	1,063	392	58.4	1950.....	12,866	5,469	73.9
1950.....	12,939	8,287	178.1	1870.....	671	...	...	1940.....	7,397	1,294	21.2
1940.....	4,652	1,852	66.1	1860.....	(?)	...	...	1930.....	6,103	...	...
1930.....	2,800	657	30.7	1850.....	606	...	...				
1920.....	2,143	735	52.2					HUNTSVILLE:			
1910.....	1,408	-39	-2.7	1960.....	31,440	9,856	45.7	1960.....	72,365	55,928	340.3
1900.....	1,447	7	0.5	1950.....	21,584	4,390	25.5	1950.....	16,437	3,387	26.0
1890.....	1,440	279	24.0	1940.....	17,194	1,148	7.2	1940.....	13,050	1,496	12.9
1880.....	1,161	143	14.0	1930.....	16,046	6,012	59.9	1930.....	11,554	3,536	44.1
1870.....	1,018	...	...	1920.....	10,034	3,018	43.0	1920.....	8,018	407	5.3
				1910.....	7,016	3,741	114.2	1910.....	7,611	-457	-5.7
BESSEMER:				1900.....	3,275	3,028	1,225.9	1900.....	8,068	73	0.9
1960.....	33,054	4,609	16.2	1890.....	247	...	...	1890.....	7,995	3,018	60.6
1950.....	28,445	5,619	24.6	ENTERPRISE:				1880.....	4,977	70	1.4
1940.....	22,826	2,105	10.2	1960.....	11,410	4,122	56.6	1870.....	4,907	1,273	35.0
1930.....	20,721	2,047	11.0	1950.....	7,288	2,935	67.4	1860.....	3,634	771	26.9
1920.....	18,674	7,810	71.9	1940.....	4,353	651	17.6	1850.....	2,863	...	...
1910.....	10,864	4,506	70.9	1930.....	3,702	689	22.9				
1900.....	6,358	1,814	39.9	1920.....	3,013	691	29.8	JASPER:			
1890.....	4,544	...	...	1910.....	2,322	1,712	280.7	1960.....	10,799	2,210	25.7
				1900.....	610	...	...	1950.....	8,589	1,742	25.4

<sup>1</sup> Albany and Decatur cities and Fairview town consolidated as Decatur city in 1927. Combined population for 1920 and prior census years is as follows: 1920, 12,772; 1910, 10,583; 1900, 7,551; 1890, 6,330.

<sup>2</sup> Not returned separately.

Table 5.—POPULATION OF INCORPORATED PLACES OF 10,000 OR MORE FROM EARLIEST CENSUS TO 1960—Con.

[Minus sign (-) denotes decrease]

Incorporated place and census year	Population	Increase over preceding census		Incorporated place and census year	Population	Increase over preceding census		Incorporated place and census year	Population	Increase over preceding census	
		Number	Percent			Number	Percent			Number	Percent
JASPER--Con.				OPELIKA--Con.				SYLACAUGA:			
1930.....	5,313	2,067	63.7	1920.....	4,960	226	4.8	1960.....	12,857	3,251	33.8
1920.....	3,246	737	29.4	1910.....	4,734	489	11.5	1950.....	9,606	3,337	53.2
1910.....	2,509	848	51.1	1900.....	4,245	542	14.6	1940.....	6,269	2,154	52.3
1900.....	1,661	881	112.9	1890.....	3,703	458	14.1	1930.....	4,115	1,974	92.2
1890.....	780	511	190.0	1880.....	3,245	...	...	1920.....	2,141	685	47.0
1880.....	269	...	...					1910.....	1,456	576	65.5
								1900.....	880	416	89.7
								1890.....	464	...	...
MOBILE:				PHENIX CITY: <sup>1</sup>				TALLADEGA:			
1960.....	202,779	73,770	57.2	1960.....	27,630	4,325	18.6	1960.....	17,742	4,608	35.1
1950.....	129,009	50,289	63.9	1950.....	23,305	7,954	51.8	1950.....	13,134	3,836	41.3
1940.....	78,720	10,518	15.4	1940.....	15,351	1,489	10.7	1940.....	9,298	1,702	22.4
1930.....	68,202	7,425	12.2	1930.....	13,862	8,430	155.2	1930.....	7,596	1,050	16.0
1920.....	60,777	9,256	18.0	1920.....	5,432	877	19.3	1920.....	6,546	692	11.8
1910.....	51,521	13,052	33.9	1910.....	4,555	392	9.4	1910.....	5,854	798	15.8
1900.....	38,469	7,393	23.8	1900.....	4,163	463	12.5	1900.....	5,056	2,993	145.1
1890.....	31,076	1,944	6.7	1890.....	3,700	1,476	66.4	1890.....	2,063	830	67.3
1880.....	29,132	-2,902	-9.1	1880.....	2,224	...	...	1880.....	1,233	-700	-36.2
1870.....	32,034	2,776	9.5					1870.....	1,933	...	...
1860.....	29,258	8,743	42.6	PRICHARD:				1860.....	(2)	...	...
1850.....	20,515	7,843	61.9	1960.....	47,371	28,357	149.1	1850.....	1,320	...	...
1840.....	12,672	9,478	296.7	1950.....	19,014	12,930	212.5				
1830.....	3,194	...	...	1940.....	6,084	1,504	32.8				
				1930.....	4,580	...	...				
MONTGOMERY:								TROY:			
1960.....	134,393	27,868	26.2	SELMA:				1960.....	10,234	1,679	19.6
1950.....	106,525	28,441	36.4	1960.....	28,385	5,545	24.3	1950.....	8,555	1,500	21.3
1940.....	78,084	12,005	18.2	1950.....	22,840	3,006	15.2	1940.....	7,055	241	3.5
1930.....	66,079	22,615	52.0	1940.....	19,834	1,822	10.1	1930.....	6,814	1,118	19.6
1920.....	43,464	5,328	14.0	1930.....	18,012	2,423	15.5	1920.....	5,696	735	14.8
1910.....	38,136	7,790	25.7	1920.....	15,589	1,940	14.2	1910.....	4,961	864	21.1
1900.....	30,346	8,463	38.7	1910.....	13,649	4,936	56.7	1900.....	4,097	648	18.8
1890.....	21,883	5,170	30.9	1900.....	8,713	1,091	14.3	1890.....	3,449	1,155	50.3
1880.....	16,713	6,125	57.8	1890.....	7,622	93	1.2	1880.....	2,294	1,236	116.8
1870.....	10,588	1,745	19.7	1880.....	7,529	1,045	16.1	1870.....	1,058	...	...
1860.....	8,843	115	1.3	1870.....	6,484	3,307	104.1				
1850.....	8,728	6,549	300.6	1860.....	3,177	104	3.4				
1840.....	2,179	...	...	1850.....	3,073	...	...				
								TUSCALOOSA:			
MOUNTAIN BROOK:				SHEFFIELD:				1960.....	63,370	16,974	36.6
1960.....	12,680	4,321	51.7	1960.....	13,491	2,724	25.3	1950.....	46,396	18,903	68.8
1950.....	8,359	...	...	1950.....	10,767	2,834	35.7	1940.....	27,493	6,834	33.1
				1940.....	7,933	1,712	27.5	1930.....	20,659	8,663	72.2
OPELIKA:				1930.....	6,221	-461	-6.9	1920.....	11,996	3,589	42.7
1960.....	15,678	3,383	27.5	1920.....	6,682	1,817	37.3	1910.....	8,407	3,313	65.0
1950.....	12,295	3,808	44.9	1910.....	4,865	1,532	46.0	1900.....	5,094	879	20.9
1940.....	8,487	2,331	37.9	1900.....	3,333	602	22.0	1890.....	4,215	1,797	74.3
1930.....	6,156	1,196	24.1	1890.....	2,731	...	...	1880.....	2,418	729	43.2
								1870.....	1,689	-2,300	-57.7
								1860.....	3,989	...	...

<sup>1</sup> Phenix City and Girard city consolidated as Phenix City in 1923. Combined population for 1920 and prior census years is as follows: 1920, 10,374; 1910, 8,769; 1900, 8,003.<sup>2</sup> Not returned separately.

Number of Inhabitants

2-11

Table 6.—AREA AND POPULATION OF COUNTIES, URBAN AND RURAL: 1960 AND 1950

[Minus sign (-) denotes decrease. Percent not shown where less than 0.1]

County	Map reference	Land area in square miles, 1960	1960 population							1950 population			Percent increase, 1950 to 1960				
			Total		Urban			Rural		Total	Urban	Rural	Total	Urban	Rural		
			Number	Per square mile	Total	Percent of total population	Urbanized areas	Other urban territory	Total							Places of 1,000 to 2,500	Other rural territory
The State.....	...	51,060	3,266,740	64.0	1,791,721	54.8	1,180,721	611,000	1,475,019	109,506	1,365,513	3,061,743	1,340,937	1,720,806	6.7	33.6	-14.3
Autauga.....	G-6	599	18,739	31.3	6,616	35.3	...	6,616	12,123	...	12,123	18,186	4,385	13,801	3.0	50.9	-12.2
Baldwin.....	J-4	1,613	49,088	30.4	12,944	26.4	...	12,944	36,144	3,001	33,143	40,997	7,086	33,911	19.7	82.7	6.6
Barbour.....	H-9	899	24,700	27.5	8,357	33.8	...	8,357	16,343	1,313	15,030	28,892	6,906	21,986	-14.5	21.0	-25.7
Bibb.....	F-5	625	14,357	23.0	...	...	...	...	14,357	5,016	9,341	17,987	...	17,987	-20.2	...	-20.2
Blount.....	C-6	640	25,449	39.8	4,136	16.3	...	4,136	21,313	...	21,313	28,975	2,802	26,173	-12.2	47.6	-18.6
Bullock.....	H-8	615	13,462	21.9	3,704	27.5	...	3,704	9,758	...	9,758	16,054	3,232	12,822	-16.1	14.6	-23.9
Butler.....	I-6	773	24,560	31.8	6,894	28.1	...	6,894	17,666	2,093	15,573	29,228	6,781	22,447	-16.0	1.7	21.3
Calhoun.....	D-7	610	95,878	157.2	53,217	55.5	...	53,217	42,661	1,401	41,260	79,539	43,543	35,996	20.5	22.2	18.5
Chambers.....	F-8	598	37,828	63.3	15,914	42.1	...	15,914	21,914	5,298	16,656	39,528	16,138	23,390	-4.3	-1.4	-6.3
Cherokee.....	B-8	600	16,303	27.2	...	...	...	...	16,303	2,392	13,911	17,634	...	17,634	-7.5	...	-7.5
Chilton.....	F-6	699	25,693	36.8	5,683	22.1	...	5,683	20,010	...	20,010	26,922	4,640	22,282	-4.6	22.5	-10.2
Choctaw.....	H-2	918	17,870	19.5	...	...	...	...	17,870	1,765	16,105	19,152	...	19,152	-6.7	...	-6.7
Clarke.....	I-3	1,241	25,738	20.7	8,141	31.6	...	8,141	17,597	1,834	15,763	26,548	3,072	23,476	-3.1	165.0	-25.0
Clay.....	E-8	603	12,400	20.6	...	...	...	...	12,400	3,222	9,178	13,929	...	13,929	-11.0	...	-11.0
Cleburne.....	D-8	574	10,911	19.0	...	...	...	...	10,911	2,400	8,511	11,904	...	11,904	-8.3	...	-8.3
Coffee.....	I-7	677	30,583	45.2	15,731	51.4	...	15,731	14,852	1,093	13,759	30,720	10,224	20,496	-0.4	53.9	-27.5
Colbert.....	A-3	616	46,506	75.5	26,569	57.1	...	26,569	19,937	2,507	17,430	39,561	17,501	22,060	17.6	51.8	-9.6
Conecuh.....	I-5	850	17,762	20.9	3,703	20.8	...	3,703	14,059	...	14,059	21,776	3,454	18,322	-18.4	7.2	-23.3
Cook.....	F-6	648	10,726	16.6	...	...	...	...	10,726	2,023	8,703	11,766	...	11,766	-8.8	...	-8.8
Covington.....	J-6	1,034	35,631	34.5	18,809	52.8	...	18,809	16,822	...	16,822	40,373	17,115	23,258	-11.7	9.9	-27.7
Crenshaw.....	I-7	611	14,909	24.4	...	...	...	...	14,909	3,252	11,657	18,981	...	18,981	-21.5	...	-21.5
Cullman.....	C-5	743	45,572	61.3	10,883	23.9	...	10,883	34,689	1,174	33,515	49,046	7,523	41,523	-7.1	44.7	-16.5
Dale.....	I-8	560	31,066	55.5	9,534	30.7	...	9,534	21,532	...	21,532	20,828	5,238	15,590	49.2	82.0	38.1
Dallas.....	C-5	976	56,667	58.1	28,385	50.1	...	28,385	28,282	...	28,282	56,270	22,840	33,430	0.7	24.3	-15.4
De Kalb.....	A-8	778	41,417	53.2	7,029	17.0	...	7,029	34,388	1,199	33,189	45,048	6,226	38,822	-8.1	12.9	-11.4
Elmore.....	G-7	628	30,524	48.6	6,843	22.4	...	6,843	23,681	...	23,681	31,649	6,023	25,626	-3.6	13.6	-7.6
Escambia.....	J-4	962	33,511	34.8	16,993	50.7	...	16,993	16,518	1,454	15,064	31,443	10,866	20,577	6.6	56.4	-19.7
Etowah.....	C-7	555	96,980	174.7	68,970	71.1	68,944	26	28,010	3,244	24,766	93,892	63,262	30,630	3.3	9.0	-8.6
Fayette.....	C-3	627	16,148	25.8	4,227	26.2	...	4,227	11,921	...	11,921	19,388	3,707	15,681	-16.7	14.0	-24.0
Franklin.....	B-3	644	21,988	34.1	6,628	30.1	...	6,628	15,360	1,954	13,406	25,705	6,012	19,693	-14.5	10.2	-22.0
Geneva.....	J-7	578	22,310	38.6	3,840	17.2	...	3,840	18,470	5,256	13,214	25,899	3,579	22,320	-13.9	7.3	-17.2
Greene.....	F-3	637	13,600	21.4	2,784	20.5	...	2,784	10,816	...	10,816	16,482	...	16,482	-17.5	...	-17.5
Hale.....	F-4	663	19,537	29.5	3,081	15.8	...	3,081	16,456	...	16,456	20,832	...	20,832	-6.2	...	-21.0
Henry.....	I-9	565	15,286	27.1	5,174	33.8	...	5,174	10,112	...	10,112	18,674	...	18,674	-18.1	...	-18.1
Houston.....	J-9	578	50,718	87.7	31,440	62.0	...	31,440	19,278	1,511	17,767	46,522	21,584	24,938	9.0	45.7	-22.7
Jackson.....	A-7	1,124	36,681	32.6	9,355	25.5	...	9,355	27,326	1,456	25,870	38,998	4,731	34,267	-5.9	97.7	-20.3
Jefferson.....	D-6	1,118	634,864	567.9	537,240	84.6	521,330	15,910	97,624	6,930	90,694	598,928	448,546	150,382	13.6	19.8	-11.6
Lamar.....	C-3	605	14,271	23.6	...	...	...	...	14,271	2,838	11,433	16,441	...	16,441	-13.2	...	-13.2
Laurens.....	A-3	688	61,622	89.6	31,649	51.4	...	31,649	29,973	...	29,973	54,179	23,879	30,300	13.7	32.5	-1.1
Lawrence.....	A-5	606	24,501	40.4	...	...	...	...	24,501	1,716	22,785	27,128	...	27,128	-9.7	...	-9.7
Lee.....	C-8	612	49,754	81.3	31,939	64.2	...	31,939	17,815	...	17,815	45,073	25,234	19,839	10.4	26.6	-10.2
Limestone.....	A-5	545	36,513	67.0	9,330	25.6	...	9,330	27,183	...	27,183	35,766	6,309	29,457	2.1	47.9	-7.7
Lowndes.....	H-6	716	15,417	21.5	...	...	...	...	15,417	1,466	13,951	18,018	...	18,018	-14.4	...	-14.4
Macon.....	C-8	616	26,717	43.4	3,561	13.3	...	3,561	23,156	3,568	19,588	30,561	6,712	23,849	-12.6	-46.9	-2.9
Madison.....	A-6	803	117,348	146.1	74,970	63.9	74,970	...	42,378	1,435	40,943	72,903	24,908	37,995	61.0	114.8	11.5
Marengo.....	C-3	977	27,098	27.7	9,893	36.5	...	9,893	17,205	...	17,205	29,494	5,004	24,490	-8.1	97.7	-29.7
Marion.....	C-3	743	21,837	29.4	2,907	13.3	...	2,907	18,930	3,396	15,534	27,264	...	27,264	-20.0	...	-20.0
Marshall.....	H-7	571	48,018	84.1	22,459	46.8	...	22,459	25,559	...	25,559	45,090	13,728	31,362	6.5	63.6	-18.5
Mobile.....	K-2	1,242	314,301	253.1	270,711	86.1	268,139	2,572	43,590	1,918	41,672	231,105	182,963	48,142	36.0	48.0	-9.5
Monroe.....	I-4	1,035	22,372	21.6	3,632	16.2	...	3,632	18,740	1,177	17,563	25,732	2,772	22,960	-13.1	31.0	-18.4
Montgomery.....	C-7	790	169,210	214.2	142,893	84.4	142,893	...	26,317	...	26,317	138,965	109,468	29,497	21.8	30.5	-10.8
Morgan.....	H-5	574	60,454	105.3	34,217	56.6	...	34,217	26,237	...	26,237	52,924	23,403	29,521	14.2	46.2	-11.1
Perry.....	F-5	734	17,358	23.6	3,807	21.9	...	3,807	13,551	1,993	11,558	20,439	2,822	17,617	-15.1	34.9	-23.1
Pickens.....	F-3	887	21,882	24.7	3,194	14.6	...	3,194	18,688	2,955	15,733	24,349	3,170	21,179	-10.1	0.8	-11.8
Pike.....	I-7	673	25,987	38.6	12,757	49.1	...	12,757	13,230	...	13,230	30,608	11,160	19,448	-15.1	14.3	-32.0
Randolph.....	F-8	581	19,477	33.5	5,288	27.1	...	5,288	14,189	...	14,189	22,513	5,392	17,121	-13.5	-1.9	-17.1
Russell.....	C-9	639	46,321	72.5	27,630	59.6	27,630	...	18,721	1,056	17,665	40,364	23,305	17,059	14.8	18.6	9.7
St. Clair.....	D-6	641	25,388	39.6	4,486	17.7	...	4,486	20,902	1,166	19,736	26,687	...	26,687	-4.9	3,962.2	-21.5
Shelby.....	E-6	800	32,132	40.2	2,778	8.6	...	2,778	29,354	7,217	22,137	30,362	...	30,362	5.8	...	-3.3
Sumter.....	F-3	911	20,041	22.0	2,932	14.6	...	2,932	17,109	1,544	15,565	23,610	...	23,610	-15.1	...	-27.5
Talladega.....	D-7	750	65,495	87.3	35,483	54.2	...	35,483	30,012	2,271	27,741	63,639	29,816	33,823	2.9	19.0	-11.3
Tallapoosa.....	F-8	711	35,007	49.2	17,843	51.0	...	17,									

Table 7.—POPULATION OF COUNTIES, BY CENSUS COUNTY DIVISIONS: 1960  
 ["U" denotes an unincorporated place. Total population of a place located in 2 or more census county divisions appears in table 8]

County and census county division	Population	County and census county division	Population	County and census county division	Population	County and census county division	Population
<b>AUTAGA COUNTY</b> .....	18,739	<b>CALHOUN COUNTY--Con.</b>		<b>COFFEE COUNTY--Con.</b>		<b>DALLAS COUNTY</b> .....	56,667
Autaugaville div.....	3,354	Piedmont div.....	7,152	Kinston div.....	1,531	Carlisleville div.....	2,937
Autaville town.....	440	Piedmont city <sup>1</sup> .....	4,794	Kinston town.....	470	Craig-Tyler div.....	7,803
Billingsley div.....	2,131	Weaver div.....	15,977	New Brockton div.....	2,754	Orrville div.....	5,903
Billingsley town.....	179	Blue Mountain town.....	446	New Brockton town.....	1,093	Orrville town.....	422
Marbury div.....	2,476	Weaver town.....	1,401	Victoria div.....	1,584	Plantersville-Woodlawn div.....	6,521
Prattville div.....	10,778	Websters Chapel.....				Safford div.....	2,152
Prattville city <sup>1</sup> .....	6,616	Alexandria Valley div.....	4,646			Sardis div.....	2,966
		West End div.....	12,493			Selma div.....	28,385
		West End Anniston (U).....	5,485			Selma city <sup>21</sup> .....	28,385
<b>BALDWIN COUNTY</b> .....	49,088			<b>COLBERT COUNTY</b> .....	46,506		
Bay Minette div.....	10,788	<b>CHAMBERS COUNTY</b> .....	37,828	Cherokee div.....	4,531	<b>DE KALB COUNTY</b> .....	41,417
Bay Minette city <sup>2</sup> .....	5,197	Five Points div.....	2,879	Cherokee town <sup>16</sup> .....	1,349	Collinsville div.....	2,721
Daphne div.....	5,402	Five Points town.....	285	Leighton div.....	7,364	Collinsville town <sup>22</sup> .....	1,199
Daphne town.....	1,527	Lafayette div.....	7,005	Muscle Shoals div.....	1,158	Crossville div.....	3,840
Elberta div.....	2,385	Lafayette city.....	2,603	Muscle Shoals town.....	6,007	Crossville town.....	579
Elberta town <sup>2</sup> .....	384	Lanett div.....	11,276	Sheffield div.....	4,084	Dog Town-Fischer div.....	2,661
Fairhope div.....	8,745	Lanett city.....	7,674	Sheffield city <sup>16</sup> .....	13,515	Fort Payne div.....	9,033
Fairhope town <sup>2</sup> .....	4,858	Southwest Lanett (U) (pt.).....	1,162	Tusculum div.....	15,089	Fort Payne city <sup>22</sup> .....	7,029
Foley div.....	7,788	Langdale div.....	13,665	Littleville town <sup>16</sup> .....	460	Fyffe div.....	3,879
Foley town <sup>2</sup> .....	2,889	Fairfax (U).....	3,107	Tusculum city <sup>16</sup> .....	8,994	Fyffe town <sup>22</sup> .....	230
Gulf Shores town <sup>2</sup> .....	356	Langdale (U).....	2,528			Geraldine div.....	4,480
Perido div.....	1,675	River View (U).....	1,171	<b>CONECUH COUNTY</b> .....	17,762	Geraldine town <sup>22</sup> .....	340
Robertsdale div.....	7,847	Shawmut (U).....	1,898	Castleberry div.....	4,497	Henagar div.....	2,361
Robertsdale town.....	831	Southwest Lanett (U) (pt.).....	1,027	Castleberry town.....	669	Ider div.....	3,464
Silverhill town.....	1,474	Milltown div.....	1,660	Evergreen div.....	7,508	Rainsville-Sylvania div.....	6,437
Stockton div.....	417	Waverly div.....	1,343	Evergreen city.....	3,703	Rainsville town <sup>22</sup> .....	398
Summersdale div.....	2,899	Waverly town (pt.).....	177	Iyefflon div.....	2,931	Valley Head-Mentone div.....	2,521
Summersdale town.....	533			Repton div.....	1,795	Hammondville town <sup>22</sup> .....	134
		<b>CHEROKEE COUNTY</b> .....	16,303	Repton town.....	314	Valley Head town.....	250
<b>BARBOUR COUNTY</b> .....	24,700	Cedar Bluff-Gaylesville div.....	4,057	Shreve div.....	1,031		
Bakerhill div.....	2,054	Cedar Bluff town.....	687			<b>COOSA COUNTY</b> .....	10,726
Clayton div.....	3,775	Gaylesville town.....	144	Goodwater-Kellyton div.....	4,255	Goodwater town <sup>17</sup> .....	2,023
Clayton town.....	1,313	Centre div.....	5,851	Goodwater town <sup>17</sup> .....	3,343	Rockford div.....	328
Clio div.....	3,469	Centre town <sup>2</sup> .....	2,392	Rockford town.....	328	Rockford town.....	3,128
Blue Springs town.....	94	Leesburg div.....	3,006	Wetumpka-Marble Valley div.....	3,128		
Clio town.....	929	Mud Creek div.....	3,389			<b>COVINGTON COUNTY</b> .....	35,631
Bufoia div.....	12,226			Andalusia div.....	10,263	Andalusia div.....	10,263
Bufoia city <sup>3</sup> .....	8,357	<b>CHILTON COUNTY</b> .....	25,693	Andalusia city.....	10,263	Andalusia East div.....	2,859
Louisville div.....	3,176	Clanton div.....	10,046	Babbie city <sup>18</sup> .....	60	Heath town <sup>18</sup> .....	125
Louisville town.....	890	Clanton city <sup>18</sup> .....	5,683	Sanford town <sup>18</sup> .....	247	Andalusia West div.....	2,014
		Isabella-Pletcher div.....	1,972	Andalusia West town.....	1,464	Falco div.....	1,464
<b>BIBB COUNTY</b> .....	14,357	Jemison div.....	6,075	Florida div.....	5,218	Florida city.....	3,011
Brent div.....	5,348	Jemison town.....	977	Lockhart town <sup>18</sup> .....	799	Opp div.....	8,084
Brent town <sup>4</sup> .....	1,879	Mapleville div.....	968	Opp city.....	5,535	Red Level div.....	2,815
Centerville city (pt.).....	634	Mapleville town.....	3,092	Red Level town.....	2,815	Red Level town.....	327
Centerville div.....	3,393	Mineral Springs div.....	679	River Falls town.....	401	Rosehill-Gantt div.....	2,914
Centerville city (pt.) <sup>4</sup> .....	1,247	Verbena div.....	3,034				
Piper-Coleman div.....	913			<b>CRENSHAW COUNTY</b> .....	14,909	Brantley div.....	3,721
West Blocton div.....	4,703	<b>CHOCTAW COUNTY</b> .....	17,870	Brantley town.....	1,014	Boxier town.....	335
West Blocton town <sup>4</sup> .....	1,156	Butler div.....	5,318	Seavright town.....	64	Luverne div.....	4,955
		Butler town <sup>11</sup> .....	1,765	Luverne town.....	416	Glenwood town.....	2,238
<b>BLOUNT COUNTY</b> .....	25,449	Gilberttown-Toxey div.....	4,199	Petrey-Highland Home div.....	3,524	Petrey town.....	165
Blountsville div.....	3,642	Gilberttown town.....	270	Rutledge div.....	2,709	Rutledge town.....	276
Blountsville town.....	672	Lisman div.....	5,616			<b>CULLMAN COUNTY</b> .....	45,572
Brooksville div.....	3,295	Lisman town.....	909	Bayleyton-Joppa div.....	3,542	Bremen div.....	3,542
Clarence div.....	3,514	Siles div.....	2,737	Crane Hill div.....	3,763	Crane Hill town.....	918
Cleveland div.....	1,706	Siles town.....	353	Cullman div.....	16,028	Cullman city <sup>16</sup> .....	10,883
Hayden div.....	2,663			Hanceville div.....	4,154	Garden City town.....	536
Hayden town.....	187	<b>CLARKE COUNTY</b> .....	25,738	Hanceville town <sup>19</sup> .....	1,174	Holly Pond div.....	2,826
Locust Fork div.....	2,359	Coffeeville div.....	2,002	Holly Pond town.....	193	Jones Chapel div.....	2,717
County Line town (pt.) <sup>3</sup> .....	67	Coffeeville town.....	250			Logan div.....	1,983
Oneonta div.....	8,270	Fulton div.....	2,345	<b>DALE COUNTY</b> .....	31,066	Simcoe div.....	4,365
Oneonta city <sup>2</sup> .....	4,136	Fulton town.....	688	Ariton div.....	3,012	Vinemont div.....	4,010
		Grove Hill div.....	6,701	Ariton town.....	687	Walti div.....	1,266
<b>BULLOCK COUNTY</b> .....	13,462	Grove Hill town <sup>12</sup> .....	1,834	Echo div.....	2,010		
Fitzpatrick div.....	1,407	Jackson North West div.....	6,611	Midland-Pinckard div.....	3,680	<b>FRANKLIN COUNTY</b> .....	21,988
Inverness div.....	2,668	Jackson city <sup>12</sup> .....	4,959	Midland City town.....	854	Phil Campbell div.....	4,073
Midway div.....	2,959	Jackson South East div.....	2,645	Newton div.....	578	Phil Campbell town <sup>27</sup> .....	898
Midway town.....	594	Thomasville div.....	5,434	Daleville town <sup>20</sup> .....	4,768	Red Bay div.....	3,737
Union Springs div.....	6,428	Thomasville town <sup>12</sup> .....	3,182	Newton town.....	693	Red Bay city <sup>27</sup> .....	1,954
Union Springs city <sup>5</sup> .....	3,704			Ozark div.....	958	Russellville div.....	12,544
		<b>CLAY COUNTY</b> .....	12,400	Ozark city <sup>20</sup> .....	17,596	Russellville city <sup>27</sup> .....	6,628
<b>BUTLER COUNTY</b> .....	24,560	Ashland div.....	5,696			Vina div.....	1,634
Chapman div.....	2,826	Ashland town <sup>13</sup> .....	1,610			Hodges town.....	194
Chapman town.....	617	Lineville div.....	4,560			Vina town.....	184
Forest Home div.....	2,767	Lineville town.....	1,612				
Georgiana-Mckenzie div.....	5,727	Millerville-Hollins div.....	2,144				
Georgiana town <sup>7</sup> .....	2,093						
McKenzie town.....	558	<b>CLEBURNE COUNTY</b> .....	10,911				
Greenville div.....	8,745	Fruitthurst div.....	1,708				
Greenville city <sup>7</sup> .....	6,894	Fruitthurst town.....	255				
Greenville East div.....	4,495	Heflin div.....	6,275				
		Edwardsville town.....	168				
<b>CALHOUN COUNTY</b> .....	95,878	Heflin town.....	2,400				
Anniston div.....	33,689	Ranburne div.....	2,928				
Anniston city <sup>8</sup> .....	33,657	Ranburne town <sup>14</sup> .....	317				
Chocoma div.....	2,920						
Jacksonville div.....	8,305	<b>COFFEE COUNTY</b> .....	30,583				
Jacksonville city.....	5,678	Elba div.....	7,021				
Chastotee div.....	1,881	Elba city <sup>15</sup> .....	4,321				
Chastotee town <sup>8</sup> .....	437	Enterprise div.....	11,410				
Oxford div.....	8,815	Enterprise city <sup>15</sup> .....	11,410				
Hobson City town.....	770	Enterprise Rural div.....	2,532				
Oxford town <sup>9</sup> .....	3,603	Goodman div.....	2,313				
		Jack div.....	1,438				

See footnotes at end of table, p. 14.

["U" denotes an unincorporated place. Total population of a place located in 2 or more census county divisions appears in table 8.]

See footnotes at end of table, p. 14.

Table 7.—POPULATION OF COUNTIES, BY CENSUS COUNTY DIVISIONS: 1960—Con.  
 ["U" denotes an unincorporated place. Total population of a place located in 2 or more census county divisions appears in table 8]

County and census county division	Population	County and census county division	Population	County and census county division	Population	County and census county division	Population
<b>RUSSELL COUNTY</b> .....	46,351	<b>SUMTER COUNTY</b> .....	20,041	<b>TALLAPOOSA COUNTY—Con.</b>		<b>WALKER COUNTY—Con.</b>	
Cotton-Scate div.....	5,218	Belmont div.....	1,742	Hackneyville-Oak Town div.....	3,635	Oakman div.....	3,195
Crawford div.....	2,427	Cuba div.....	2,065	New Site-Daviston div.....	2,406	Oakman town.....	849
Hartsboro div.....	4,443	Cuba town.....	390	Daviston town.....	129	Parish div.....	4,953
Hartsboro town <sup>2</sup> .....	1,056	Gainesville div.....	1,419	Tallapoosa div.....	6,573	Parish town <sup>25</sup> .....	1,608
Ladonia div.....	6,633	Gainesville town.....	224	Carrville town <sup>27</sup> .....	1,081	Sipsey div.....	5,075
Phenix City div.....	27,630	Livingston div.....	5,642	Tallapoosa city (pt.) <sup>27</sup> .....	1,763	Townley div.....	2,928
Phenix City.....	27,630	Epas town.....	337			West Jasper div.....	1,206
		Livingston town.....	1,544	<b>TUSCALOOSA COUNTY</b> .....	109,047		
<b>ST. CLAIR COUNTY</b> .....	25,398	Penola-Geiger div.....	2,733	Abernethy div.....	1,819	<b>WASHINGTON COUNTY</b> .....	15,372
Ashville div.....	4,402	Geiger town.....	104	Big Sandy-Duncanville div.....	2,583	Chatham div.....	3,472
Ashville town <sup>23</sup> .....	973	York div.....	6,440	Brookwood div.....	3,033	Chatham town.....	993
Steele town <sup>23</sup> .....	625	York town <sup>25</sup> .....	2,932	Coaling-Vance div.....	2,364	Fruitdale div.....	2,294
Meay div.....	4,319			Coker div.....	3,055	Millry div.....	2,948
Leeds city (pt.) <sup>23</sup> .....	521	<b>TALLADEGA COUNTY</b> .....	65,495	Elrod-Moore Bridge-Behola div.....	1,191	Millry town.....	645
Pell City div.....	8,902	Childersburg div.....	7,214	Footers div.....	2,682	McIntosh div.....	3,782
Pell City town <sup>23</sup> .....	4,165	Don Air town.....	297	Holt-Cottondale div.....	7,417	Wagarville div.....	2,876
Riverside town.....	159	Childersburg city.....	4,884	Northport div.....	9,127		
Vincent town (pt.) <sup>23</sup> .....	...	Fayetteville-Talladega		Northport city <sup>28</sup> .....	5,245	<b>WILCOX COUNTY</b> .....	18,739
Regland div.....	3,098	Springs div.....	8,080	Samantha div.....	2,686	Alberta div.....	3,121
Regland town <sup>23</sup> .....	1,166	Gunts Quarry town.....	238	Taylorville div.....	7,632	Camden div.....	5,277
Springville div.....	4,567	Mignon (U).....	2,271	Tuscaloosa div.....	63,944	Camden town.....	1,121
Margaret town <sup>23</sup> .....	715	Talladega Springs town.....	177	Tuscaloosa city <sup>28</sup> .....	63,370	Coy-Fatuma div.....	2,535
Odenville town.....	300	Howells-Cove div.....	3,057	Winham Springs div.....	1,514	Vredenburgh town (pt.).....	99
Springville town.....	822	Lincoln-Eastaboga div.....	3,775			Pine Apple div.....	3,319
		Lincoln town.....	629	<b>WALKER COUNTY</b> .....	54,211	Oak Hill town.....	116
<b>SHELBY COUNTY</b> .....	32,132	Munford div.....	4,097	Carbon Hill div.....	3,896	Pine Apple town.....	355
Culera div.....	3,138	Renfro-Lander div.....	2,237	Carbon Hill city.....	1,944	Pine Hill div.....	4,487
Calera town.....	1,928	Vincent town (pt.) <sup>26</sup> .....	...	Kansas town <sup>29</sup> .....	211	Pine Hill town.....	367
Chalusa div.....	3,428	Stockdale-Chandler Springs div.....	1,990	Cordova div.....	4,824		
Leeds city (pt.) <sup>24</sup> .....	23	Sycamore-Winterboro div.....	4,446	Cordova town <sup>29</sup> .....	3,184	<b>WINSTON COUNTY</b> .....	14,858
Columbiana div.....	4,374	Sylacauga div.....	12,857	Dora div.....	6,171	Addison div.....	3,854
Columbiana town.....	2,264	Sylacauga city <sup>26</sup> .....	12,857	Dora town <sup>29</sup> .....	1,776	Addison town.....	343
Helena div.....	4,142	Talladega div.....	17,742	Summit town <sup>29</sup> .....	1,287	Double Springs div.....	2,984
Helena town.....	523	Talladega city <sup>26</sup> .....	17,742	East Jasper div.....	1,631	Double Springs town <sup>30</sup> .....	811
Montevallo div.....	5,880			Empire div.....	2,010	Haleyville div.....	6,629
Montevallo town <sup>24</sup> .....	2,755	<b>TALLAPOOSA COUNTY</b> .....	35,007	Flat Creek-Wegra div.....	2,084	Haleyville city <sup>30</sup> .....	3,740
Wilton town.....	428	Alexander City div.....	15,208	Flat Creek-Wegra (U) (pt.).....	955	Lynn div.....	1,391
Siluria div.....	5,046	Alexander City <sup>27</sup> .....	13,140	Jasper div.....	10,799	Lynn town <sup>30</sup> .....	531
Alabaster town.....	1,623	Camp Hill div.....	2,428	Jasper city <sup>29</sup> .....	10,799		
Siluria town <sup>24</sup> .....	756	Camp Hill town.....	1,270	Manchester div.....	2,808		
Vincent div.....	4,340	Dadeville div.....	6,757	Navoo div.....	2,631		
Harperville town.....	607	Dadeville town <sup>27</sup> .....	2,940	Navoo town.....	318		
Vincent town (pt.).....	1,402						
Wilsonville div.....	1,784						
Wilsonville town.....	683						

<sup>1</sup> AUSAUGA.—Annexations to Prattville city. Prattmont town and Prattville city consolidated and designated as Prattville city.

<sup>2</sup> BALDWIN.—By Minette town changed to city since 1950. Annexations to Fairhope and Foley towns. Loxley, Elberta, and Gulf Shores towns incorporated since 1950.

<sup>3</sup> BALDWIN.—Annexations to Eufaula city.

<sup>4</sup> BIBB.—Annexations to West Blocton and Brent towns and Centerville city. Centerville town changed to city since 1950.

<sup>5</sup> BLOUNT.—County line and Allgood towns incorporated since 1950. Annexations to Oneonta city.

<sup>6</sup> BULLOCK.—Annexations to Union Springs city.

<sup>7</sup> BUTLER.—Annexations to Greenville city and Georgiana town.

<sup>8</sup> CALHOUN.—Annexations to Piedmont and Andiston cities and Oxford town. Chatahchee town incorporated since 1950.

<sup>9</sup> CHEROKEE.—Annexations to Centre town.

<sup>10</sup> CHILTON.—Annexations to Clinton city. Clinton city returned in 1950 as a town.

<sup>11</sup> CHOCTAW.—Annexations to Butler town.

<sup>12</sup> CLARKE.—Annexations to Thomasville and Grove Hill towns and Jackson city. Jackson town changed to Jackson city since 1950.

<sup>13</sup> CLAY.—Annexation to Ashland town.

<sup>14</sup> CLEBURNE.—Annexations to Elba and Enterprise cities.

<sup>15</sup> COFFEY.—Annexations to Sheffield and Tusculum cities and Cherokee town.

<sup>16</sup> COLBERT.—Annexations to Sheffield and Tusculum cities and Cherokee town.

<sup>17</sup> COOSA.—Annexation to Goodwater town.

<sup>18</sup> COVINGTON.—Annexations to Opp and Andalusia cities and Lockhart town. Heath and Sanford towns and Babbie city incorporated since 1950.

<sup>19</sup> CULLMAN.—Hanceville and Steppville towns consolidated and designated as Hanceville town. Annexations to Cullman city.

<sup>20</sup> DALE.—Annexations to Ozark city. Daleville town incorporated since 1950.

<sup>21</sup> DALLAS.—Annexations to Selma city.

<sup>22</sup> DE KALB.—Annexations to Hammondville and Collinsville towns and Fort Payne city.

<sup>23</sup> DE KALB.—Annexations to Hammondville and Collinsville towns and Fort Payne city.

<sup>24</sup> ESCAMBA.—Annexations to Eclectic town, Wetumpka and Tallapoosa cities. Tallapoosa town and Tallapoosa town consolidated as Tallapoosa city.

<sup>25</sup> ETOWAH.—Annexations to Hokes Bluff, Glencoe, and Altoona towns and Attalla, Boaz, and Gadsden cities. Reece City, Rainbow City, and Southside towns incorporated since 1950.

<sup>26</sup> FAYETTE.—Glen Allen town incorporated since 1950. Annexations to Fayette city.

<sup>27</sup> FRANKLIN.—Annexations to Russellville and Red Bay cities and Phil Campbell town.

<sup>28</sup> GENEVA.—Gerson town changed to city since 1950.

<sup>29</sup> GREENE.—Eutaw city returned in 1950 as a town. Annexation to Eutaw city.

<sup>30</sup> HALE.—Annexations to and detachments from Greensboro town.

<sup>31</sup> HENRY.—Annexations to Abbeville and Headland cities.

<sup>32</sup> HOUSTON.—Kinsey town incorporated since 1950. Annexations to Dothan city and Madrid town. Avon town incorporated since 1950.

<sup>33</sup> JACKSON.—Annexations to and detachments from Stevenson town. Annexations to Scottsboro city and Section town.

<sup>34</sup> JEFFERSON.—Incorporations since 1950: Gardendale, Hueytown, Midfield, and Vestavia Hills cities; and Adamsville, Brownville, County Line, Kimberly, Maytown,

Morris, and Sylvan Springs towns. Annexations since 1950 to Bessemer, Birmingham, Fairfield, Graysville, Homewood, Irondale, Leeds, Lipscomb, Mountain Brook, and Warrior cities; and Brighton, Fultondale, Trafford, and Trussville towns. Graysville, Irondale, Lipscomb, and Warrior towns changed to cities since 1950.

<sup>35</sup> LAMAR.—Detroit town incorporated since 1950. Annexations to Millport, Sulligent, and Vernon towns.

<sup>36</sup> LAUDERDALE.—Annexations to Florence city. Killen and Lexington towns incorporated since 1950.

<sup>37</sup> LEE.—Annexations to Notasulga town and Opelika city.

<sup>38</sup> LIMESTONE.—Annexations to Athens city.

<sup>39</sup> MACON.—Annexations to Notasulga town. Detachments from Tuskegee city.

<sup>40</sup> MADISON.—Annexations to Madison town and Huntville city. New Hope town incorporated since 1950.

<sup>41</sup> MARENGO.—Annexations to Demopolis city and Linden town. Myrtlewood town incorporated since 1950.

<sup>42</sup> MARION.—Annexations to Hamilton, Guin, and Brilliant towns and Winfield city.

<sup>43</sup> MARION.—Annexations to Hamilton, Guin, and Brilliant towns and Winfield city.

<sup>44</sup> MARSHALL.—Annexations to Guntersville, Albertville, and Boaz cities and Arab town.

<sup>45</sup> MOBILE.—Satsuma, Bayou La Batre, and Mount Vernon towns and Saraland city incorporated since 1950. Chickasaw city returned in 1950 as a town. Annexations to Chickasaw, Mobile, and Prichard cities.

<sup>46</sup> MONROE.—Annexations to Beatrice town and Monteville city. Monteville town changed to city since 1950.

<sup>47</sup> MONTGOMERY.—Annexations to Montgomery city.

<sup>48</sup> MORGAN.—Somerville and Flint City towns incorporated since 1950. Decatur city and Austinville town consolidated and designated as Decatur city. Annexations to Decatur and Hartsville cities and Trinity town.

<sup>49</sup> PERRY.—Annexations to Marion city and Uniontown town.

<sup>50</sup> PICKENS.—Annexation to Gordo town. Ethelsville town incorporated since 1950.

<sup>51</sup> PIKE.—Annexations to Troy city.

<sup>52</sup> RANDOLPH.—Annexations to Wedowee town.

<sup>53</sup> RUSSELL.—Annexations to Hartsboro town.

<sup>54</sup> ST. CLAIR.—Steele and Margaret towns incorporated since 1950. Pell City, Eden, and Oak Ridge towns consolidated and designated as Pell City town. Annexations to Ashville, Regland, and Pell City towns and Leeds city. Vincent town returned in Shelby County only in 1950.

<sup>55</sup> SHELBY.—Annexations to Leeds city and Montevallo town. Alabaster and Siluria towns incorporated since 1950.

<sup>56</sup> SUMTER.—Annexations to York town.

<sup>57</sup> TALLADEGA.—Annexations to Sylacauga and Talladega cities and detachments from Talladega city. Vincent town returned in Shelby County only in 1950.

<sup>58</sup> TALLAPOOSA.—Annexations to and detachments from Alexander City. Annexations to Dadeville town and Tallapoosa city. Tallapoosa town changed to city since 1950. Carrville town and Tallapoosa City town consolidated and designated as Carrville town.

<sup>59</sup> TUSCALOOSA.—Annexation to Northport city. Annexations to Tuscaloosa city.

<sup>60</sup> WALKER.—Kansas and Sumiton towns incorporated since 1950. Annexations to Dora, Cordova, and Parrish towns and Jasper city.

<sup>61</sup> WINSTON.—Annexations to Double Springs town and Haleyville city. Lynn town incorporated since 1950.

["U" denotes an unincorporated place. Asterisk (\*) denotes an incorporated place under 2,500 located in an urbanized area.

<sup>1</sup> Brilliant changed from Boston since 1950.

Table 8.—POPULATION OF ALL INCORPORATED PLACES AND OF UNINCORPORATED PLACES OF 1,000 OR MORE: 1940 TO 1960—Con.

["U" denotes an unincorporated place. Asterisk (\*) denotes an incorporated place under 2,500 located in an urbanized area]

Place	County	1960	1950	1940	Place	County	1960	1950	1940
Irondale.....	Jefferson.....	3,501	1,876	1,486	Pollard.....	Escambia.....	210	271	339
Jackson.....	Clarke.....	4,959	3,072	2,039	Prattville.....	Autauga.....	6,616	4,385	2,664
Jacksonville.....	Calhoun.....	5,678	4,751	2,995	Prichard.....	Mobile.....	47,371	19,014	6,084
Jasper.....	Walker.....	10,799	8,589	6,847	Ragland.....	St. Clair.....	1,166	1,008	1,070
Jemison.....	Chilton.....	977	847	456	Rainbow City.....	Etowah.....	1,625	...	...
Kansas.....	Walker.....	211	...	...	Rainsville.....	De Kalb.....	398	...	...
Kennedy.....	Lamar.....	379	393	367	Ranburne.....	Cleburne.....	317	...	...
Killen.....	Lauderdale.....	620	...	...	Red Bay.....	Franklin.....	1,954	1,805	1,560
Kimberly.....	Jefferson.....	763	...	...	Red Level.....	Covington.....	327	656	516
Kinsey.....	Houston.....	283	...	...	Reece City.....	Etowah.....	470	...	...
Kinston.....	Coffee.....	470	312	343	Reform.....	Pickens.....	1,241	1,141	885
Lafayette.....	Chambers.....	2,605	2,353	2,138	Repton.....	Conocochee.....	314	364	365
Langett.....	Chambers.....	7,674	7,434	6,141	River Falls.....	Covington.....	401	376	413
Langdale (U).....	Chambers.....	2,528	2,721	...	Riverside.....	St. Clair.....	159	116	135
Leads.....	St. Clair.....	6,162	3,306	2,910	River View (U).....	Chambers.....	1,171	1,322	...
Leighton.....	Colbert.....	1,158	1,080	810	Roanoke.....	Randolph.....	5,288	5,392	4,168
Lexington.....	Lauderdale.....	315	...	...	Robertsdale.....	Baldwin.....	1,474	1,128	779
Lincoln.....	Talladega.....	629	547	420	Rockford.....	Coosa.....	328	373	394
Linden.....	Marion.....	2,516	1,363	1,203	Rogersville.....	Lauderdale.....	766	531	508
Lineville.....	Clay.....	1,612	1,548	1,300	Russellville.....	Franklin.....	6,628	6,012	3,510
Lipscomb.....	Jefferson.....	2,811	2,550	1,740	Rutledge.....	Crenshaw.....	276	370	289
Lisman.....	Choctaw.....	909	606	545	Samson.....	Geneva.....	1,932	2,204	2,182
Littleville.....	Colbert.....	460	...	...	Sanford.....	Covington.....	247	...	...
Livingston.....	Sumter.....	1,544	1,681	1,170	Saraland.....	Mobile.....	4,595	...	...
Lockhart.....	Covington.....	799	819	910	Satsuma.....	Mobile.....	1,491	...	...
Louisville.....	Barbour.....	890	622	662	Scottsboro.....	Jackson.....	6,449	4,731	2,834
Loxley.....	Baldwin.....	831	...	...	Searight.....	Crenshaw.....	64	82	133
Luverne.....	Crenshaw.....	2,238	2,221	2,243	Section.....	Jackson.....	595	476	...
Lynn.....	Winston.....	531	...	...	Selma.....	Dallas.....	28,385	22,840	19,834
McKenzie.....	Butler.....	558	504	504	Shawmut (U).....	Chambers.....	1,898	3,266	...
Madison.....	Madison.....	1,435	530	455	Sheffield.....	Colbert.....	13,491	10,767	7,933
Madrid.....	Houston.....	245	312	229	Silas.....	Choctaw.....	353	383	...
Malvern.....	Geneva.....	213	196	190	Siluria.....	Shelby.....	736	...	...
Maplesville.....	Chilton.....	679	806	...	Silverhill.....	Baldwin.....	417	354	270
Margaret.....	St. Clair.....	715	...	...	Slocumb.....	Geneva.....	1,368	1,219	1,041
Marion.....	Perry.....	3,807	2,822	2,382	Somerville.....	Morgan.....	166	...	...
Maytown.....	Jefferson.....	297	...	...	Southside.....	Etowah.....	436	...	...
Mentone.....	De Kalb.....	250	241	154	Southwest Lanett (U).....	Chambers.....	2,189	1,631	...
Midfield.....	Jefferson.....	3,556	...	...	Springville.....	St. Clair.....	822	553	460
Midland City.....	Dale.....	854	784	647	Steele.....	St. Clair.....	625	...	...
Midway.....	Bullock.....	594	544	617	Stevenson.....	Jackson.....	1,456	927	793
Mignon (U).....	Talladega.....	2,271	3,053	...	Sulligent.....	Lamar.....	1,346	1,209	1,287
Millport.....	Lamar.....	943	682	700	Sumiton.....	Walker.....	1,287	...	...
Millry.....	Washington.....	645	607	...	Summerdale.....	Baldwin.....	533	489	239
Mobile.....	Mobile.....	202,779	129,009	78,720	Sylacauga.....	Talladega.....	12,857	9,606	6,269
Monroeville.....	Monroe.....	3,632	2,772	1,724	Sylvan Springs.....	Jefferson.....	245	...	...
Montevallo.....	Shelby.....	2,755	2,150	1,490	Talladega.....	Talladega.....	17,742	13,134	9,298
Montgomery.....	Montgomery.....	134,393	106,525	78,084	Talladega Springs.....	Talladega.....	177	222	150
Mooreville.....	Limestone.....	93	101	129	Tallassee.....	Elmore.....	4,934	4,225	1,011
Morris.....	Jefferson.....	638	...	...	Tarrant City.....	Jefferson.....	7,810	7,571	6,833
Moulton.....	Lawrence.....	1,716	1,384	752	Thomashton.....	Marengo.....	857	1,027	345
Moundville.....	Hale.....	822	901	812	Thomasville.....	Clarke.....	3,182	2,425	2,000
Mountain Brook.....	Jefferson.....	12,680	8,359	...	Thorsby.....	Chilton.....	968	828	772
Mount Pinson (U).....	Jefferson.....	1,121	...	...	Town Creek.....	Lawrence.....	810	763	637
Mount Vernon.....	Mobile.....	553	...	...	Toxey.....	Choctaw.....	157	251	...
Mulga.....	Jefferson.....	482	532	...	Trafford.....	Jefferson.....	529	551	...
Muscle Shoals.....	Colbert.....	4,084	1,937	1,113	Trinity.....	Morgan.....	454	342	249
Myrtlewood.....	Marengo.....	403	...	...	Troy.....	Pike.....	10,234	8,555	7,055
Nauclo.....	Walker.....	318	416	533	Trussville.....	Jefferson.....	2,510	1,575	...
Newbern.....	Hale.....	316	367	388	Tuscaloosa.....	Tuscaloosa.....	63,370	46,396	27,493
New Brockton.....	Coffee.....	1,093	1,055	878	Tuscumbia.....	Colbert.....	8,994	6,734	5,515
New Hope.....	Madison.....	953	...	...	Tuskegee.....	Macon.....	1,750	6,712	3,937
Newton.....	Dale.....	958	745	616	Union Springs.....	Bullock.....	3,704	3,232	3,107
Neville.....	Henry.....	546	565	578	Uniontown.....	Perry.....	1,993	1,798	1,869
North Johna.....	Jefferson.....	338	454	404	Valley Head.....	De Kalb.....	424	418	439
Northport.....	Tuscaloosa.....	5,245	3,885	3,187	Vernon.....	Lamar.....	1,492	791	759
Notasulga.....	Lee.....	884	816	863	Vestavia Hills.....	Jefferson.....	4,029	...	...
Oak Hill.....	Wilcox.....	116	123	159	Vina.....	Franklin.....	184	313	472
Oakman.....	Walker.....	849	1,022	897	Vincent.....	St. Clair.....	1,402	1,240	1,108
Odenville.....	St. Clair.....	300	302	347	Vredenburgh.....	Shelby.....	...	...	...
Obatchee.....	Calhoun.....	437	...	...	Wadley.....	Talladega.....	632	796	666
Onaonta.....	Blount.....	4,136	2,802	2,376	Wadley.....	Wilcox.....	...	...	...
Opelika.....	Lee.....	15,678	12,295	8,487	Wadley.....	Randolph.....	605	535	493
Opp.....	Covington.....	5,535	5,240	3,178	Walnut Grove.....	Etowah.....	237	222	206
Orrville.....	Dallas.....	422	416	416	Warrior.....	Jefferson.....	2,448	1,384	1,008
Oxford.....	Calhoun.....	3,603	1,697	1,393	Waterloo.....	Lauderdale.....	215	327	524
Ozark.....	Dale.....	9,534	5,238	3,601	Waverly.....	Chambers.....	250	306	321
Paint Rock.....	Jackson.....	264	276	282	Weaver.....	Calhoun.....	1,401	743	...
Parrish.....	Walker.....	1,608	757	870	Webb.....	Houston.....	331	344	379
Pell City.....	St. Clair.....	4,165	1,189	900	Wedowee.....	Randolph.....	917	559	525
Petrey.....	Crenshaw.....	165	171	258	West Blocton.....	Bibb.....	1,156	1,280	1,317
Phenix City.....	Russell.....	27,630	23,305	15,351	West End Anniston (U).....	Calhoun.....	5,485	...	...
Phil Campbell.....	Franklin.....	898	469	533	Wetumpka.....	Elmore.....	3,672	3,813	3,089
Piedmont.....	Calhoun.....	4,794	4,498	4,019	Wilsonville.....	Shelby.....	683	692	749
Pinckard.....	Dale.....	578	515	555	Wilton.....	Shelby.....	428	413	422
Pine Apple.....	Wilcox.....	355	445	455	Winfield.....	Marion.....	2,907	2,108	1,662
Pine Hill.....	Wilcox.....	367	408	418	Woodville.....	Jackson.....	196	165	183
Pisgah.....	Jackson.....	214	217	...	York.....	Sumter.....	2,932	1,774	1,783
Pleasant Grove.....	Jefferson.....	3,097	1,802	1,066					

Table 9.—1960 POPULATION OF AREAS ANNEXED BETWEEN 1950 AND 1960 BY INCORPORATED PLACES HAVING 2,500 INHABITANTS OR MORE IN 1950

[Minus sign (-) denotes decrease]

Incorporated place	1960 population			1950 population, total	Increase, 1950 to 1960, in 1950 area	Incorporated place	1960 population			1950 population, total	Increase, 1950 to 1960, in 1950 area
	Total	In 1950 area	In annexed area				Total	In 1950 area	In annexed area		
Albertville.....	8,250	7,076	1,174	5,397	1,679	Homewood.....	20,289	17,342	2,947	12,866	4,476
Alexander City.....	13,160	6,696	6,464	6,430	266	Huntsville.....	72,365	34,794	37,571	16,437	18,357
Andalusia.....	10,263	9,608	655	9,162	446	Jackson.....	4,959	3,931	1,028	3,072	859
Anniston.....	33,627	33,074	553	31,066	2,008	Jasper.....	10,799	6,666	4,133	8,589	-1,923
Athens.....	9,130	8,369	961	6,309	2,060	Leeds.....	6,162	3,967	2,195	3,306	661
Atmore.....	8,173	8,119	54	5,720	2,399	Lipscomb.....	2,811	2,757	54	2,550	207
Attalla.....	8,827	7,981	846	7,537	444	Marion.....	3,807	3,111	696	2,822	289
Bessemer.....	33,054	28,011	5,043	28,445	-434	Mobile.....	202,779	140,404	62,375	129,009	11,395
Birmingham.....	340,887	323,173	12,714	336,037	2,136	Monroeville.....	3,632	3,061	571	2,772	239
Boutwell.....	6,654	3,908	2,746	3,078	830	Montgomery.....	134,393	120,636	13,757	106,525	14,111
Breaston.....	6,809	6,187	622	5,146	1,041	Mountain Brook.....	12,680	10,983	2,097	8,359	2,224
Chickasaw.....	10,002	5,744	4,258	4,920	824	Northport.....	5,245	4,343	902	3,885	458
Canton.....	5,683	5,273	410	4,640	633	Oneonta.....	4,136	2,989	1,147	2,802	137
Cordova.....	3,184	2,995	189	3,156	-161	Opelika.....	15,678	13,474	2,204	12,295	1,179
Cullman.....	10,883	8,552	2,331	7,523	1,029	Opp.....	5,535	4,926	609	5,240	-314
Dacula.....	29,217	23,969	5,248	19,974	3,595	Osark.....	9,534	7,969	1,565	5,238	2,731
Danville.....	7,377	5,761	1,616	5,004	757	Piedmont.....	4,794	4,695	99	4,498	197
Dothan.....	31,660	27,199	4,461	21,584	5,615	Prattville.....	6,616	5,401	1,215	4,385	1,016
Elba.....	6,551	3,643	2,908	2,936	712	Priestland.....	47,371	20,114	27,257	19,014	1,100
Enterprise.....	11,410	10,684	726	7,288	3,396	Russellville.....	6,628	6,384	244	6,012	372
Euclid.....	8,327	6,777	1,550	6,906	-129	Scottsboro.....	6,449	5,734	715	4,731	1,003
Fairfield.....	15,816	15,141	675	13,177	-1,036	Selma.....	28,385	23,068	5,317	22,840	228
Fairhope.....	4,838	4,805	33	3,324	1,451	Sheffield.....	13,491	13,491	...	10,767	2,724
Fayette.....	4,227	3,805	422	3,707	98	Sylacauga.....	12,857	10,439	2,418	9,606	833
Florence.....	31,629	29,166	2,463	23,879	5,287	Talladega.....	17,742	12,771	4,971	13,134	-363
Fort Payne.....	7,069	6,731	338	6,236	505	Tallapoosa.....	4,934	3,365	1,569	4,225	-860
Gadsden.....	58,088	54,570	3,518	55,725	-1,155	Troy.....	10,234	9,161	1,073	8,555	606
Greenville.....	6,894	6,618	276	6,781	-163	Tuscaloosa.....	63,370	52,382	10,988	46,396	5,986
Guntersville.....	6,592	5,985	1,607	5,253	332	Tusculum.....	8,994	8,082	912	6,734	1,348
Haleyville.....	3,740	3,223	517	3,331	-108	Union Springs.....	3,704	3,502	202	3,232	270
Hartselle.....	5,000	4,389	611	3,429	1,160	Wetumpka.....	3,672	3,604	68	3,813	-209

Table 10.—POPULATION OF URBANIZED AREAS: 1960 AND 1950

Area	1960	1950	Area	1960	1950
<b>BIRMINGHAM (ALA.) URBANIZED AREA</b>			<b>COLUMBUS (GA.) URBANIZED AREA</b>		
The area.....	521,330	445,314	That part of the area in Alabama <sup>3</sup> .....	27,630	23,305
Birmingham city.....	340,887	326,037	The area includes the following census county divisions and parts of census county divisions:		
Outside central city.....	180,443	119,277	Russell County (pt.).....	27,630	123,305
The area includes the following census county divisions and parts of census county divisions:			Phenix City div.....	27,630	...
Jefferson County (pt.).....	521,330	445,314	Phenix City.....	27,630	23,305
Adamsville div. (pt.).....	355	...	<b>GADSDEN (ALA.) URBANIZED AREA</b>		
Bessemer div.....	33,054	...	The area.....	68,944	(4)
Bessemer city.....	33,054	28,445	Gadsden city.....	58,088	...
Birmingham div.....	340,887	326,037	Outside central city.....	10,856	...
Birmingham city.....	340,887	326,037	The area includes the following census county divisions and parts of census county divisions:		
Brighton div.....	11,371	...	Etowah County (pt.).....	68,944	...
Brighton town.....	2,884	1,689	Attalla div. (pt.).....	8,264	...
Midfield city.....	3,556	(2)	Attalla city.....	8,257	...
Catherwood Park div. (pt.).....	4,685	...	Gadsden div.....	58,088	...
Decatur div. (pt.).....	1,135	...	Gadsden city.....	58,088	...
Dolomite div. (pt.).....	7,430	...	Glencoe div. (pt.).....	2,592	...
Fairfield div.....	15,816	...	Glencoe town.....	2,592	...
Fairfield city.....	15,816	13,177	<b>HUNTSVILLE (ALA.) URBANIZED AREA</b>		
Fultondale div. (pt.).....	2,001	1,304	The area.....	74,970	(4)
Fultondale town.....	2,001	...	Huntsville city.....	72,365	...
Homewood div.....	20,404	...	Outside central city.....	2,605	...
Homewood city.....	20,289	12,866	The area includes the following census county divisions and parts of census county divisions:		
Irondale-Trussville div. (pt.).....	3,501	...	Madison County (pt.).....	74,970	...
Irondale city.....	3,501	1,876	Huntsville div.....	72,365	...
Jacksonville div. (pt.).....	5,914	...	Huntsville city.....	72,365	...
Lipscomb div.....	7,704	(2)	Meridianville div. (pt.).....	1,575	...
Brownville town.....	534	(2)	New Hope div.....	1,030	...
Lipscomb city.....	2,811	2,590			
Mountain Brook div.....	12,680	...			
Mountain Brook city.....	12,680	8,359			
Mount Pines div. (pt.).....	10,270	...			
North Highlands div. (pt.).....	6,190	...			
Hueytown city.....	5,997	(2)			
North Johna-West Bessemer div. (pt.).....	3,366	...			
Overton div. (pt.).....	2,386	...			
Pleasant Grove div. (pt.).....	3,097	...			
Pleasant Grove town.....	3,097	1,802			
Rutledge Springs-Woodward div.....	9,293	...			
Tarrant City div. (pt.).....	12,504	...			
Tarrant City.....	7,810	7,571			
Vestavia Hills div. (pt.).....	7,287	...			
Vestavia Hills city.....	4,029	(2)			

See footnotes at end of table, p. 18.

Table 10.—POPULATION OF URBANIZED AREAS: 1960 AND 1950—Con.

Area	1960	1950	Area	1960	1950	Area	1960	1950
MOBILE (ALA.) URBANIZED AREA			MONTGOMERY (ALA.) URBANIZED AREA			TUSCALOOSA (ALA.) URBANIZED AREA		
The area.....	268,139	182,963	The area.....	142,893	109,468	The area.....	70,815	(4)
Mobile city.....	202,779	129,009	Montgomery city.....	134,393	106,525	Tuscaloosa city.....	63,370	...
Outside central city.....	65,360	53,954	Outside central city.....	8,500	2,943	Outside central city.....	13,445	...
The area includes the following census county divisions and parts of census county divisions:			The area includes the following census county divisions and parts of census county divisions:			The area includes the following census county divisions and parts of census county divisions:		
Mobile County (pt.).....	268,139	182,963	Montgomery County (pt.).....	142,893	109,468	Tuscaloosa County (pt.).....	70,815	...
Chickasaw div.....	10,130	...	Chisholm div. (pt.).....	6,221	...	Holt-Cottontail div. (pt.).....	3,844	...
Chickasaw city.....	10,002	4,920	Fairview div. (pt.).....	979	...	Northport div. (pt.).....	5,740	...
Mobile div.....	202,779	...	Mitylene div. (pt.).....	1,002	...	Northport city.....	5,255	...
Mobile city.....	202,779	129,009	Montgomery div.....	134,393	...	Taylorville div. (pt.).....	3,289	...
Prichard div.....	47,431	...	Montgomery city.....	134,393	106,525	Tuscaloosa div.....	63,370	...
Prichard city.....	47,371	19,014	Pike Road div. (pt.).....	298	...	Tuscaloosa city.....	63,370	...
Saraland div. (pt.).....	6,867	...						
Saraland city.....	4,595	(2)						
Satsuma town.....	1,491	(2)						
Tanner-Williams div. (pt.).....	932	...						

<sup>1</sup> County returned in 1950 by election precincts; data by census county divisions not available.

<sup>2</sup> Incorporated since 1950.

<sup>3</sup> For the map and population of the entire Columbus (Ga.) Urbanized Area, see corresponding report for Georgia.

<sup>4</sup> There were no urbanized areas delineated for Gadsden, Huntsville, and Tuscaloosa for the 1950 Census.

Table 11.—POPULATION OF STANDARD METROPOLITAN STATISTICAL AREAS: 1960 AND 1950

[Data relate to areas as defined for 1960. Minus sign (-) denotes decrease]

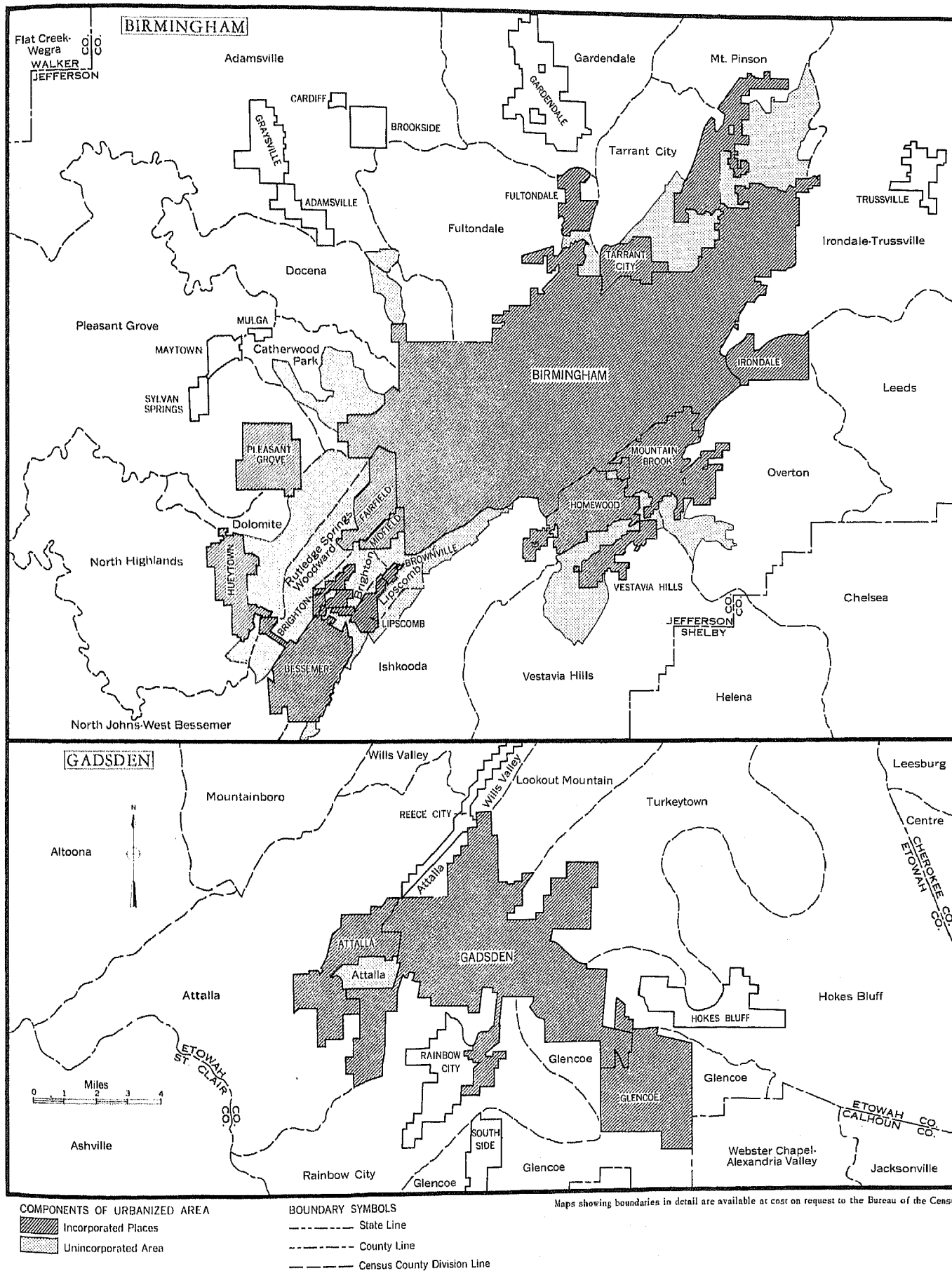
Standard metropolitan statistical area, central city, and other component areas	1960	1950	Increase		Standard metropolitan statistical area, central city, and other component areas	1960	1950	Increase	
			Number	Percent				Number	Percent
<b>BIRMINGHAM, ALA.</b> (Jefferson County)									
Total.....	634,864	558,928	75,936	13.6	Total.....	314,301	231,105	83,196	36.0
Birmingham city.....	340,887	326,037	14,850	4.6	Mobile city.....	202,779	129,009	73,770	57.2
Outside central city.....	293,977	232,891	61,086	26.2	Outside central city.....	111,522	102,096	9,426	9.2
<b>COLUMBUS, GA.-ALA.</b>									
That part in Alabama.....	46,351	40,364	5,987	14.8	<b>MONTGOMERY, ALA.</b> (Montgomery County)				
Russell County.....	46,351	40,364	5,987	14.8	Total.....	169,210	138,965	30,245	21.8
<b>GADSDEN, ALA.</b> (Etowah County)									
Total.....	96,980	93,892	3,088	3.3	Montgomery city.....	134,393	106,525	27,868	26.2
Gadsden city.....	58,088	55,725	2,363	4.2	Outside central city.....	34,817	32,440	2,377	7.3
Outside central city.....	38,892	38,167	725	1.9	<b>TUSCALOOSA, ALA.</b> (Tuscaloosa County)				
<b>HUNTSVILLE, ALA.</b> (Madison County)									
Total.....	117,348	72,903	44,445	61.0	Total.....	109,047	94,092	14,955	15.9
Huntsville city.....	72,365	16,437	55,928	340.3	Tuscaloosa city.....	63,370	46,396	16,974	36.6
Outside central city.....	44,983	56,466	-11,483	-20.3	Outside central city.....	45,677	47,696	-2,019	-4.2

Table 12.—POPULATION OF THE STATE AND OF STANDARD METROPOLITAN STATISTICAL AREAS, BY TYPE OF RESIDENCE: 1960

Metropolitan-nonmetropolitan residence	Total	Urban		Rural		
		Total	Central city or cities	Other urban territory	Total	Places of 1,000 to 2,500
The State.....	3,266,740	1,791,721	871,882	919,839	1,475,019	109,506
In standard metropolitan statistical areas.....	1,488,101	1,199,229	871,882	327,347	288,872	14,993
Birmingham, Ala.....	634,864	537,240	340,887	196,353	97,624	6,930
Columbus, Ga.-Ala. <sup>1</sup> .....	46,351	27,630	...	27,630	18,721	1,056
Gadsden, Ala.....	96,980	63,970	58,088	10,882	28,010	2,244
Huntsville, Ala.....	117,348	72,970	72,365	2,605	42,378	1,435
Mobile, Ala.....	314,301	270,711	202,779	67,932	43,990	1,913
Montgomery, Ala.....	163,210	142,893	134,393	8,500	26,317	...
Tuscaloosa, Ala.....	109,047	76,815	63,370	13,445	32,432	...
Not in standard metropolitan statistical areas.....	1,778,639	592,492	...	592,492	1,186,147	94,513

<sup>1</sup> Part in State only; for entire area see table 11 of the corresponding report for Georgia.

# URBANIZED AREAS—ALABAMA



URBANIZED AREAS—ALABAMA

